



— ProCompositeTech —



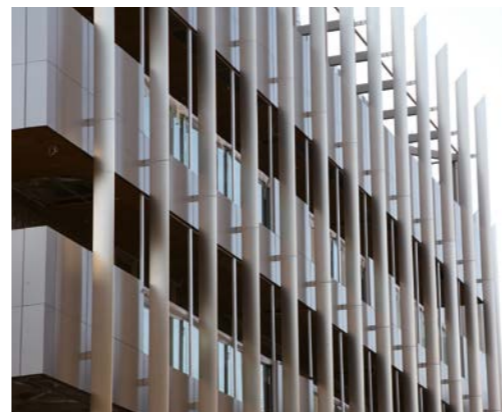
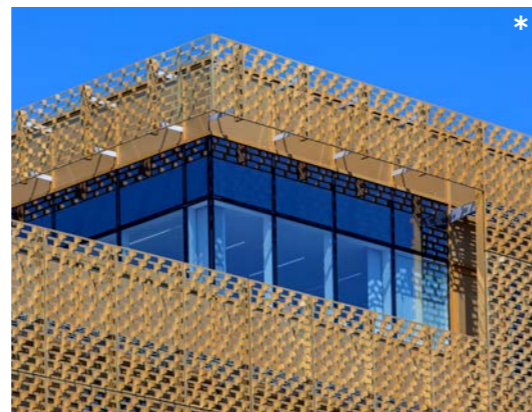
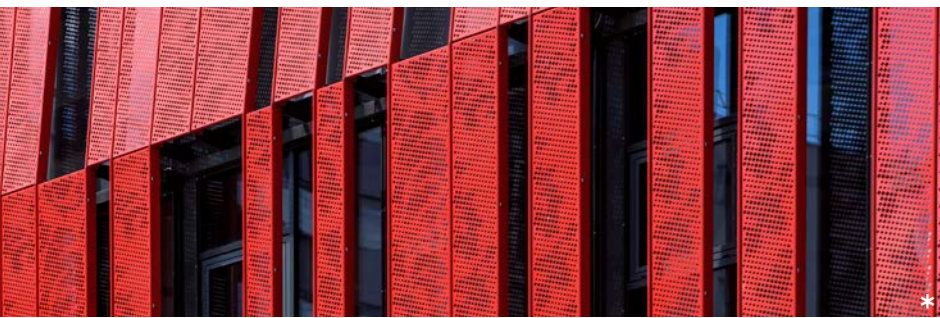
Alu Ranger oneR

CNC Panel Router with Vertical Table

| 4221 | 6321

CNC panel router with **Vertical Table** for architectural facades panels processing

CNC panel router with vertical table: ACM/ACP, ACM Mineral core, panel router with alu honeycomb core, and corrugated core, Fibrecement, HPL...



* Ph. Fatih Kucukcolak

COMPATIBLE PANELS

ACM / ACP PE CORE MINERAL CORE

ALUCOBOND®
LARSON®
ALPOLIC®
ARCONIC®
ALUBOND®
ALBOND®
SIBALUX®
VITRABOND®
STACBOND®
ALUPANEL®
.....

SOLID ALU

VITRADUAL®
LUXE COAT®
ALUCOLUX®
.....

ALU HONEYCOMB CORE

ALUCORE®
LARCORE®
PLASCORE®
STARCELL®
CEL COMPONENTS®
HONYLITE®
.....

ALU CORRUGATED CORE

METAWELL®
DOLUFLEX®
.....

FIBERCEMENT

CEMBRIT®
EQUITONE by ETERNIT®
COPANEL®
SWISS PEARL®
.....

HPL

TRESPA®
MAX EXTERIOR®
POLYREY®
RESOPAL®
FUNDERMAX®
.....

I AM ALU RANGER

60% less...

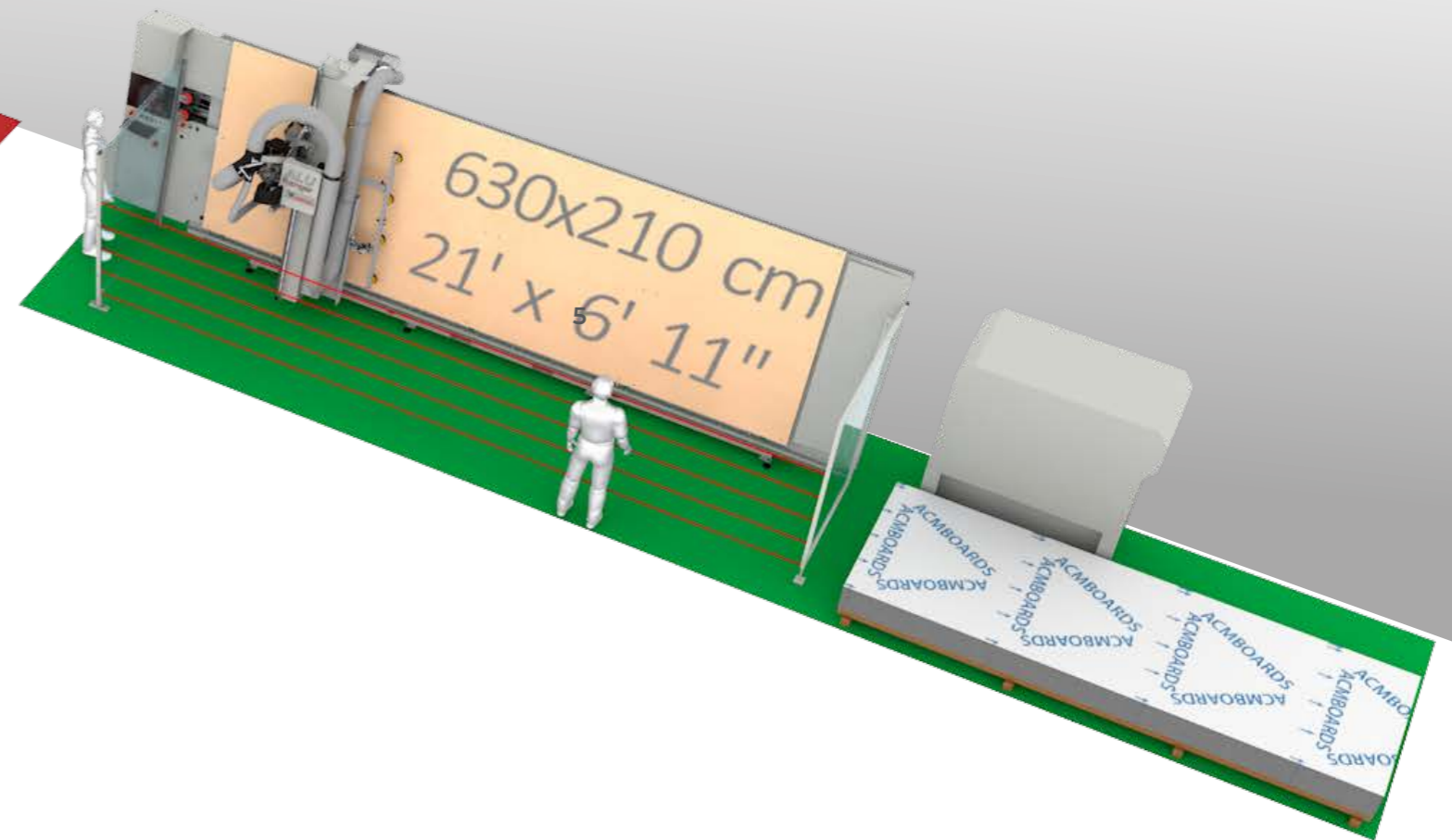
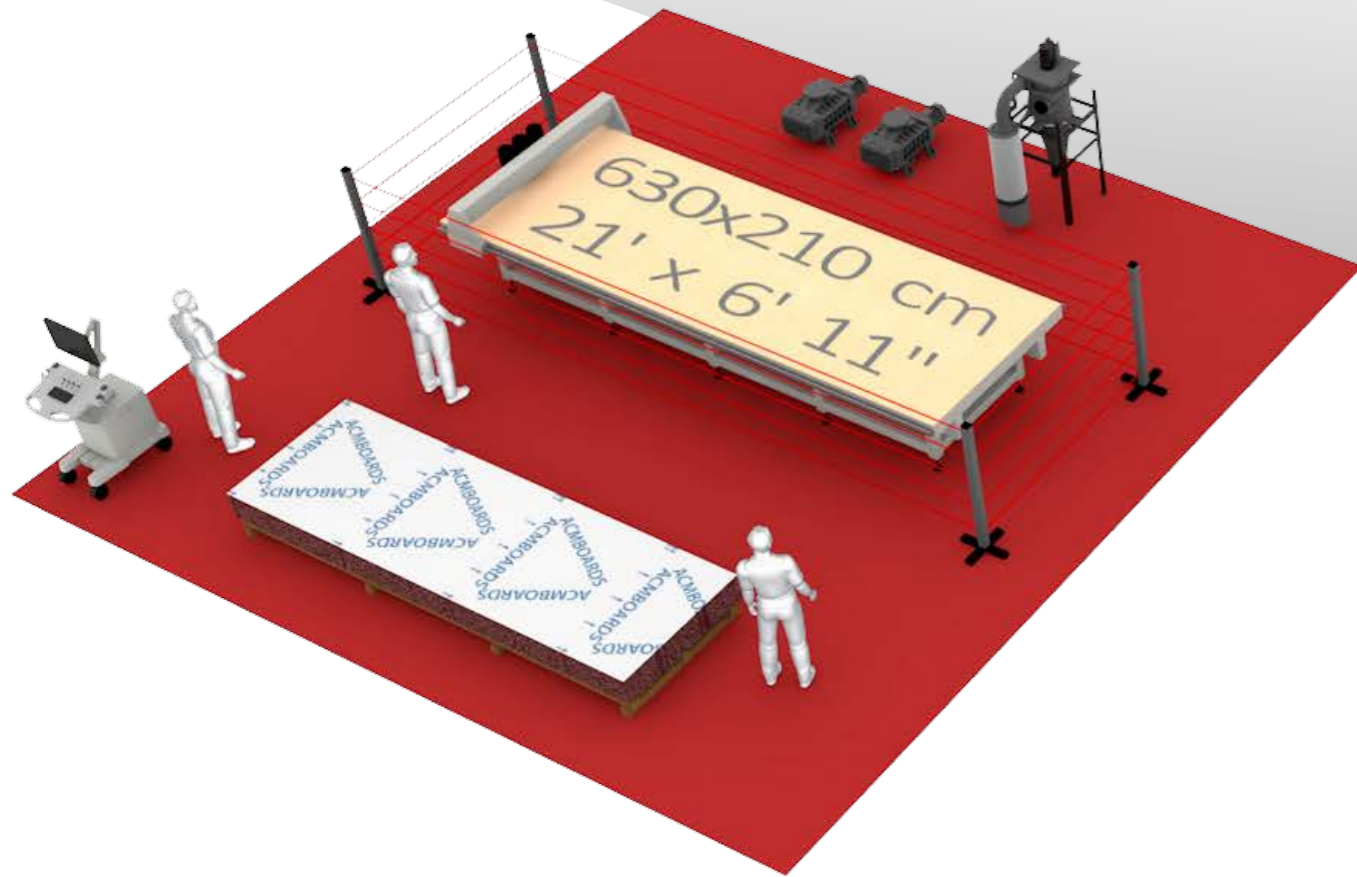
...floor space required than a horizontal router system

Designed to occupy less space

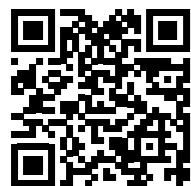
Ergonomic access to the Vertical Table

Safer work environment for the operator

Eliminate table prep, debris not held falls to the floor



CNC PANEL ROUTER
WITH HORIZONTAL TABLE



LAYOUT

121 sq mt - (1302 sq ft)

WORKING
TABLE

14 sq mt - (151 sq ft)

LAYOUT

49 sq mt - (527 sq ft)

WORKING
TABLE

14 sq mt - (151 sq ft)

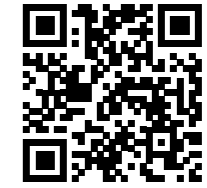
CNC PANEL ROUTER
WITH VERTICAL TABLE

oneR
6321

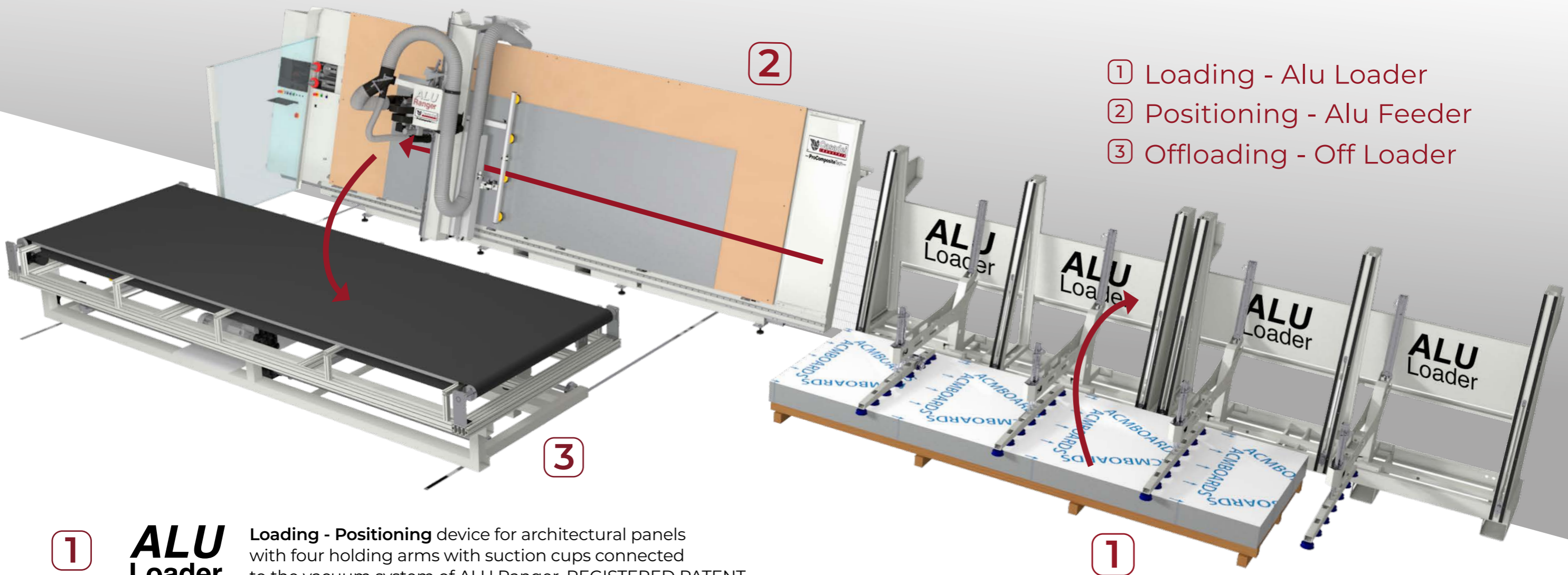
I AM VERTICAL, NO WASTED SPACE

Integrated automation

- Automatic loading and positioning without operators
- Increased productivity
- Zero risk of panels falling with patented holding device
- Ergonomically designed for easy panel off-loading



I LOAD AND OFFLOAD PANELS ALL ALONE

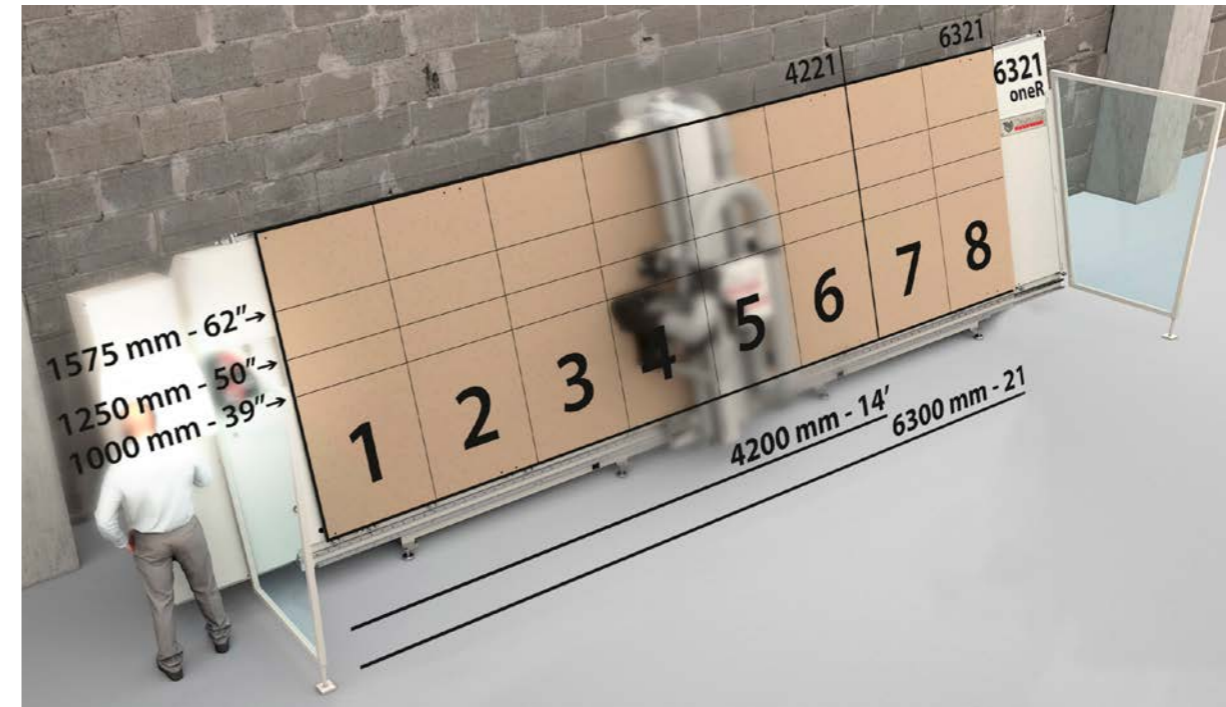
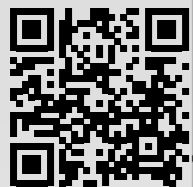


- ① Loading - Alu Loader
- ② Positioning - Alu Feeder
- ③ Offloading - Off Loader

- ① **ALU Loader** Loading - Positioning device for architectural panels with four holding arms with suction cups connected to the vacuum system of ALU Ranger. REGISTERED PATENT
- ② **ALU Ranger** CNC Panel Router with Vertical Table for architectural facades panels fabrication
- ③ **OFF Loader** Automatic Off Loader for processed panels by a tiltable vacuum holding table PATENT PENDING

Panel Vacuum Holding

- Vacuum zones designed for standard ACM panels
- Easy Release for processed panels (patent pending)
- No risk of panels falling during off-loading
- Vacuum pumps integrated inside the machine frame: less space required and reduced noise
- Possibility of resuming work on panels that have not been unloaded without losing the references



- Vacuum panel holding with MDF sacrificial board.
- Automatic vacuum zone selection by control panel (6, 8, 12 zones).
- Manual vacuum zone selection (24, 32, 48 zones) as per ACM panel height (1,000; 1,250; 1,575; 2,050 mm - 39"; 50"; 62"; 80").



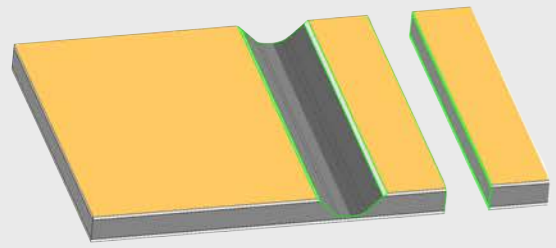
- Dry vacuum pumps (Made in Germany)
- 4221 oneR PRO 1x250m³/h pump Std
- 6321 oneR PRO 2x250m³/h pump Std

I HAVE A STRONG HOLD

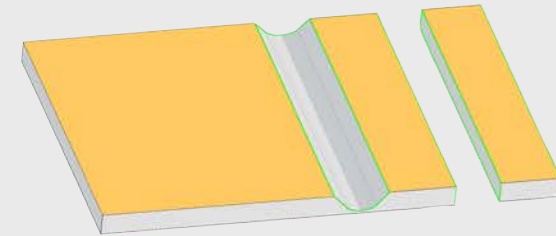
MATERIAL

VGroove
with
flute tool

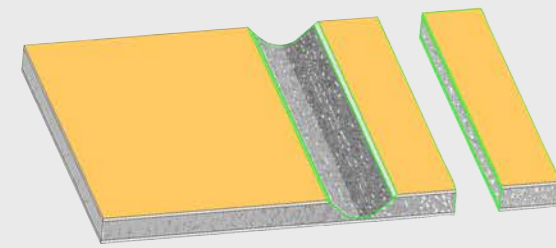
Flute
tool
route



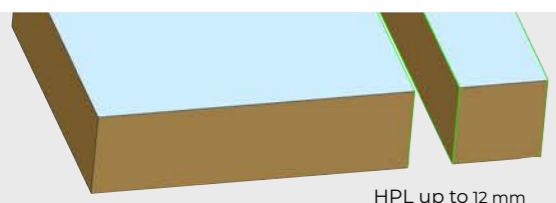
ACM CORE PE + FR



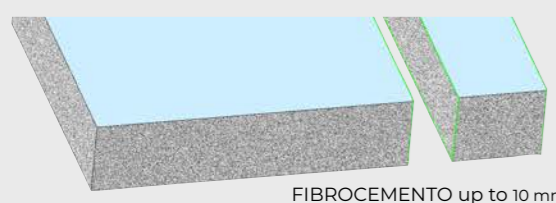
SOLID ALU



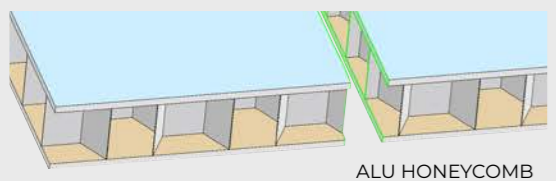
MINERAL CORE ACM



HPL up to 12 mm



FIBROCEMENTO up to 10 mm



ALU HONEYCOMB

FLUTE TOOL



Ø 4 mm Ø 6 mm Ø 10 mm
WIDIA WIDIA VGROOVE WIDIA
WITH SUPERIOR COATING

*processing speed:
up to 16 mt/1'-630 IPM (PE + FR core)
up to 5 mt/1'-196 IPM (Solid Alu)



MADE BY LEITZ

Ø 6 mm Ø 10 mm
DIAMOND VGROOVE DIAMOND

*processing speed:
up to 6 mt/1'-236 IPM (ACM Mineral Core)

* Indicative speeds for an optimal quality/duration ratio

*processing speed:
up to 6 mt/1'-236 IPM

*processing speed:
up to 6 mt/1'-236 IPM

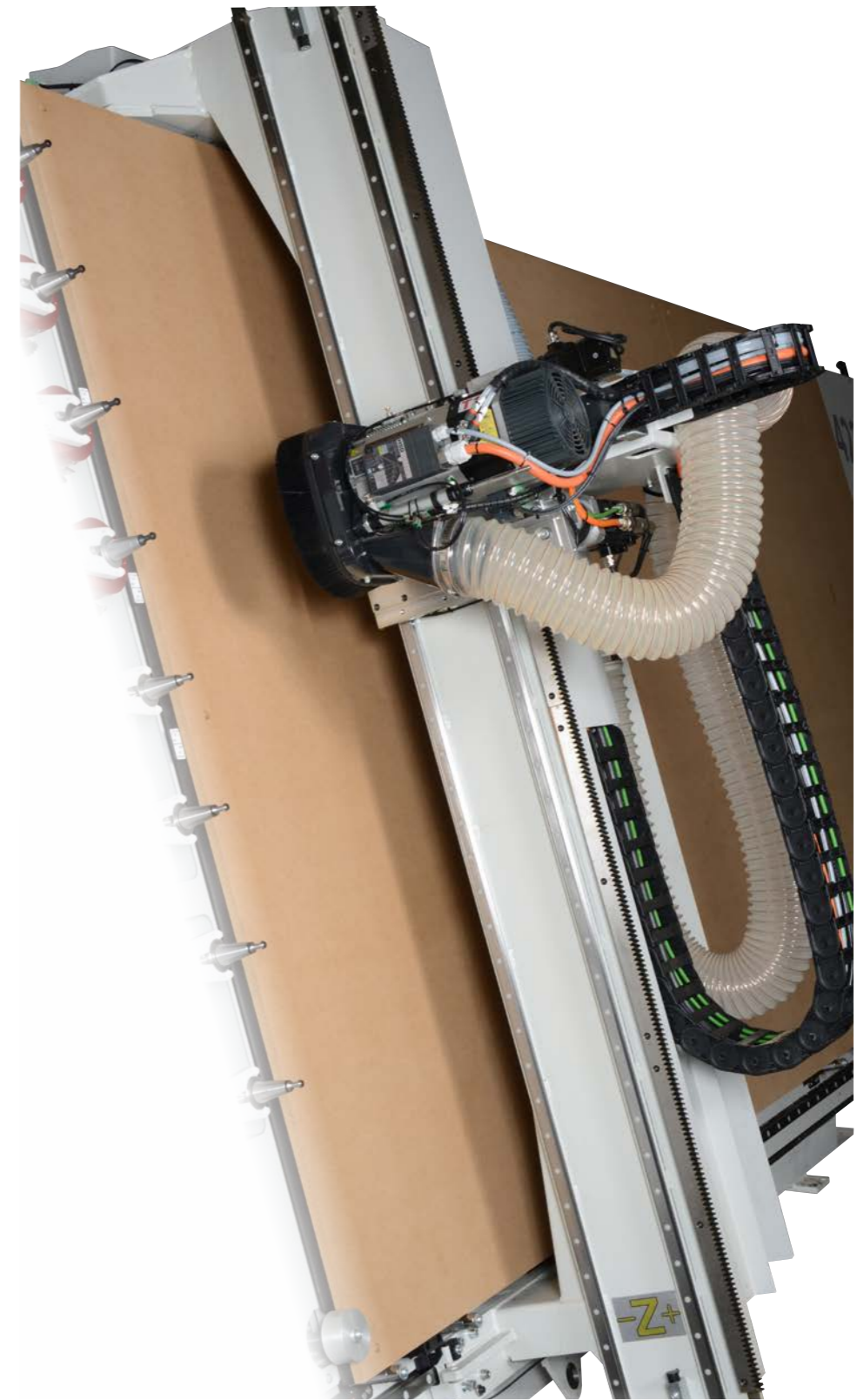


MADE BY LEITZ

Ø 8 mm
DIAMOND

*processing speed:
up to 10 mt/1'-393 IPM

IPM= INCHES PER MINUTE



R8A ELECTROSPINDLE FOR FLUTE TOOLS

- High-efficiency electrospindle
- High-resistance ceramic bearings
- Power 8 kW - up to 24000 RPM - Electroventilated
- Integrated dust collection hood
- Tool changer (flute tools) 8 positions ISO 30 Cones - Collet ER32

I HAVE MY HEAD IN PLACE



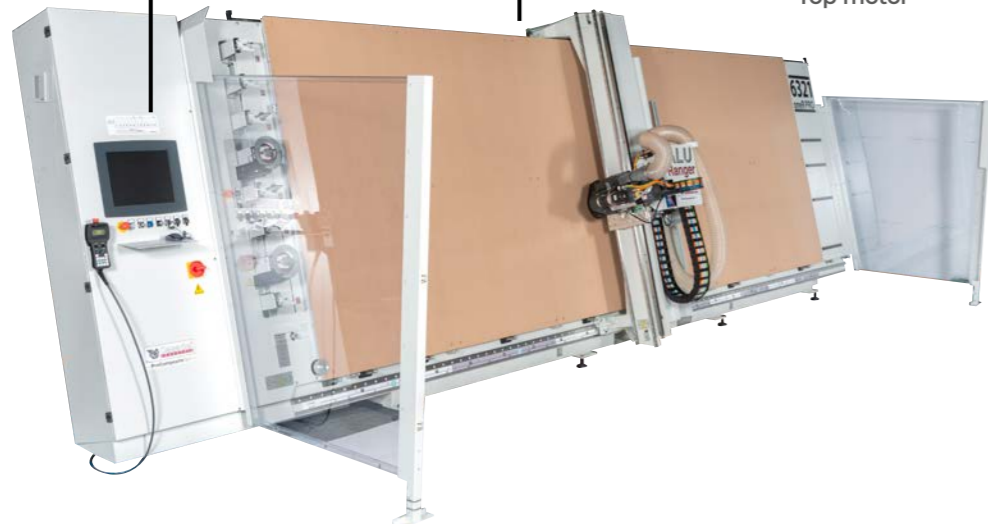
The Vertical way

- Table flatness is guaranteed by machining the frame vertically
- The robust vertical design absorbs more vibration which results in less chatter marks during processing that will extend tool life
- Operator's safety is increased by side protection barriers and a safety light curtain



Top motor

Electrical box and control panel integrated into machine frame



I WAS MADE THIS WAY...



Hand-held remote control (Opt)

- 4 lines and 16 characters
- Axis manual control "JOG"
- Speed control "Override"



Automatic presetter for tool length

- Fully automatic
- Measurement tolerance $\pm 0.02 \text{ mm} \pm 0.0007 \text{ In}$



Industrial numerical control

- Up to 7 axis controlled (X,Y,Z interpolating)
- 17" LCD colour monitor
- Ethernet connection, USB, mouse



Automatic lubrication for linear guides



Automatic lubrication for tools (Opt.)



Electrical cabinet

- Fully compliant with CE and UL/CSA Norms
- Main components Made in Japan and Germany
- Fully accessible and electrical disturbs free



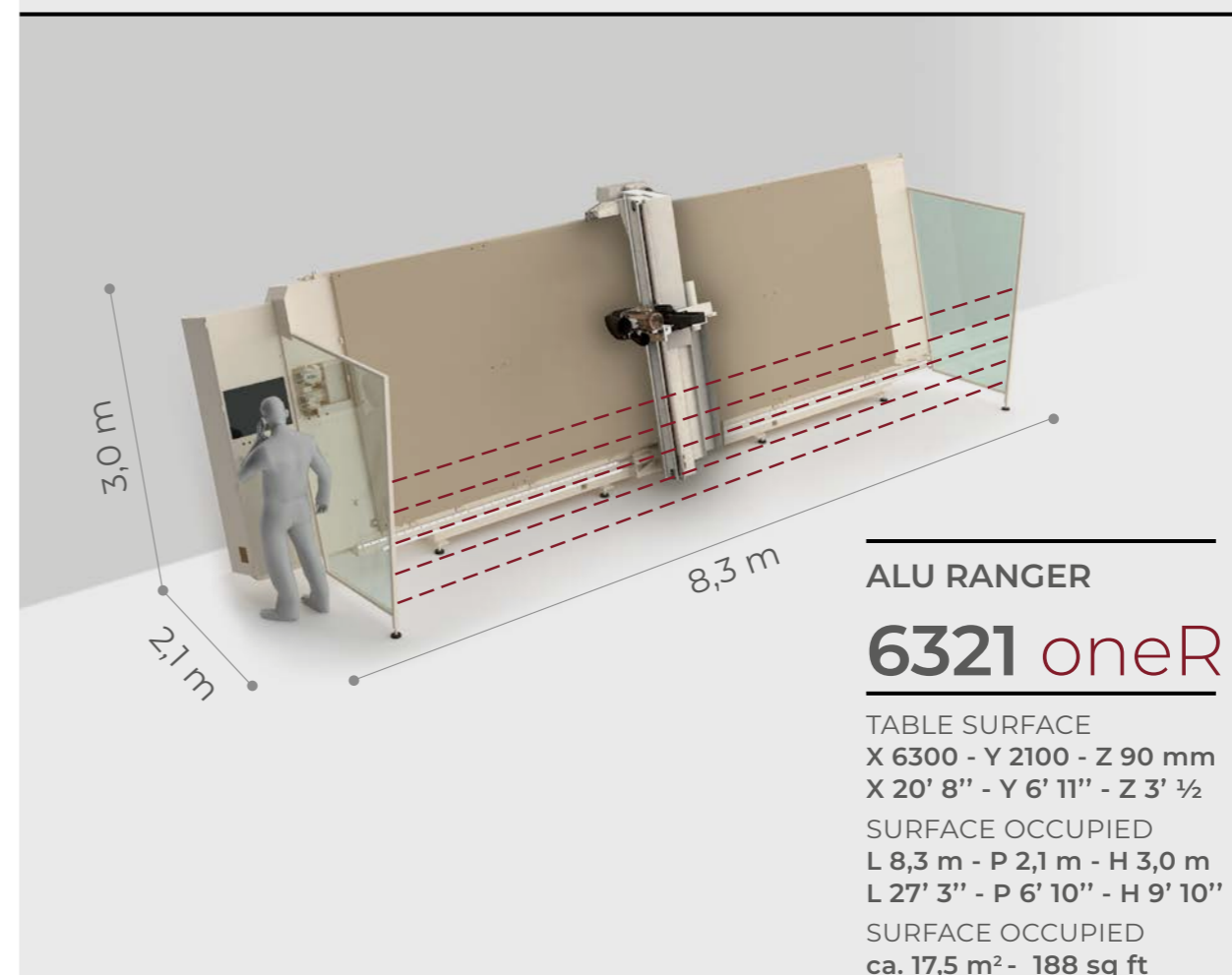
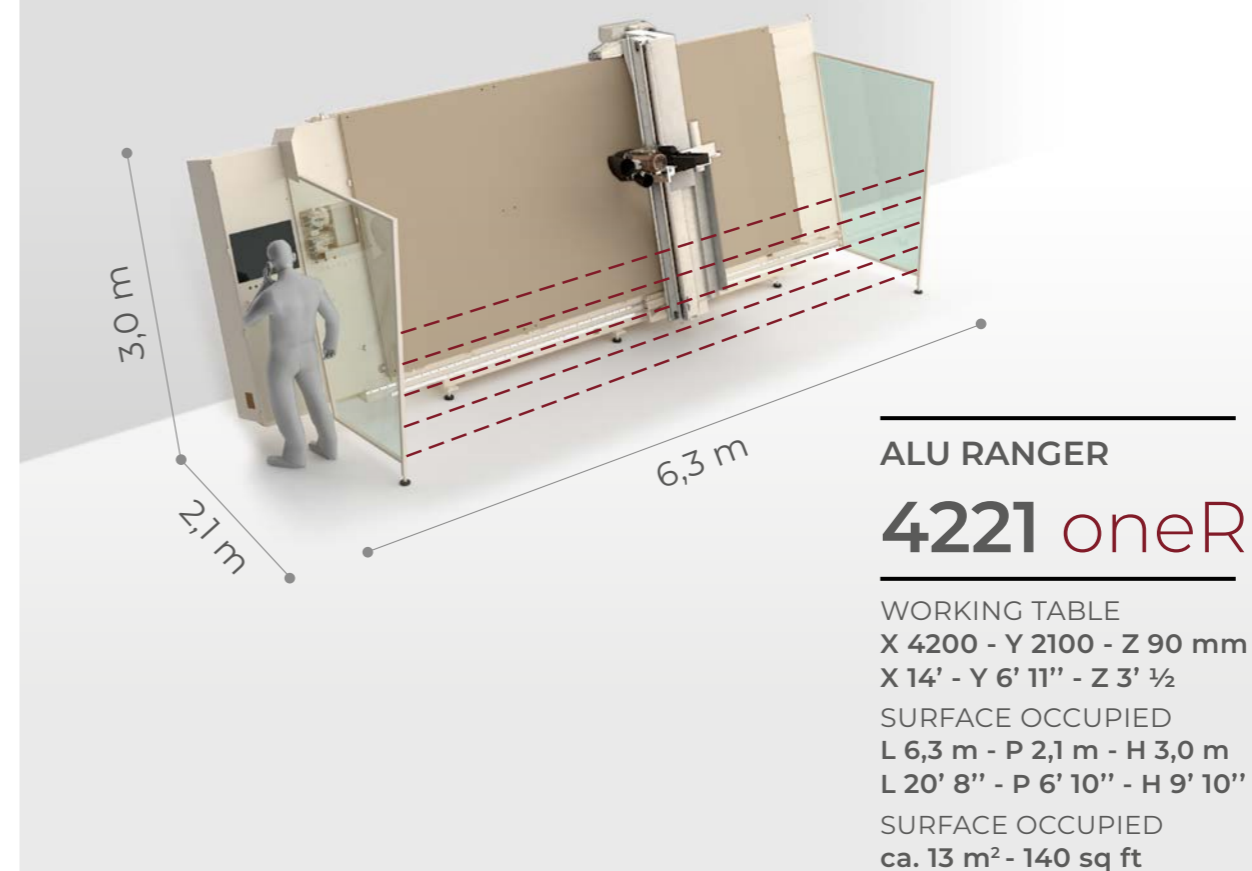
Origin pop-up stops

- Bearing for easy panel sliding
- Pneumatic control with safety sensor connected to PLC

... AND I DO NOT MISS ANYTHIN

TECHNICAL FEATURES

	ALU RANGER oneR 4221	ALU RANGER oneR 6321
Working table (mm)	X 4200 - Y 2100 - Z 90	X 6300 - Y 2100 - Z 90
Working table (imperial)	X 14' - Y 6' 11" - Z 3' ½	X 20' 8" - Y 6' 11" - Z 3' ½
Panel holding, vacuum by working table with MDF sacrificial board (selection by PLC)	6 zones AUTO	8 zones AUTO
Panel holding vacuum by zones combinations with manual activation (1000, 1250, 1575 mm) (39" - 50" - 62")	24	32
Vacuum pump	1 x 250 m ³ /h 1 x 147 Cfm	2 x 250 m ³ /h 2 x 147 Cfm
Axis speed (Rapid)	X 30 - Y 30 - Z 10 mt/min X 1181 - Y 1181 - 394 IPM	
Electrospindle R8A	8 Kw - collet ER32 up to 24000 g/min	
Automatic tool changer - working table side	8 positions - cones ISO30 - cone sensor	
Total power	ca. 17 KW	ca. 22 KW
Max weight of panel under process	ca. 250 Kg ca. 550 Lb	ca. 350 Kg ca. 772 Lb
Total weight	ca. 2700 Kg ca. 5952 Lb	ca. 3600 Kg ca. 7930 Lb





— **ProComposite**Tech —

www.composite.casadei-industria.com

Casadei Industria ALU S.r.l.

via Tane di Baragone, 11

47899 Galazzano Serravalle Repubblica di San Marino

Tel. +378 0549 900720