



Pre-cage assembling machine

Pratica 240

Pre-cage assembling machine



MIEP
the history of innovation



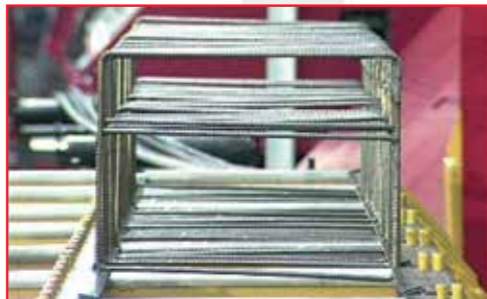
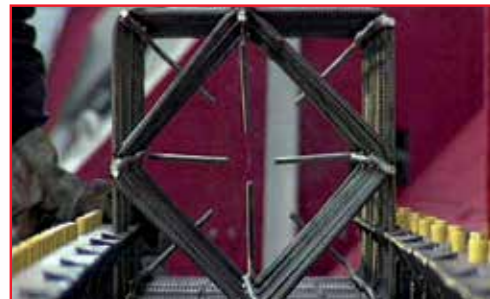
www.mepgroup.com



Pratica 240

SIMPLY PRATICA

PRATICA 240 is the **universal assembly machine** (patented system) designed to assist in production of **finished cage products**. Cages of all shapes and sizes can be made, **reducing assembly times**, and improving the **quality product** when compared to traditional methods.



VERSATILITY

Stirrups of different shapes, sizes and diameters, tied or welded, can be used in the cages, depending on design requirements.

Single simple solutions

The operator proceeds quickly with the welding or tying operations, accessing to all the points with precision, facilitated by the stability of the stirrups and by the alignment of the longitudinal bars. The cage is completed in safety.



EASY SET-UP AND FAST OPERATION

The operator inserts and fixes the stirrups with a fixed or variable pitch, inside the universal grooved guide.



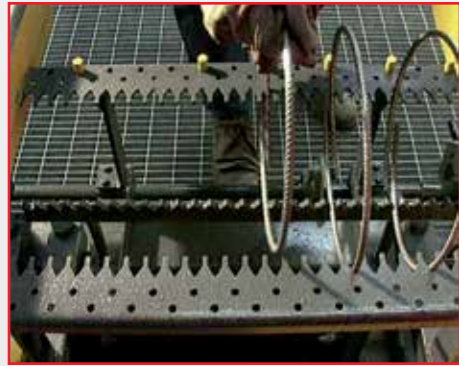
The lifting device allows the insertion and the support of the longitudinal bars or shapes at the height required, eliminating the need for a second operator. Intermediate heights can be obtained easily by means of a meter rule showing the heights.



COST REDUCTION

Thanks to PRATICA 240 it is possible to produce in a smaller space than conventional systems by requiring a less number of workers.

MASS-PRODUCTION

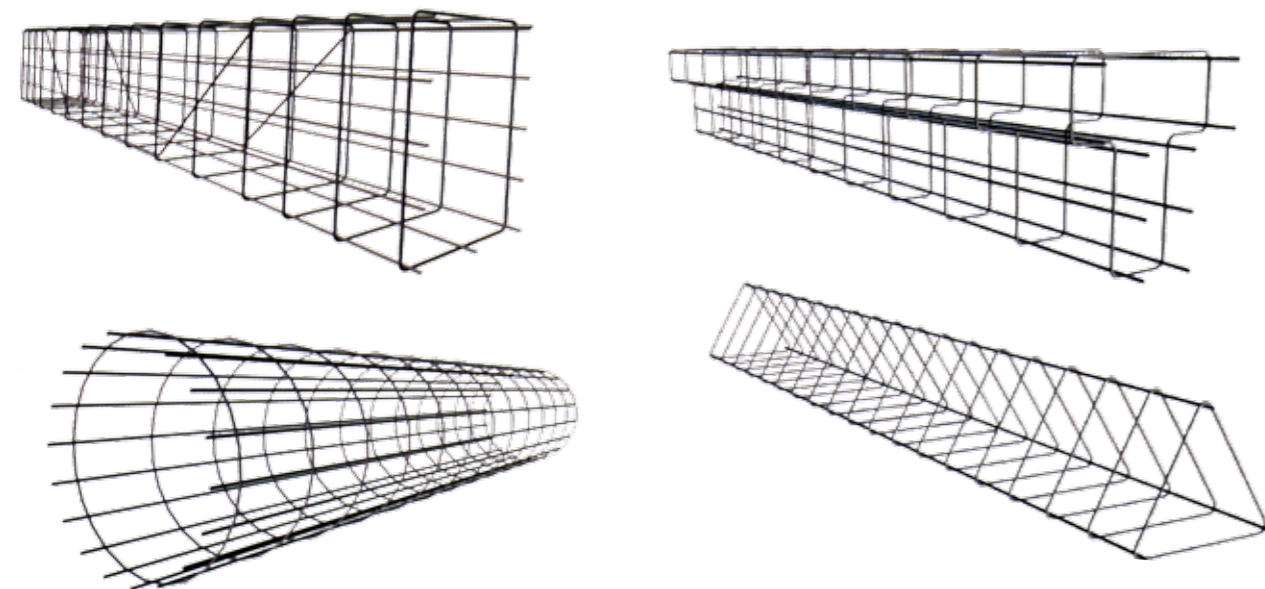


Identical cages can be produced **without changes to the set-up**. Reference pegs allow the operator to **place the stirrups quickly** in the required position.

MINIMUM STRAIN, MAXIMUM SAFETY



The positioning of the stirrups allows **the operator to build cages in absolute safety**, while preventing the excessive **strain caused by lifting and supporting longitudinal bars**.



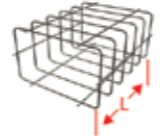







ACCESSORIES



- Extension for support of cages up to 2400 mm in width. (OPTIONAL)
- Additional welding trolley. (OPTIONAL)

TECHNICAL AND PRODUCTION CHARACTERISTICS

			
	CAGE SIZE		
	minimum (other sizes on request)	140 x 140 x 14000 mm	5.5"x5.5"x 45-11"
	maximum (other sizes on request)	2400 x 1000 x 14000 mm	7' 10-1/2"x39-3/8"x 45-11"
	REBAR DIAMETER		
		from Ø 4 to Ø 16 mm	from #2 to #5 mm
	STIRRUP SPACING		
	minimum	25 mm	1"
	DIAMETER OF THE LONGITUDINAL BARS		
		from Ø 4 to Ø 40 mm	from #2 to #11 mm
	MAXIMUM ALLOWED STIRRUP WEIGHT		
	Version for cages up to 9 m	780 kg	1720 lb
	Version for cages up to 12 m	1100 kg	2425 lb
	Version for cages up to 14 m	1240 kg	2733 lb
	MAXIMUM WEIGHT OF LONGITUDINAL BARS		
	Version for cages up to 9 m distributed along the length of the blades	1100 kg	2425 lb
	Version for cages up to 12 m distributed along the length of the blades	1300 kg	2866 lb
	Version for cages up to 14 m distributed along the length of the blades	1550 Kg	3418 lb

Note: #2 = 1/4" ; #5 = 5/8" ; #11 = 1-3/8"

MEP

MEP Macchine Elettroniche Piegatrici
via Leonardo Da Vinci, 20
I - 33010 Reana del Roiale (UD) - ITALY
Tel. +39 0432 851455
Fax +39 0432 880140

MEP
ASIA

MEP Asia Co., Ltd.
1303 Ho, 301-Dong, Bucheon Techno Park
345 Sukcheon Ro, Ojung-Gu
Bucheon, Gyunggi-Do - SOUTH KOREA
Tel. +82 32 329 1956
Fax +82 32 329 1957

MEP
BRASIL

MEP Brasil Ltda.
COM. E SERV.DE MAQS.
Rodovia Sp-79, S/N Km 122 Bloco B
18170-000 - Liberdade - Piedade - Sp
Tel. + 55 11 2248-9800
Fax + 55 11 2248-9800

MEP
FRANCE

MEP France S.A.
8 bis, rue des Oziers
BP 40796 Zone d'Activités du Vert Galant
95004 St. Ouen L'Aumône FRANCE
Tel. +33 1 34300676
Fax +33 1 34300672

MEP
NORD SERVICE

MEP Nord Service GmbH
Gewerbepark, 3
6068 Mils AUSTRIA
Tel. +43 664-88732022

MEP
NORTH AMERICA

MEP North America
6020 NW 99th Ave
Suite No. 314
Doral, FL 33178
Tel. +1 786 953 4986

MEP
POLSKA

MEP Polska Sp. z o.o.
ul. Józefowska 13/A
93-338 Łódź POLAND
Tel. +48 42 645 7225
Fax +48 42 645 7058

MEP
VOSTOK

MEP Vostok OOO
ul. Yasenevaya, 10, korp.1 kv.1
pos. Sosenskoe, der. Sosenki
142791 Mosca, RUSSIA
Tel./Fax: +7 495 745 04 90

www.mepgroup.com

sales@mepgroup.com