



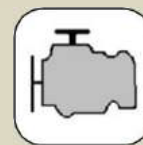
Technical Data

Specification & Capacities

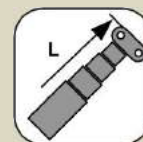


SPX536CDH-2

S.N:



18,5kW/25,0Hp



3,4-12,1m



3600kg



EN 13000

[m] [kg]



SPX536CDH-2



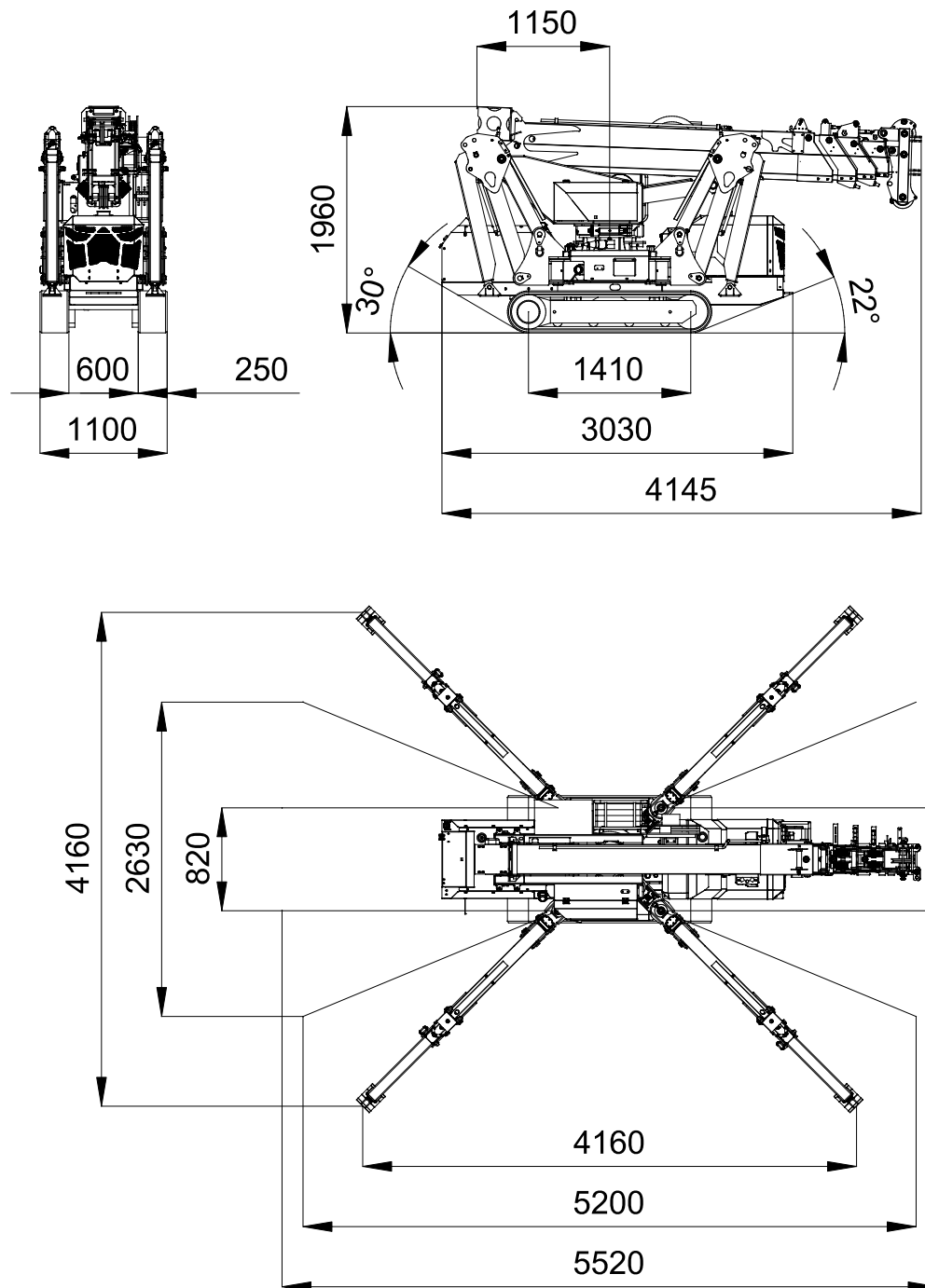
SPX536CDH-2














Via Campardone, 1
31014 Colle Umberto – Italy
Tel. +39 0438 1710083
Mail: info@jekko.it
Web: www.jekko.it

Date	Apr. 5 th 2019
REV.	3

SPX536CDH-2 - OVERALL DIMENSIONS








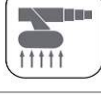


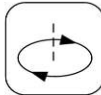



WEIGHTS		Name / version	kg ¹
		CDH-2	3600
		CDH-2	0
		W900.125	58
		SINGLE FALL	24,5
		MULTIPLE FALL	60
		POWERPACK	40
		800G	26
		600.2H (w ME-01)	210 (215)
		MR800 (w QC)	295 (340)
		301GR (w QC)	200 (245)
		HA-SPX527	45
		OM400	17
	WUK-03	2	

¹: Dry weight

²: Engine working limit

³: Static lifting

ENGINE		KUBOTA D1105-E3B		
		18,5kW 25HP		
		DIESEL		
		L	20	
HYDRAULIC		ISO 6743-4:HFDU with VG46 viscosity class		
		Working temp	<70°C	
		L	55	
MOVEMENTS		km/h	2,0	
		25° (47%) ²		
		kg/cm ²	0,53	
		kg	2700 ³	
		-2°/80°		
		s	35	
		360°		
		rpm	1,0	
		m	3,4 - 12,1	
	s	40		

HOIST PERFORMANCE	Winch	Layer	Max line pull	Standard rope speed	Highest rope speed
			kg	m/min	m/min
		1	1371 ¹	34,4	N/A
		2	1257 ¹	37,5	N/A
		3	1161 ¹	40,6	N/A
	Rope	Wire rope	Ø	Total lenght	Max load
			mm	m	kg
		19x7 right lang lay Non rotating	8	60	5435
	Hook block	Load	N° of		Block type
		kg	Sheaves	Lines	
		3600	2	4	Multiple fall block
		2700	2	3	
		1800	1	2	
		900	-	1	Single fall block

¹:LMI limited at 900 kg

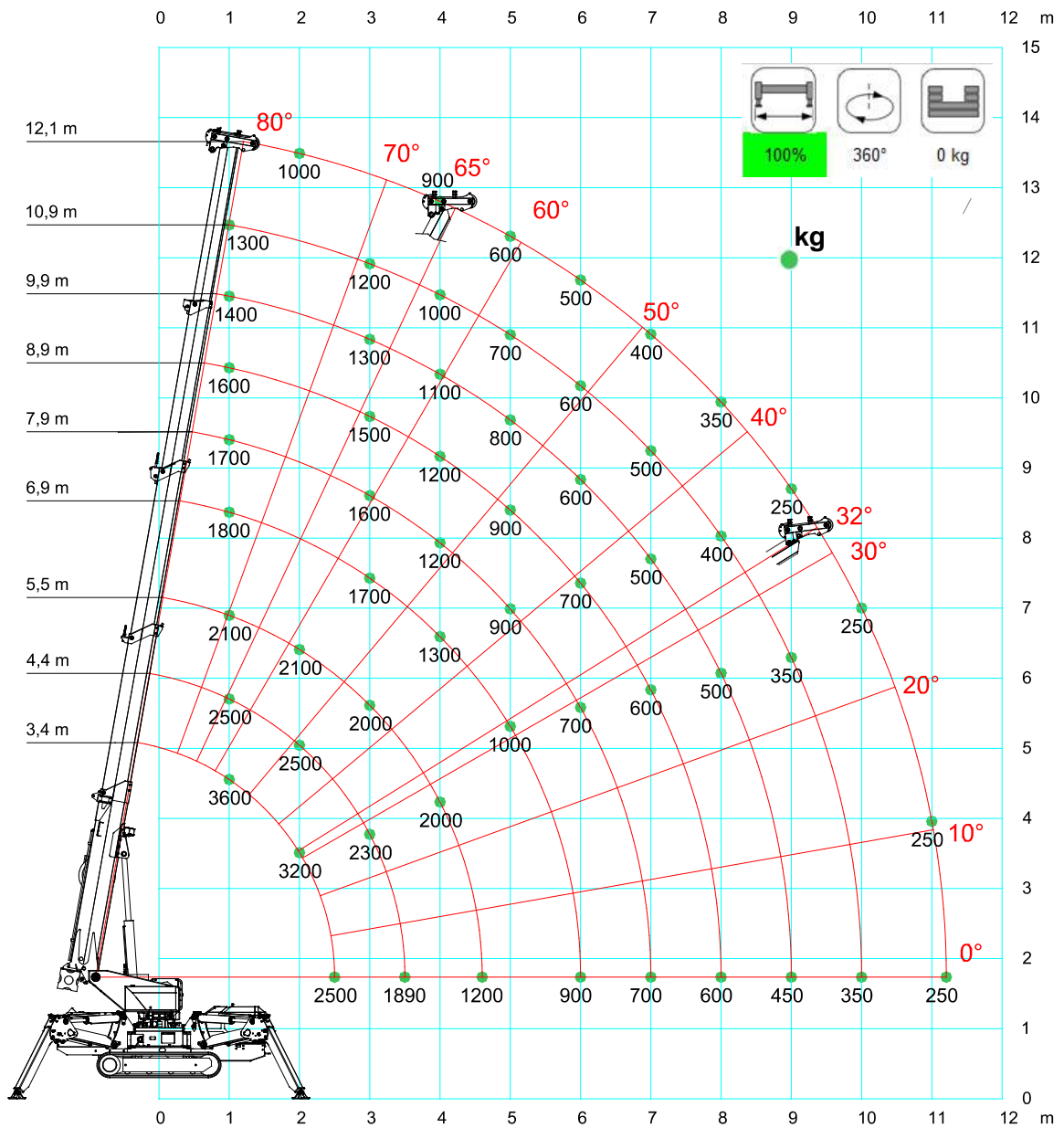


SPX536CDH-2



SPX536CDH-2

SPX536CDH-2 – MAIN BOOM



[m] [kg]														
	MAIN BOOM	100%	360°	0kg	3,4	4,4	5,5	6,2	6,9	7,9	8,9	9,9	10,9	12,1
1,0	3600*	2500	2100	1900	1800	1700	1600	1600	1400	1300	1000			
1,8	3600*	2500	2100	1900	1700	1600	1600	1600	1400	1300	1000			
2,1	3200*	2400	2100	1900	1700	1600	1600	1600	1400	1300	1000			
2,3	3000*	2400	2100	1900	1700	1600	1600	1600	1400	1300	1000			
2,4	2500	2300	2100	1900	1700	1600	1600	1600	1400	1300	1000			
2,5	2500	2300	2000	1800	1700	1600	1500	1400	1400	1300	1000			
3,0		2300	2000	1800	1700	1600	1500	1300	1300	1200	1000			
4,0			1300	1300	1300	1200	1200	1100	1100	1000	900			
4,6			1200	1100	1100	1100	1100	1100	1000	900	700			
5,0				1000	1000	900	900	800	800	700	600			
6,0					900	700	700	600	600	600	500			
7,0						700	600	600	500	500	400			
8,0							600	500	500	400	350			
9,0								450	350	350	250			
10,0										350	250			
11,2														250

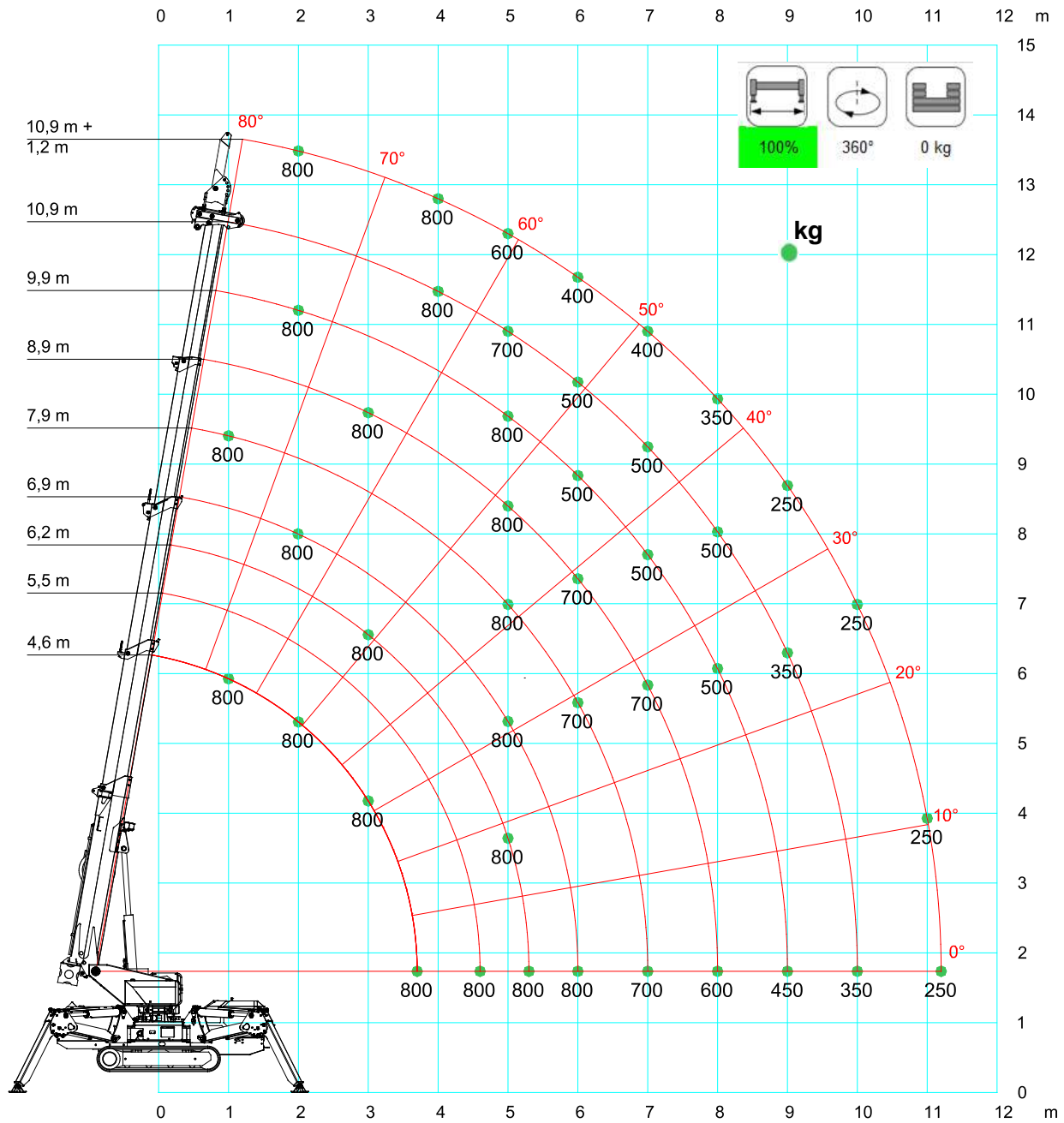
LC527_V306_0418_MAIN_BOOM_STAB_100

*Lifting capacity with boom head setted to 0°. For different angles lifting capacity is reduced to 2700 kg

[m] [kg]		>0km/h icon"/>				
	MAIN BOOM	>0km/h	180°	0kg		
	3,4	4,4	5,5			
1,0	300	250	200			
2,0	500	300	200			
2,5	400	250	200			
3,0		200	200			

LC527_V302_1016_MAIN_BOOM_CINGOLI

SPX536CDH-2 + JIB800G



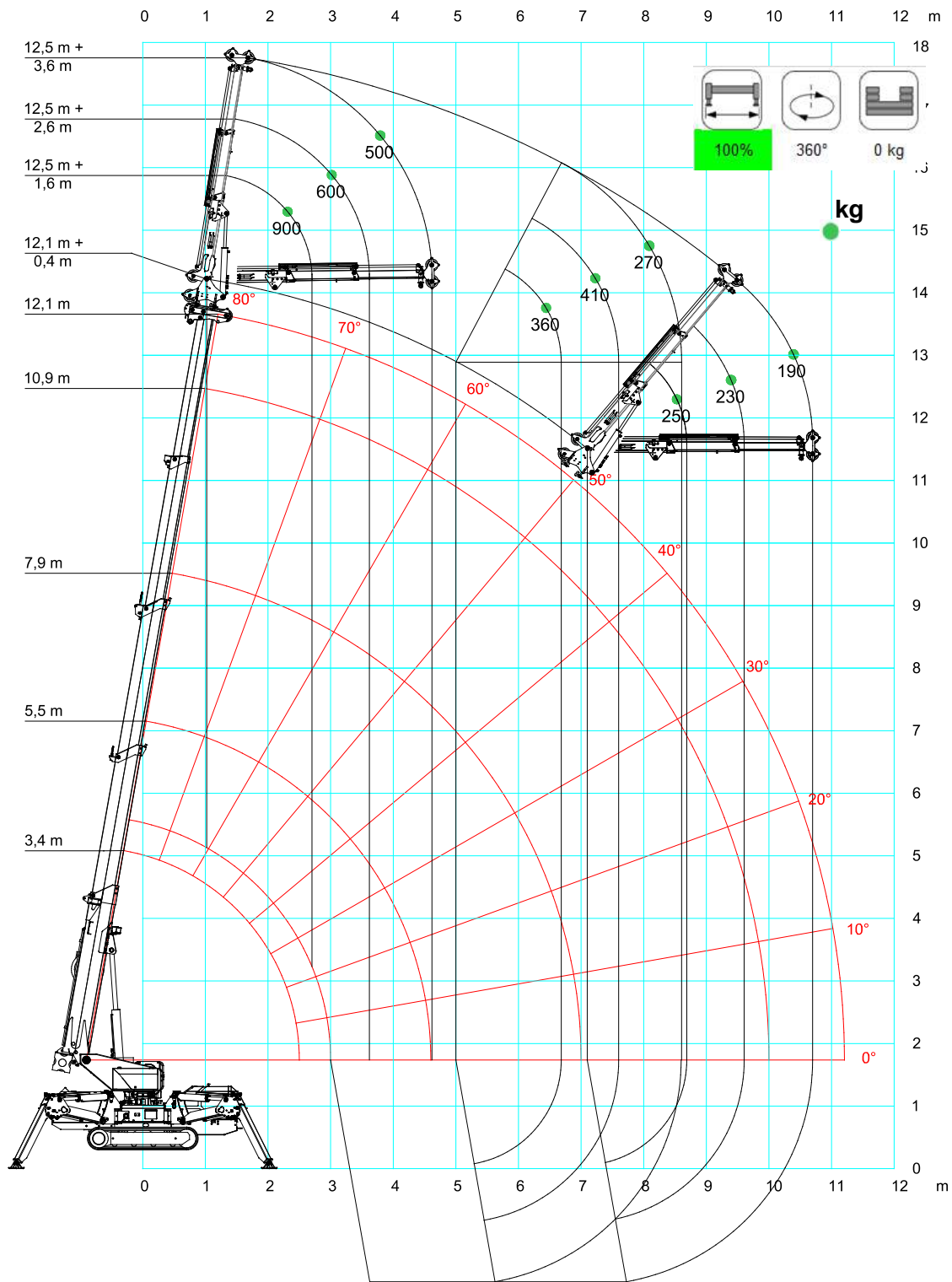
[m] \ [kg]	JIB800G	100%	360°	0 kg	EN				
	4,6	5,5	6,2	6,9	7,9	8,9	9,9	10,9	12,1
1,0	800	800	800	800	800	800	800	800	
2,0	800	800	800	800	800	800	800	800	800
2,5	800	800	800	800	800	800	800	800	800
3,0	800	800	800	800	800	800	800	800	800
4,0		800	800	800	800	800	800	800	800
4,6		800	800	800	800	800	800	800	700
5,0			800	800	800	800	800	700	600
6,0				800	700	700	600	600	500
7,0					700	700	500	500	400
8,0						600	500	500	350
9,0							450	350	250
10,0								350	250
11,2									250

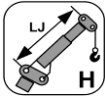
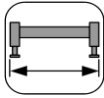
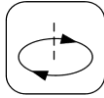
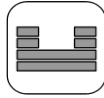

LC527_V302_1016_JIB800G_STAB_100

[m] \ [kg]	JIB800G	>0km/h icon"/> >0km/h	0°-180°	0 kg	EN
	4,6	5,0			
1,0	200	100			
3,9	200	100			


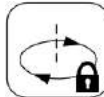
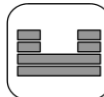

LC527_V302_1016_JIB800G_CINGOLI

SPX536CDH-2 + JIB600.2H



[m] \ [kg]	 JIB600.2H	 100%	 360°	 0kg	 EN
	1,6	2,1	2,6	3,1	3,6
1,0	900	600	600	520	500
2,0	900	600	600	520	500
3,0	900	600	600	520	450
4,0	600	550	470	420	380
5,0	360	330	310	290	270
6,0	250	240	230	210	190
7,1	250	240	230	210	190

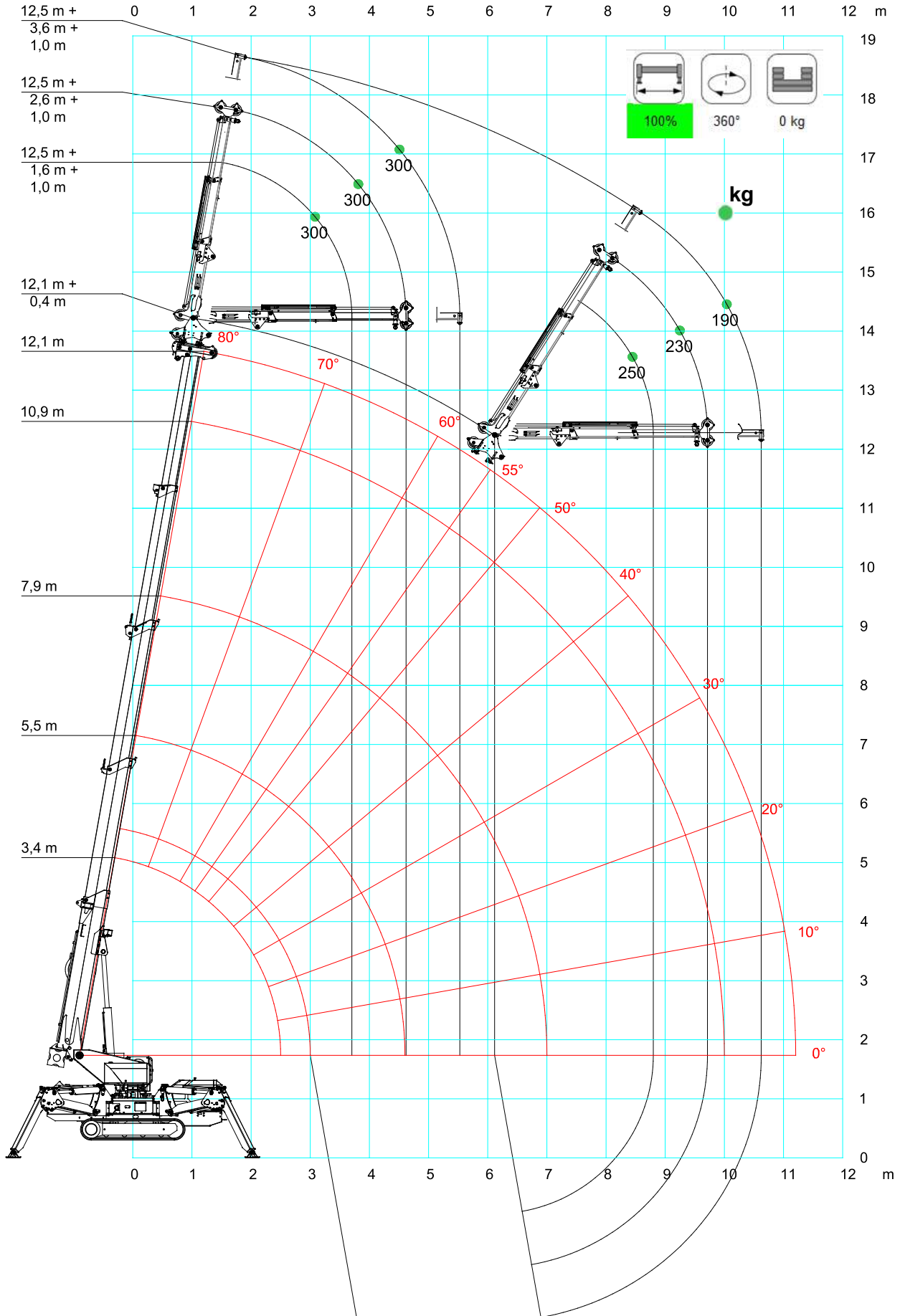
LC527_V306_0418_JIB600H_STAB_100


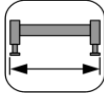
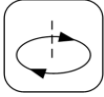


[m] \ [kg]	 JIB600.2H	>0km/h icon" data-bbox="421 502 486 545"/> >0km/h	 0°-180°	 0kg	 EN
	1,6	1,8			
2,0	200	100			
3,2	200	100			

LC527_V302_1016_JIB600H_CINGOLI





The first column refers to the distance of the jib centre of rotation from 0 on x axis.

SPX536CDH-2 + JIB600.2H+Stinger



[m] \ [kg]	 JIB600.2H + STINGER	 100%	 360°	 0kg	 EN
	2,6	3,1	3,6	4,1	4,6
1,0	300	300	300	300	300
2,0	300	300	300	300	300
3,0	300	300	300	300	300
4,0	300	300	300	300	300
5,0	300	300	300	290	270
6,1	250	240	230	210	190

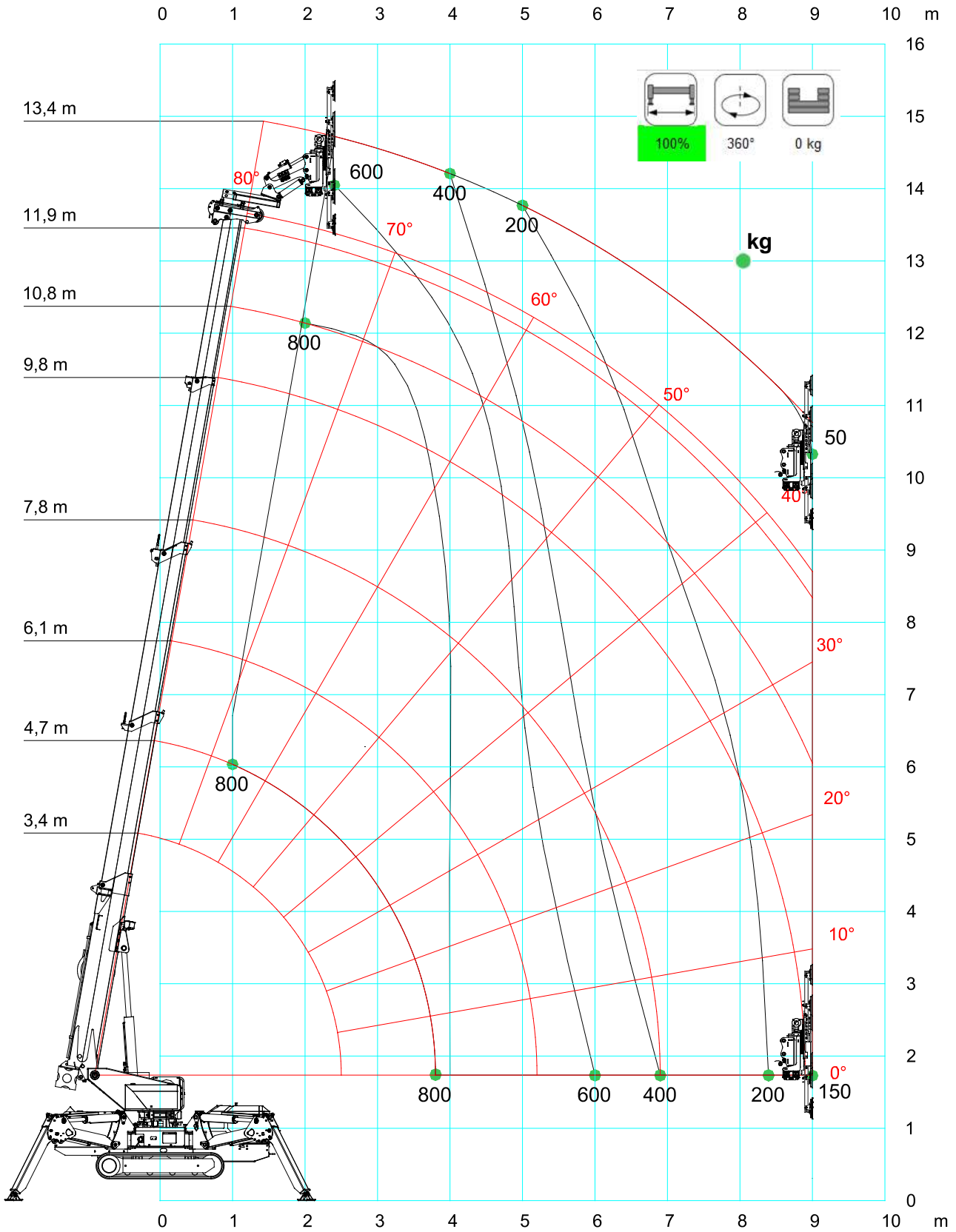
LC527_V302_1016_JIB_STINGER_STAB_100



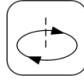
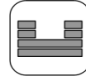

[m] \ [kg]	 JIB600.2H + STINGER	>0km/h icon" data-bbox="421 520 486 562"/> >0km/h	 0°-180°	 0kg	 EN
	2,6	2,8			
2,0	200	100			
3,2	200	100			

LC527_V302_1016_JIB_STINGER_CINGOLO

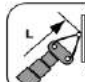

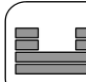

The first column refers to the distance of the jib centre of rotation from 0 on x axis.

SPX536CDH-2 + MR800.4-6+4P



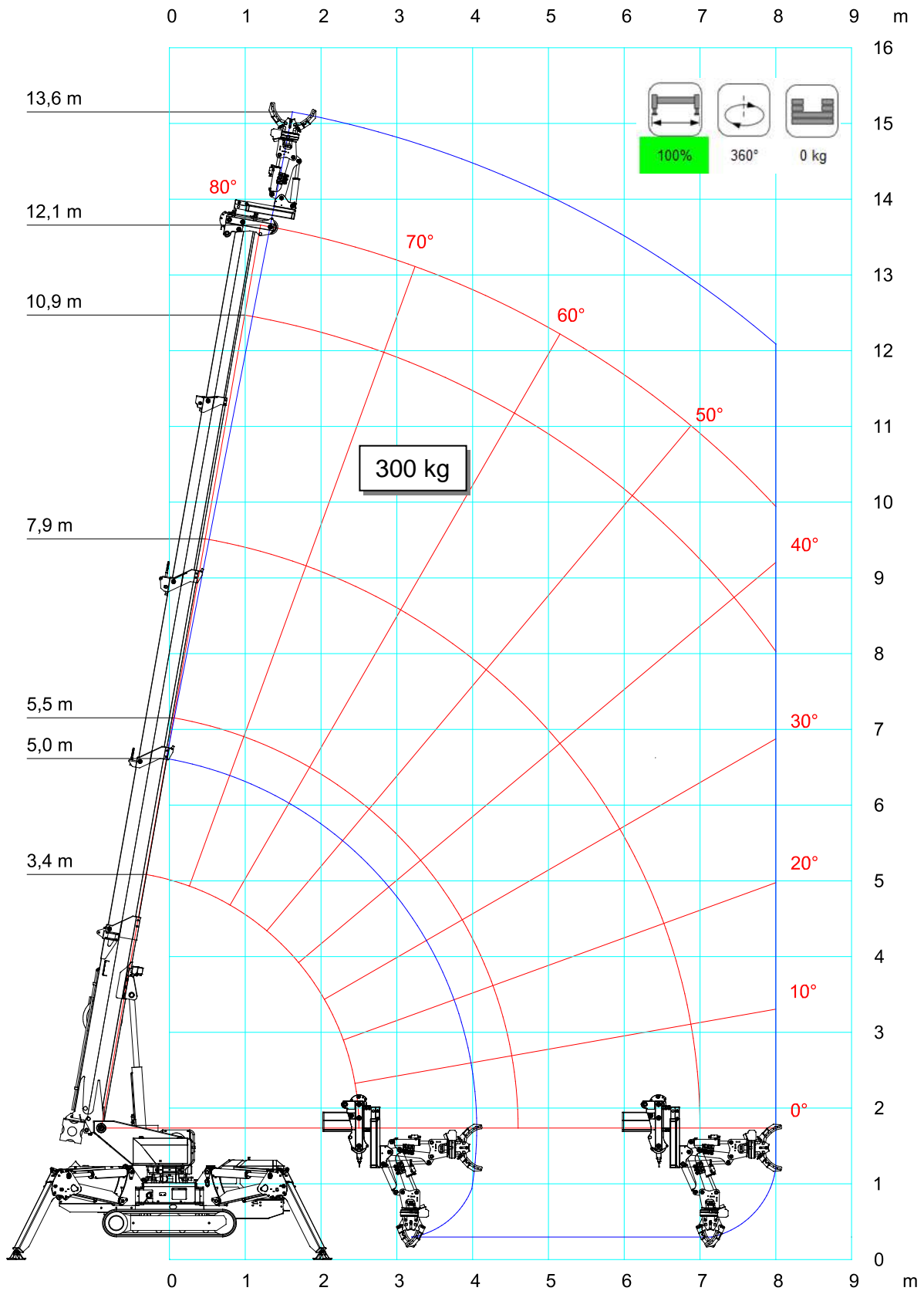
[m] \ [kg]														
	MR800.4-6+4P	100%	360°	0kg	4,7	5,4	6,1	6,8	7,8	8,8	9,8	10,8	11,9	13,4
1,0	800	800												
2,0	800	800	800	800	800	800	800	800	800	800	800	800	700	500
2,5	800	800	800	800	800	800	800	800	800	800	800	800	700	500
3,0	800	800	800	800	800	800	800	800	800	800	800	800	700	500
4,0		800	800	800	800	800	800	800	800	800	800	700	600	400
4,6			800	800	800	800	800	800	800	700	700	600	400	300
5,0			700	700	600	600	600	600	500	500	500	400	300	200
6,0			600	600	400	400	400	400	300	300	300	300	200	100
7,0					400	400	400	400	300	200	200	200	100	50
8,0									300	200	200	100	50	50
9,0												150	50	50

LC527_V302_1016_MR800_STAB_100

[m] \ [kg]		>0km/h icon" data-bbox="421 514 474 550"/>				
	MR800.4-6+4P	>0km/h	0°-180°	0kg	4,7	5,3
1,0	200	100				
2,0	200	100				
2,6	200	100				
3,0	200	100				
4,0	200	100				
5,0	200	100				

LC527_V302_1016_MR800_CINGOLI

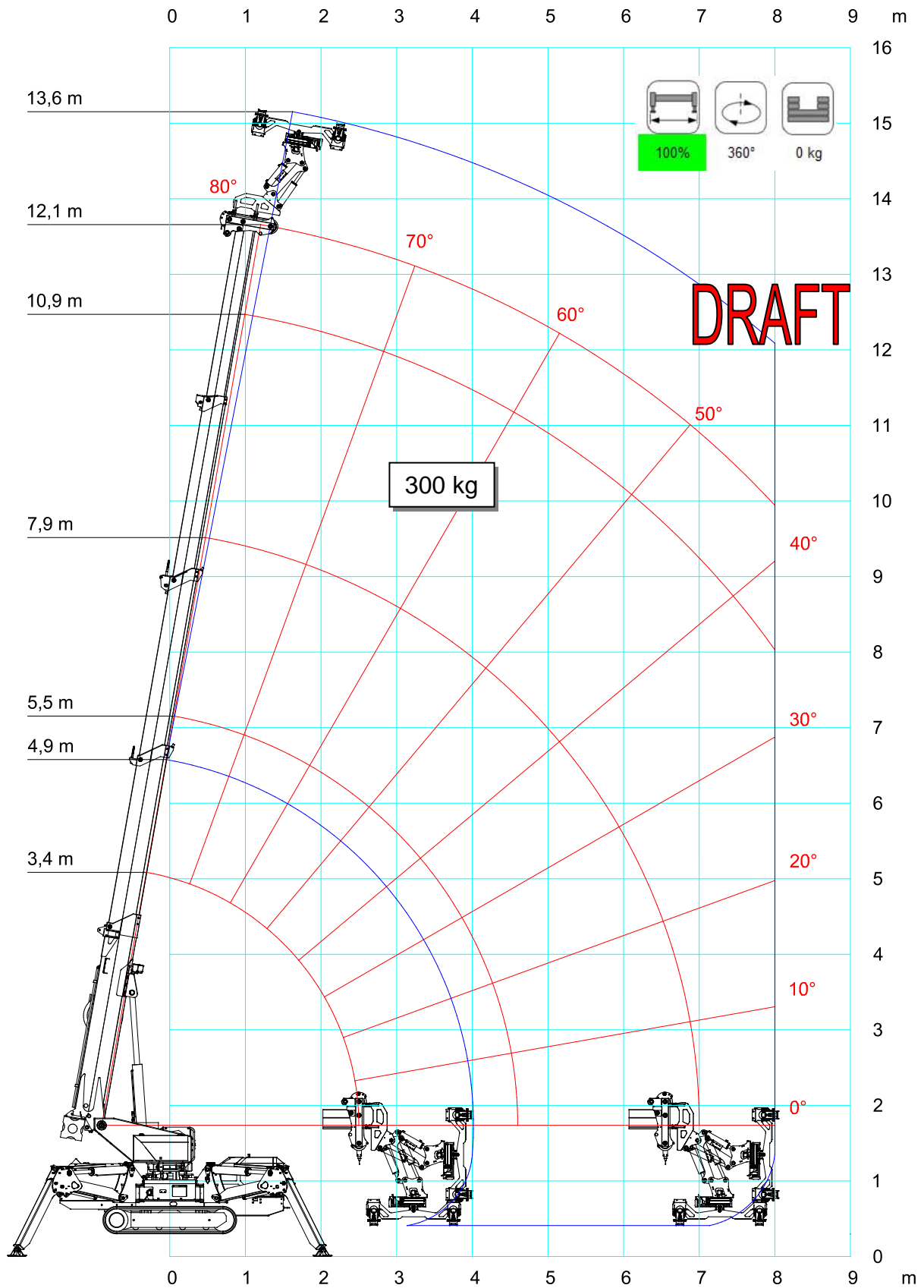
SPX536CDH-2 + JIB301GR



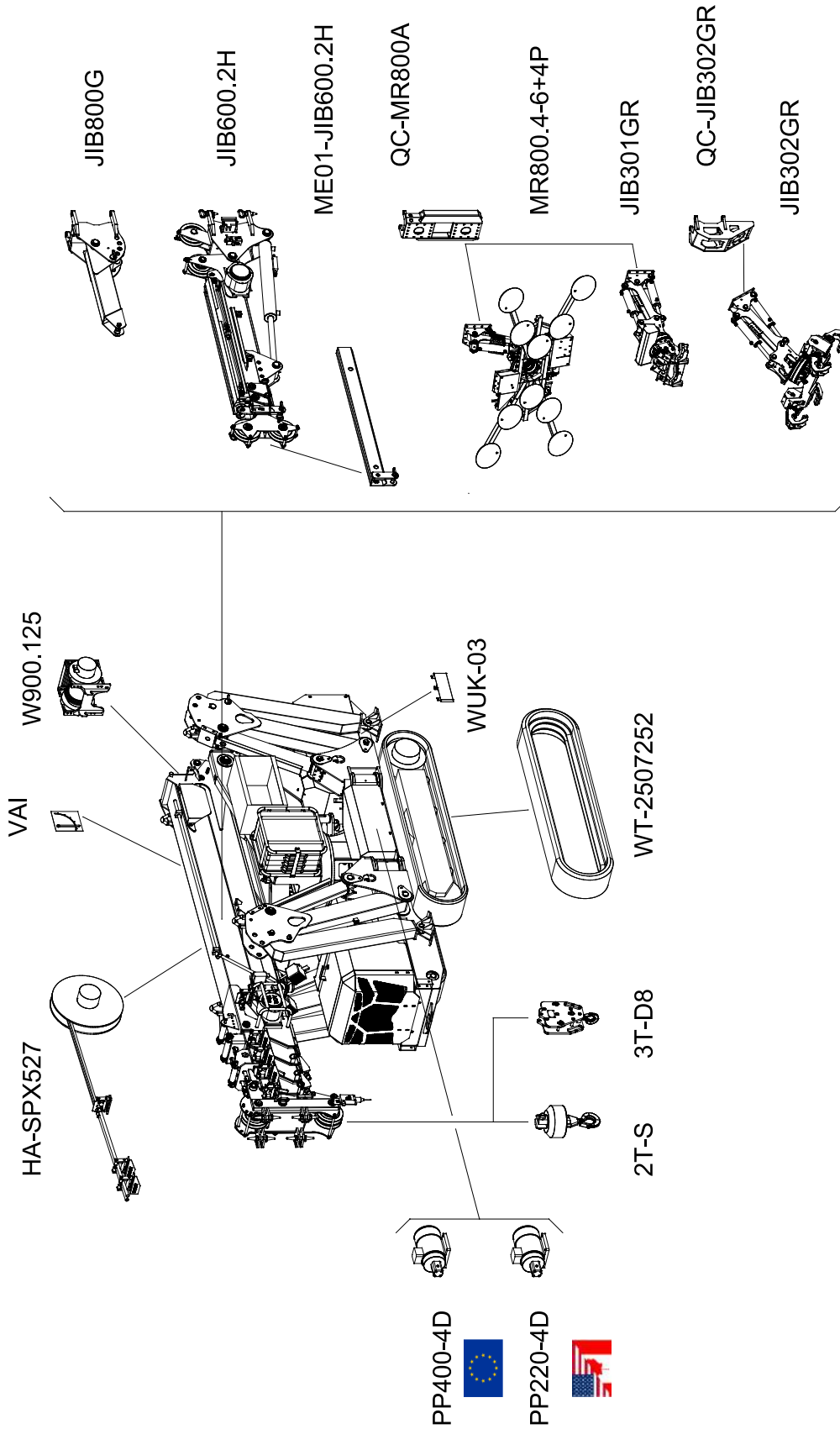


SPX536CDH-2

SPX536CDH-2 + JIB302GR



ACCESSORIES

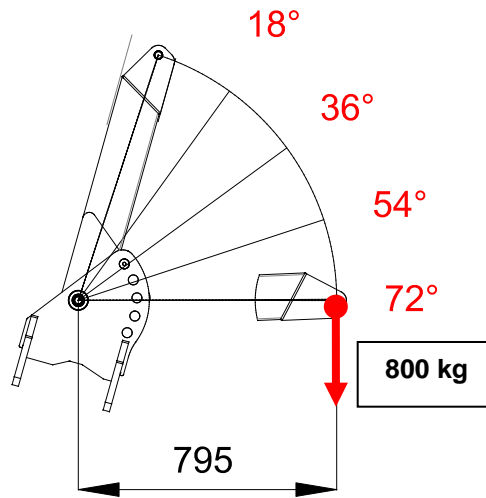


	STD	PC-01	PC-11
Boom, covers and outriggers	RAL2004	RAL____	RAL____
Chassis, frames and tanks	RAL7021	RAL7021	RAL____

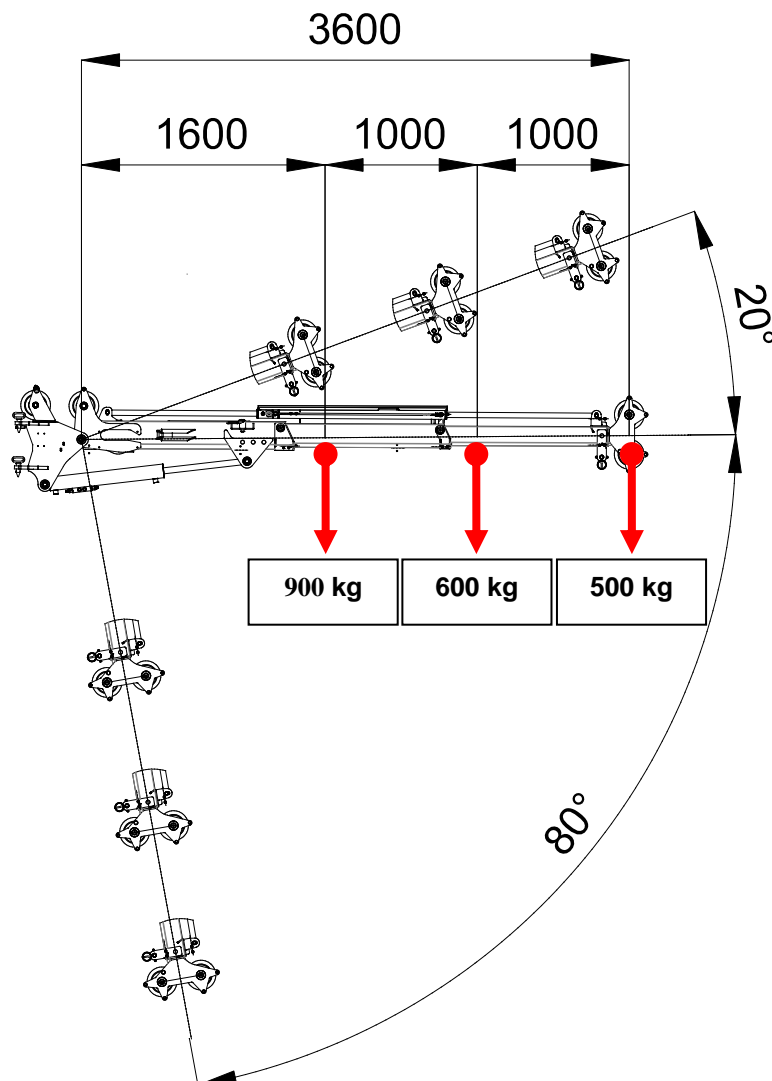
ACCESSORIES FEATURES

JIB 800G

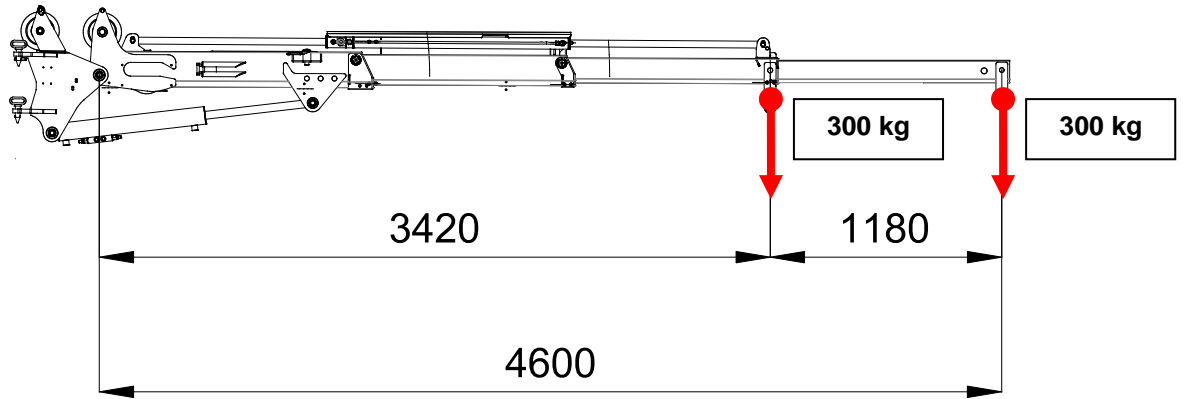
0°



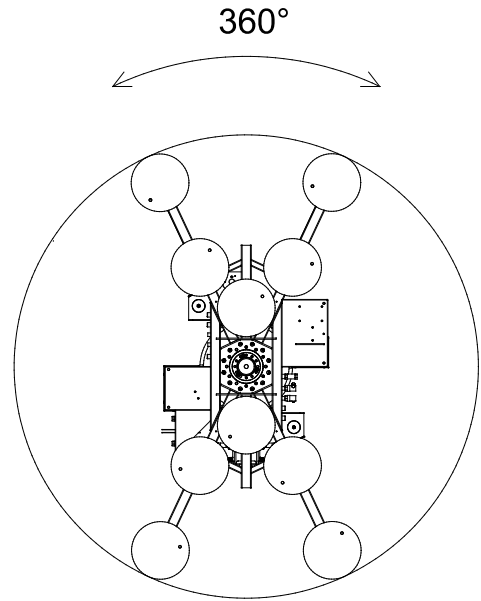
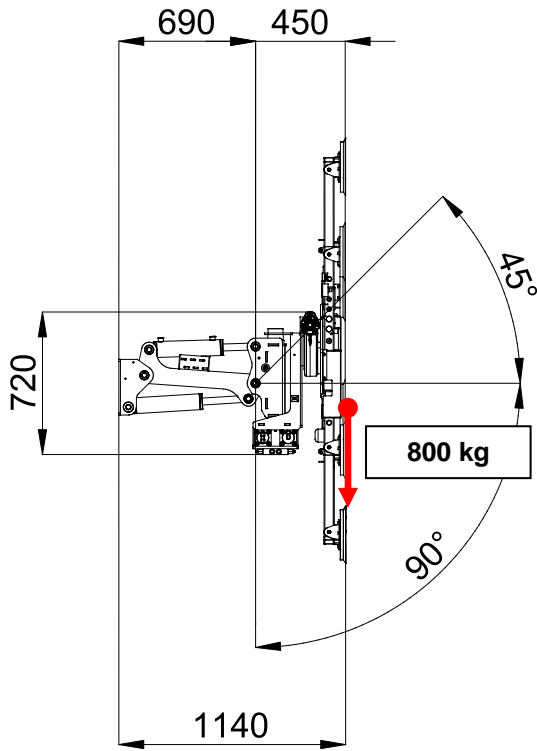
JIB 600.2H



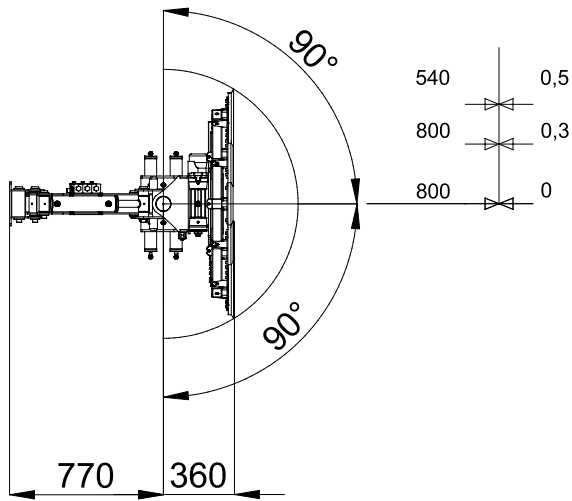
JIB 600.2H + STINGER



MR800.4-6+4P

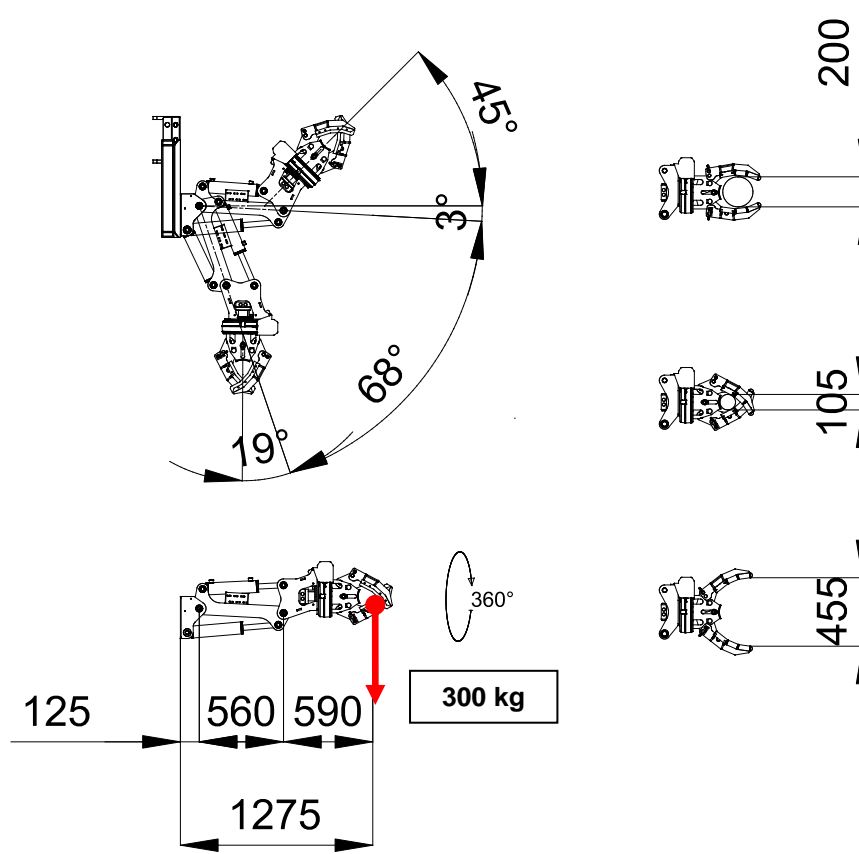


kg m

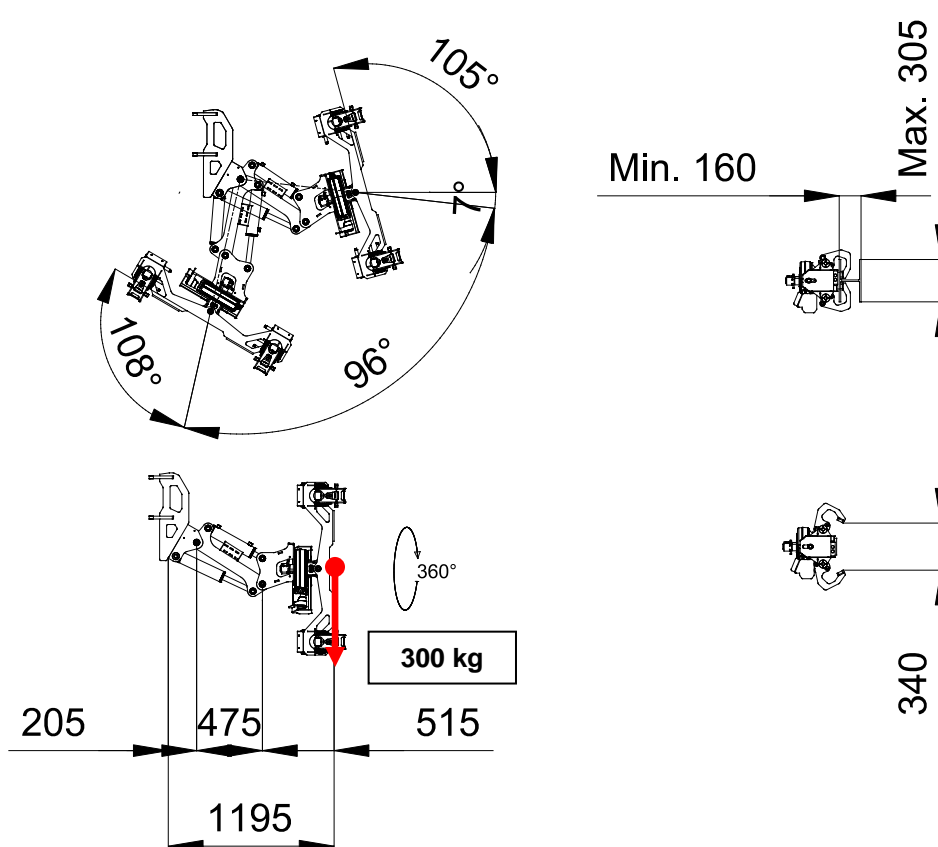


	6	10	n°
	540	800	kg
	270	400	kg

JIB301GR



JIB302GR



SYMBOLS

	Weight		Chart Wheels		Engine		Jib length and angle
	Counterweight		Minipicker		Diesel Fuel		Jib Length
	Crane		Back Wheel Point Loading		Gasoline Fuel		Jib Radius
	Travel Speed		Front wheel Point Loading		Tank		Hydraulic Jib Length
	Gradeability		Travel Speed		Battery		Hydraulic Jib Radius
	Outrigger Load		Gradeability		Power		Mechanical Jib Length
	Track Loading		Working Radius		Boom Angle		Mechanical Jib Radius
	Outriggers Setup		Hookblock		Boom Length		Manipulator Length
	Ext Tracks Width		Slewing		Boom Radius		Manipulator Radius
	Chart On Tracks		Slewing Locked		Jib Hook Radius		Maximum inclination of the machinery
	Jib on board		Without jib on board		Standard		Stabilizing bar
	Horizontal boom angle		Number of vacuum pads		Factory max. load		Building site max. load

Remarks referring to load chart

- The load charts are calculated according to EN 13000.
- For the calculation of the load charts at least a wind speed of 9m/s (33km/h) and regarding the load a sail area of 1m² per ton load and a wind resistance coefficient of 1.2 on the load have been taken into account. For lifting of loads with large sail areas and/or high wind resistance coefficients the maximum wind speed as stated in the load charts has to be reduced.
- Lifting capacities are given in kilograms.
- The weight of the hook blocks and hooks is part of the load and therefore it must be deducted from the lifting capacities.
- Working radii are measured from the slewing centre.
- The lifting capacities given for the telescopic boom apply if the folding jib is removed.
- Subject to modification of lifting capacities.



NOTES

A large, empty rectangular box with a thin black border, intended for handwritten notes.



NOTES

A large, empty rectangular box with a thin black border, intended for handwritten notes.



DEALER



JEKKO S.r.l. via Campardone, 1 Z.I. 31014 Colle Umberto (TV)
Italy tel. +39 0438 1710083 fax +39 0438 1710123
www.jekko.it - info@jekko.it