

Product Catalog

MPK20 • MPK50

The Company



Jekko is a world leading manufacturer of minicranes with more than 45 years of experience in the lifting and handling sector. The company is headquartered in the province of **Treviso**, occupying a **17,000 sq. m.** industrial estate – 7,000 of which are indoors. The entire range of **Jekko minicranes is exported and traded all over the world by a network of more than 30 authorised dealers.** Our products are engineered to meet our customers’ specific requirements and are designed to **operate in narrow places where space is restricted.** Depending on the model, their **compact size** allows passage through a standard or double doorway. But their modest weight and slim dimensions come with no compromise to **lifting capacity or working range**, resulting in substantial

operational benefits both indoors and outdoors. Jekko offers a complete line of **models equipped with diesel engine, electric motor or battery pack** and a wide range of **attachments including hook or hydraulic jibs, grabber manipulators for pipes and beams, vacuum lifters for glass panes as well as lifting beams.** All tools are fully integrated with the functions and safety devices of the base machine. Jekko has always invested in **R&D**, safety and compliance with all relevant regulations – in particular with the **EN 13000** standard – to **offer its customers innovative and safe products.** Jekko is a young business, supported by a professional technical department, reliable training and **after-sales services**, and a sales & marketing office covering all international markets.



PRODUCTS

Jekko minicranes are safe and technologically advanced; payback on a minicrane is immediate in the case of a sale and achieved in the short term in the case of rental.



WORK TEAM

Jekko consists of a young and highly-qualified team whose innovative mindset and enthusiasm for continuing professional development are one of the company's flagship assets.



MADE IN ITALY

From design to assembly, as well as components and suppliers, all our products are 100% Made in Italy.



INTERNATIONAL NETWORK

Jekko is present in the five continents through its network of more than 30 authorised dealers.



AFTER-SALES SERVICE

Jekko's prompt and reliable after-sales operation offers an online service for spares and warranty management and a training department for technical courses.



INNOVATION

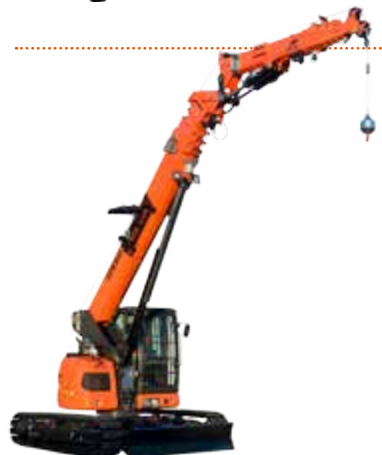
Jekko products take innovation to the limit, with exhaustive research and engineering and a thorough understanding of market needs.

Our Products



MINICRANES

Six different telescopic mini crawler crane models with outriggers – designed for easy transport and ultimate versatility. These machines can work in all kinds of places – slopes, stairs, passageways and hard-to-reach places – and they are quick to set up.



TELE-CRAWLER CRANES

Jekko produces the only mini crawler crane on the market with an operator's cab and luffing capability thanks to its hydraulic articulated jib. It also has all the most advanced technological innovations that crane owners have come to expect: radio remote control, extendable tracks, option of diesel engine or electric motor, 3 T pick & carry capacity, hydraulic jib reaching 27.5 m and more than 50 configurations available.



JF SERIES ARTICULATED CRAWLER CRANES

This model, combining an articulated truck-loader crane on a self-propelled crawler chassis, offers a glimpse of the future of crawler cranes.

MINIPICKERS

Minipickers are our pick & carry self-propelled electric cranes powered by a battery and radio-remote controlled. They are well suited to working in warehouses or where access is difficult for other cranes, especially where heavy loads need to be carried through doorways. Minipickers can also be used with Jekko hydraulic manipulators or vacuum lifters for handling and positioning glazing or curtain walling.



VACUUM & TOOLS

Lifting and handling tools for glass panes and other materials. This family of products includes hydraulic or battery-powered manipulators, vacuum lifters for glass-pane handling, grabber manipulators for pipes and beams and other specific tools.



All our cranes are designed to operate in narrow places where space is restricted. Our ongoing R&D activity has brought these machines into many sectors of industry.

Sectors of application



Glass pane handling

Installation of glazing and curtain walling on buildings and skyscrapers, handling glass panes and non-porous materials using hydraulic manipulators and vacuum lifters integrated with our cranes.



Constructions & Building

All kinds of building work, from housing to civil engineering.



Mining, oil, nuclear, chemical, drilling and military sectors

These specific fields demand the highest standards in terms of accuracy, light-weight tools and handiness: that's exactly what Jekko minicranes offer.



Industrial maintenance

Indoor and outdoor industrial maintenance: shopping malls, ships, museums, schools, hospitals, exhibition halls as well airports, sports grounds, roads, leisure parks, graveyards, houses, railways, etc...



... and others

With its entrepreneurial flair, Jekko has introduced the mini crane concept to all kinds of niche applications, including cinema, advertising, product promotion, airspace, luxury, etc...

Our Strengths



LMI-LOAD MOMENT INDICATOR

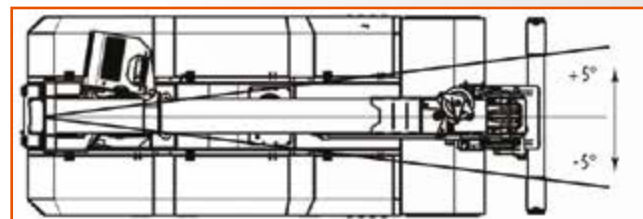
- ✓ Displays all the information on the boom or any attachment position
- ✓ Displays weight of the load being lifted and the maximum safe working load capacity
- ✓ Prevents overloading and tipping by cutting out when safe limits are approached



BOOM ROTATION

- ✓ For MPK50: Innovative boom rotation system $+5^{\circ} / -5^{\circ}$

PATENTED



USER FRIENDLY

- ✓ Three simple steps to work



Switch on



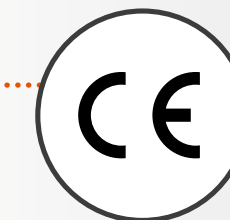
Confirm



Work

SAFEST CRANE IN THE MARKET

- ✓ In compliance with EN 13000
- ✓ C.E. Certified
- ✓ Overload Data Logging



PROFESSIONAL RADIO REMOTE CONTROL

- ✓ Proportional
- ✓ Multifunctions (up to 3 movements)
- ✓ LCD display
- ✓ Crane and wheel control



DIFFERENT ATTACHMENTS

- ✓ Different jibs and manipulators
- ✓ Hook mode or pulley mode



RUNNER JIB (MPK20)



TILTING HEAD (MPK50)



TWO SECTIONS
MODULAR JIB
(MPK50)



GLASS
MANIPULATOR

FRONT STABILIZER

- ✓ For MPK50
- To increase stability and lifting capacity



Standard Equipment



ANTI TWO BLOCK (A2B)

It prevents the hook from being pulled against the boom end.

MANUAL STEERING WHEEL

On MPK20.



TRANSPORTATION ANCHOR POINTS

Anchor points to lift and handle the crane.



PICK&CARRY

✓ Move your load on wheels, without stabilizations



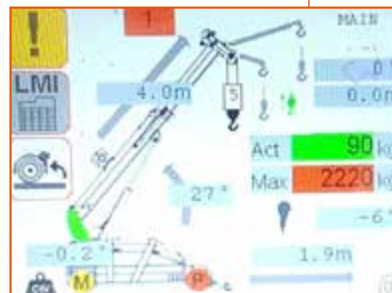
RECHARGEABLE BATTERIES

- ✓ MPK20: n°1 Batteries 24V 345Ah
- ✓ MPK50: n°2 Batteries 48V 620Ah



SOFTWARE

It manages and controls all functions of the machine, thus ensuring maximum safety.



PROFESSIONAL RADIO REMOTE CONTROL

Only for MPK50 included.

- ✓ Proportional
- ✓ Multifunctions (up to 3 movements)
- ✓ LCD Display
- ✓ Crane and wheel control



SINGLE LINE HOOK

Swivel overhaul ball.



DIAGNOSTIC TROUBLE CODE (DTC)

It displays a code that enables the operator or service technician to identify any problem and solve it, thus making troubleshooting faster and easier.



LED WORKING LIGHT

To improve visibility in the dark.



LOW MARKING TRACKS WHEELS

Ideal for indoor maintenance applications.



VISUAL ANGLE INDICATOR (VAI)



TOWER LAMP

Indicators warn of any faults or dangers.



Configurations & Options



DIFFERENT ATTACHMENTS



Runner jib



Manual jib



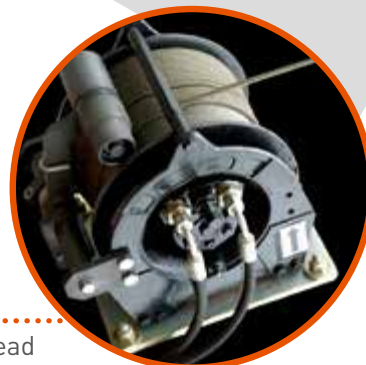
Glass Manipulator

MULTIPLE LINE PULLEY BLOCK

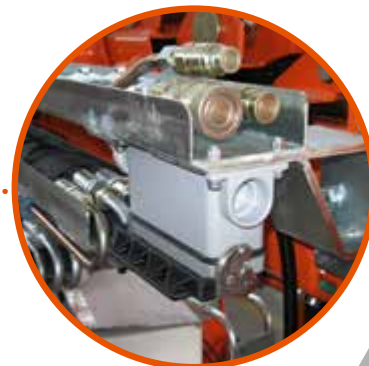


HYDRAULIC WINCH

- ✓ MPK20: 600kg, 60m, 7mm & Pulley Head
- ✓ MPK50: 1000Kg capacity, - 60-metre wire rope



HYDRAULIC EXTRA FUNCTIONS MPK20



PERSONALIZED COLOR



RADIO REMOTE CONTROL V2

- ✓ Only for MPK20





MPK20 • MPK50












MPK20

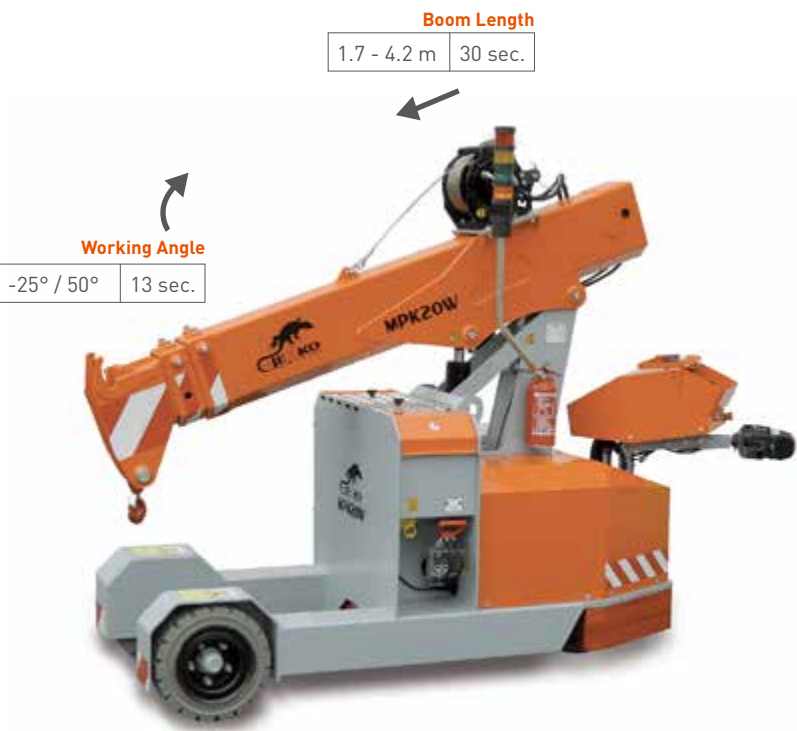


The essential partner for industrial maintenance and glass handling.
Reliable, safe and easy to use: a small crane with great potential.



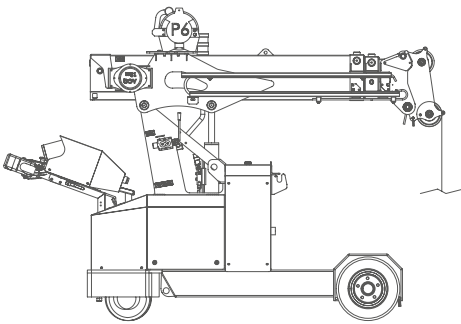
Technical Information

| | | | |
|-------------------------|--|-----------------------------|----------------------|
| Dimension |  L x W x H | | 2660 x 950 x 1950 mm |
| Crane & Options Weights |  | Kg | |
| |  | MPK20 | 1455 |
| |  | / | 500 |
| |  | 2T-D7 | 10 |
| |  | JIB500G | 30 |
| |  | MR800.4 | 250 |
| MPK20 | Battery | 1 Battery 24 V 345 Ah | 3,0 kW 4,2 Hp |
| Speed |  | 3.6 km/h | |
| Gradability |  | 10° | |



Winch & Fall Stages

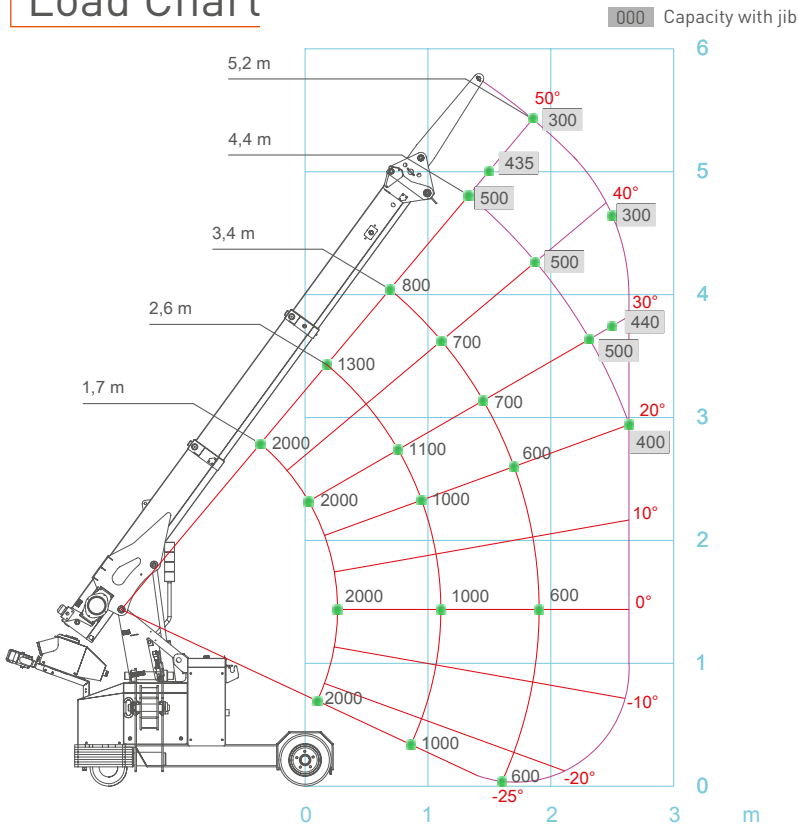
| | |
|------------|--------------------------------------|
| Main Winch | 600 kg 60 m - Ø 7 mm 18 m/min. |
|------------|--------------------------------------|



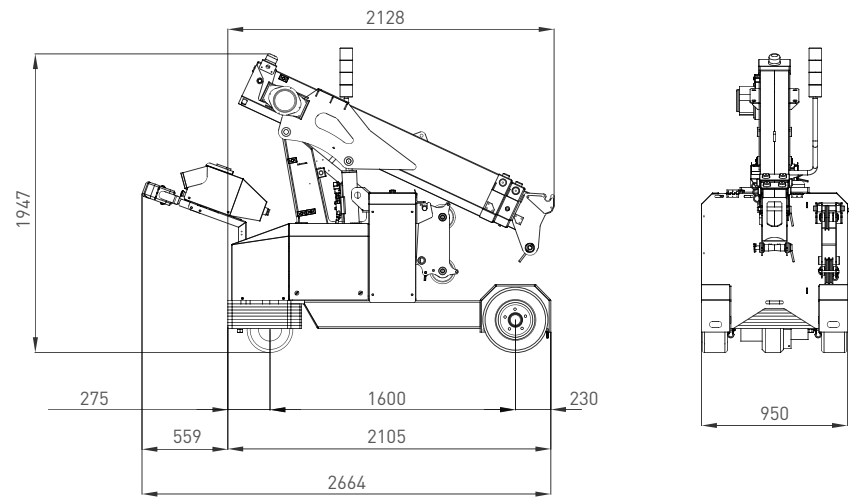
| Max. Capacity | Line | Metres |
|---------------|------|--------|
| 1800 kg | 3 | -19 m |
| 1200 kg | 2 | -28 m |
| 600 kg | 1 | -55 m |



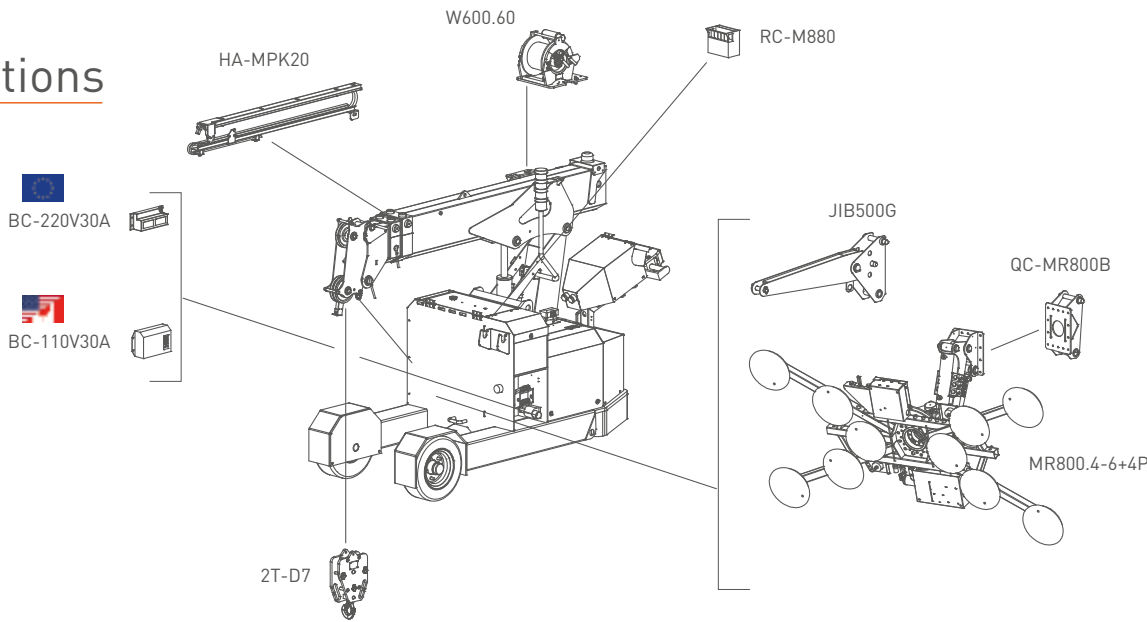
Load Chart



Dimensions



Crane Options



Tools Configurations

| JIB500G | MR800 |
|----------------|----------------|
| 500 kg | 800 kg |
| 300 kg @ 5.5 m | 150 kg @ 4 m |
| 400 kg @ 2.5 m | 150 kg @ 3.5 m |



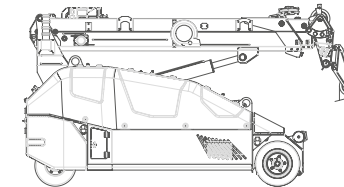
Technical Information

| | | |
|-------------------------|----------------|---|
| Dimension | L x W x H | 3050 x 1200 x 1750 mm |
| Crane & Options Weights | | Kg |
| | MPK50 | 3450 |
| | / | 1000 |
| | 5T-D8 | 10 |
| | JIB1800-700.2M | Module 1800 / 32 Kg Module 700 / 23 Kg Tot. 55 Kg |
| | MV600.3E+ | 180 |
| MPK50 | Battery | 2 Batteries 24 V 620 Ah |
| | | 12 kW 16,1 Hp |
| Speed | | 4.0 km/h |
| Gradability | | 20° |



Winch & Fall Stages

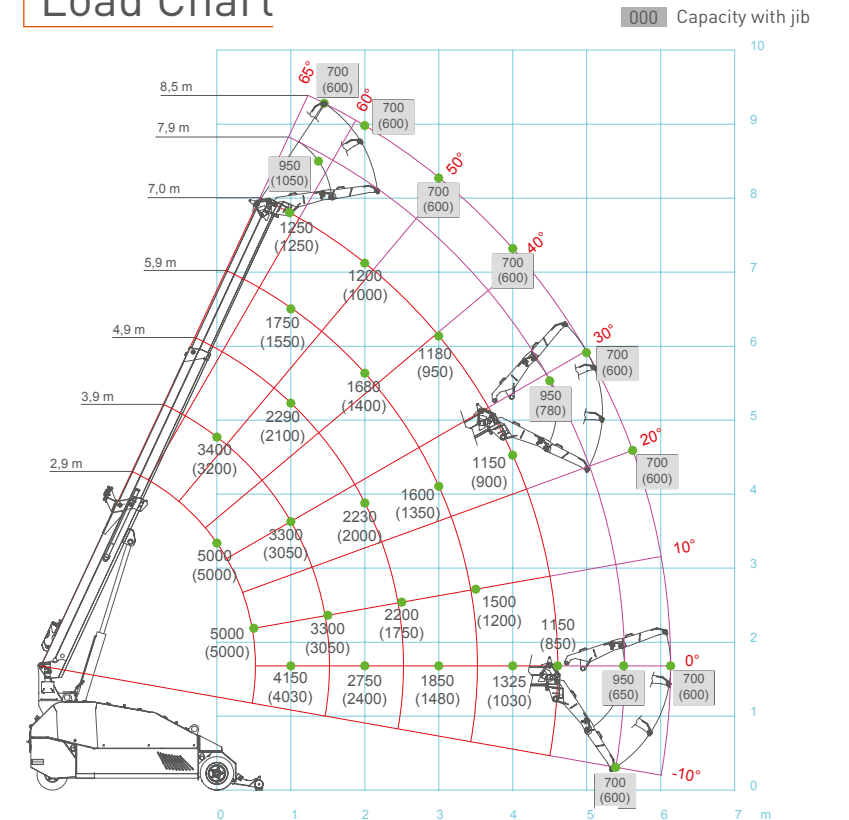
| | |
|------------|---|
| Main Winch | 1000 kg 60 m - Ø 8 mm 45.1 m/min. |
|------------|---|



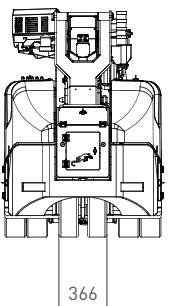
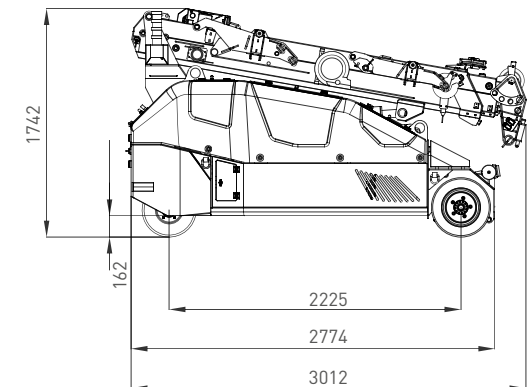
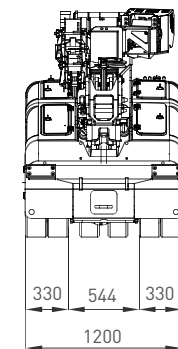
| Max. Capacity | Line | Metres |
|---------------|------|--------|
| 5000 kg | 5 | -11 m |
| 4000 kg | 4 | -13 m |
| 3000 kg | 3 | -18 m |
| 2000 kg | 2 | -27 m |
| 1000 kg | 1 | -53 m |



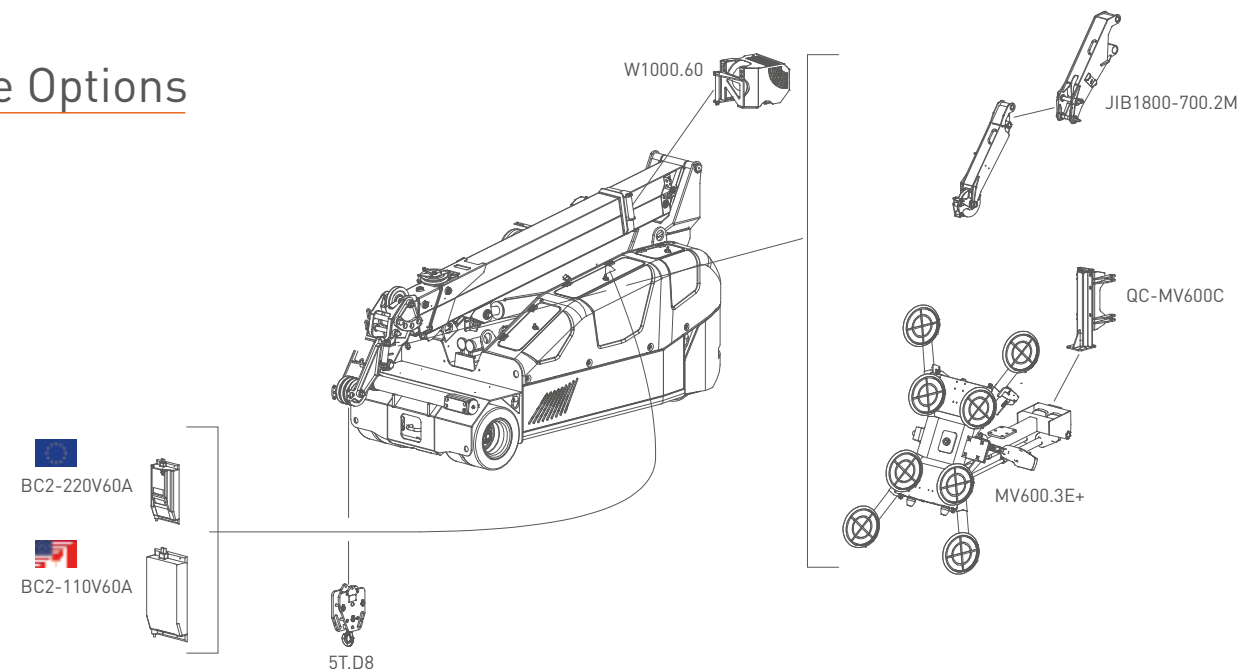
Load Chart



Dimensions



Crane Options



Tools Configurations

| JIB1800-700.2M | Short | Long |
|----------------|-----------------|--------------|
| | 1800 kg | 700 kg |
| | 1000 kg @ 8.5 m | 700 kg @ 9 m |
| | 950 kg @ 5.5 m | 700 kg @ 6 m |

| MV600.3E+ | |
|-----------|----------------|
| | 600 kg |
| | 600 kg @ 8 m |
| | 500 kg @ 6.5 m |



MPK20 • MPK50





S Symbols

| | | | | | | | | | | | | | | | | | | | |
|--|---|--|---|--|--|--|--|--|---|--|--|--|--|--|--|--|---|--|--|
| | Dimensions Dimensioni Abmessungen Dimensions Dimensions | | Crane Gru Kran Grua Grue | | Electrical system Impianto elettrico Elektrische Anlage Sistema eléctrico Circuit électrique | | Boom Slewing Rotazione braccio Auslegerdrehung Giro Rotation rallonge | | Max reach Sbraccio massimo Max. Reichweite Alcance máximo Extension maximale du bras | | Gradeability Pendenza superabile Steigfähigkeit Grado de inclinación Aptitude en pente | | Main winch Argano principale Haupthubwerk Huinche principal Trevil principal | | Tilting angle Angolo di inclinazione Auslegerverstellwinkel Angulo de inclinación Angle flèche | | Slewing Rotazione Drehwerk Rotación Rotation | | Liquid cooling Raffreddamento liquido Flüssigkeitskühlung Enfriamiento del líquido Refroidissement liquide |
| | Weight Peso Gewicht Peso total Poids | | Travel speed Velocità di traslazione Fahrgeschwindigkeit Velocidad de desplazamiento Vitesse de déplacement | | Auxiliary power pack Elettropompa ausiliaria Zusatzpumpe Electrobomba auxiliar Électropompe auxiliaire | | Basket rotation Rotazione cestello Korbrotation Rotación carretilla Rotation nacelle | | Max height Altezza massima Max. Höhe Altura máxima Hauteur maximale | | Max outrigger load Stabilizzatori Abstützungen Estabilizadores Stabilisateurs | | Jib - prolunga Auslegerverlängerung Jib prolongación Flèche | | Rotation angle Angolo di rotazione Drehwinkel Angulo de rotación Angle de rotation | | Building site use Utilizzo in cantiere Gebrauch auf Baustelle Utilización en el sitio Utilisation sur le site | | Hookblock / Capacity Gancio / Capacità Hakenflasche / Traglast Gancho / Capacidad Crochet / Force de levage |
| | Counterweight Contrappeso Gegengewicht Contrapeso Contrepoids | | Boom lifting Elevazione braccio Wipwerk Elevación de pluma Léverage | | Man basket SWL Capacità cestello Korblast Capacidad carretilla Capacité nacelle | | Number of pads Numero di ventose Anzahl der Saugteller Número de ventosas Nombre de ventouses | | Opened lifting beam Bilanciere aperto Geöffnet Traverse Balancine de carga abierto Balancier ouvert | | Max track loading Pressione al suolo Bodendruck Presion de apoyo Pression au sol | | Engine Motore Motor Moteur | | Slewing angle Angolo di rotazione Schwenkwinkel Angulo de rotación Angle de rotation | | Manipulator Manipolatore Manipulator Manipulador Manipulateur | | Unleaded petrol fuel Alimentazione benzina senza piombo Benzinversorgung, bleifrei Alimentación gasolina sin plomo Alimentación essence sans plomb |
| | Pad diameter Diametro ventosa Saugtellerdurchmesser Diámetro ventosa Diamètre ventouse | | Max working height Massima altezza di lavoro Max. Arbeitshöhe Altura máxima Hauteur max. de travail | | Max working radius Massimo raggio di lavoro Max. Reichweite Rayo máximo de trabajo Rayon max. de travail | | Closed lifting beam Lunghezza chiusa Geschlossen Traverse Balancine de carga cerrado Balancier fermé | | Diesel fuel Alimentazione Diesel Dieselversorgung Alimentación Diesel Alimentación Diesel | | Rope length Lunghezza fune Seillänge Longitud de la cuerda Longueur câble | | Maximum SWL Portata massima Max. Tragfähigkeit Carga máxima Portée max. | | Vertical lifting Sollevamento verticale Vertikaler Hub Elevación vertical Élévation verticale | | Stabilization area Area di stabilizzazione Abstützung Área de estabilización Zone de stabilisation | | Air cooling Raffreddamento ad aria Luftkühlung Enfriamiento del aire Refroidissement air |
| | Factory use Utilizzo in fabbrica Gebrauch in Werkhalle Utilización en la fábrica Utilisation dans l'usine | | Boom telescoping Lunghezza braccio Teleskopierlänge Brazo telescópico Télescopage flèche | | Piston Pistone Kolben Pistón Piston | | Power Potenza Leistung Potencia Puissance | | Horizontal lifting Sollevamento orizzontale Horizontaler Hub Elevación horizontal Élévation horizontale | | Air cooling Raffreddamento ad aria Luftkühlung Enfriamiento del aire Refroidissement air | | Piston Pistone Kolben Pistón Piston | | Power Potenza Leistung Potencia Puissance | | Horizontal lifting Sollevamento orizzontale Horizontaler Hub Elevación horizontal Élévation horizontale | | Air cooling Raffreddamento ad aria Luftkühlung Enfriamiento del aire Refroidissement air |

A Acronyms

| | | | | | | | |
|------------------------------|--|-----------------------------|------------------------------------|-----------------------------------|------------------------------------|------------------------------------|------------------------|
| A2B Anti Two Block | GSC Geometrical Stability Control | TH Tilting Head | BPI Boom Pressure Indicator | PPA Plug & Play Attachment | 2SW Two Speed Winch | DTC Diagnostic Trouble Code | VW Virtual Wall |
| EXT Extendable Tracks | SCI Stability Control Indicator | 2ST Two Speed Tracks | LMI Load Moment Indicator | RCD Radio Control Display | CCI Crane-Carrier Interlock | P&C Pick & Carry | |

Notes: All specifications and features herein described can be changed without prior advice. All indicated data are indicative only and are not binding as crane performs differently depending on its use.

Note: Tutte le caratteristiche e le specifiche descritte possono essere soggette a variazioni senza preavviso. Tutti i dati riportati sono forniti a puro titolo informativo e non sono impegnativi dal momento che le prestazioni della macchina variano in funzione dell'utilizzo.

Hinweise: Unangekündigte Änderungen sämtlicher Eigenschaften und Daten sind möglich. Alle Angaben sind Richtwerte und nicht verbindlich da die Leistungen der Vorrichtung von deren Einsatz abhängen.

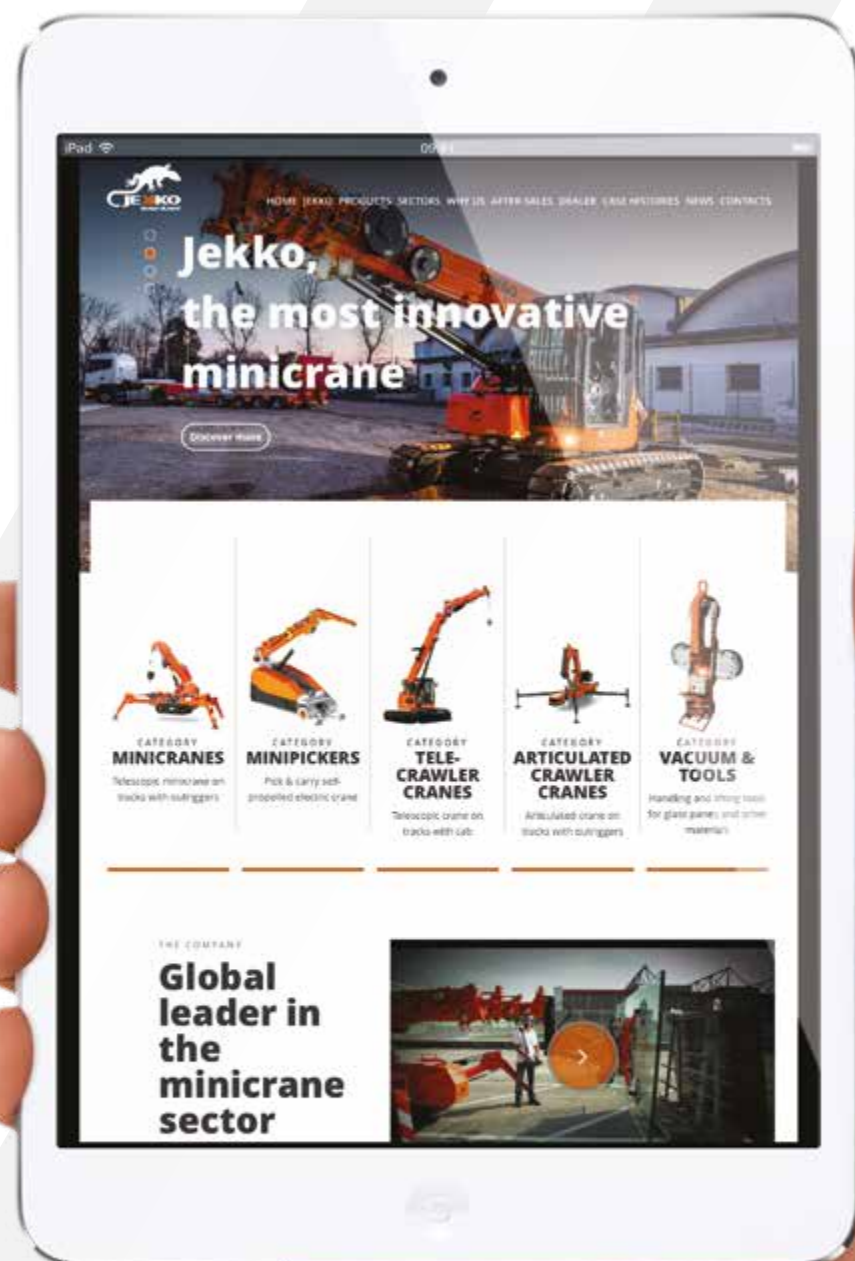
Notas: Todas las características y las especificaciones aquí indicadas pueden ser sujetas a variaciones sin aviso. Se dan todos los datos aquí indicados como simples informaciones. No se consideran como vinculantes, dado que las prestaciones del maquinario pueden variar.

Notes: Toutes les caractéristiques et les spécifications descriptives peut être sujet à variation sans préavis. Tout les données rapportés sont fourni à titre informatif et ne sont pas engager au moment que la prestation de la machine change en fonction de l'emploi.



www.jekko.it

Visit **jekko.it** to keep in contact with us, discover all the latest news and find out technical details of all our products.





Jekko srl

Via Campardone, 1 - 31014 Colle Umberto (TV) Italy
info@jekko.it - www.jekko.it