



Product Catalog

SPX527 • SPX1040 • SPX1275

The Company



Jekko is a world leading manufacturer of minicranes with more than 45 years of experience in the lifting and handling sector. The company is headquartered in the province of **Treviso**, occupying a **17,000 sq. m.** industrial estate – 7,000 of which are indoors. The entire range of **Jekko minicranes is exported and traded all over the world by a network of more than 30 authorised dealers.** Our products are engineered to meet our customers' specific requirements and are designed to **operate in narrow places where space is restricted.** Depending on the model, their **compact size** allows passage through a standard or double doorway. But their modest weight and slim dimensions come with no compromise to **lifting capacity** or **working range**, resulting in substantial

operational benefits both indoors and outdoors. Jekko offers a complete line of **models equipped with diesel engine, electric motor or battery pack** and a wide range of **attachments including hook or hydraulic jibs, grabber manipulators for pipes and beams, vacuum lifters for glass panes as well as lifting beams.** All tools are fully integrated with the functions and safety devices of the base machine. Jekko has always invested in **R&D**, safety and compliance with all relevant regulations – in particular with the **EN 13000** standard – to **offer its customers innovative and safe products.** Jekko is a young business, supported by a professional technical department, reliable training and **after-sales services**, and a sales & marketing office covering all international markets.



PRODUCTS

Jekko minicranes are safe and technologically advanced; payback on a minicrane is immediate in the case of a sale and achieved in the short term in the case of rental.



WORK TEAM

Jekko consists of a young and highly-qualified team whose innovative mindset and enthusiasm for continuing professional development are one of the company's flagship assets.



MADE IN ITALY

From design to assembly, as well as components and suppliers, all our products are 100% Made in Italy.



INTERNATIONAL NETWORK

Jekko is present in the five continents through its network of more than 30 authorised dealers.



AFTER-SALES SERVICE

Jekko's prompt and reliable after-sales operation offers an online service for spares and warranty management and a training department for technical courses.



INNOVATION

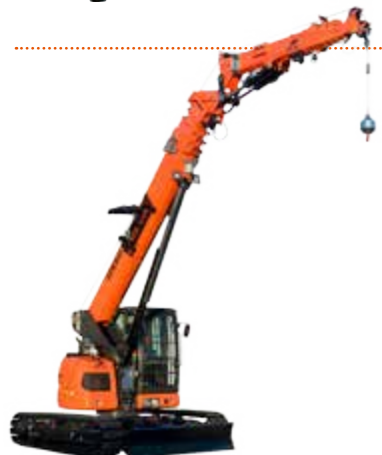
Jekko products take innovation to the limit, with exhaustive research and engineering and a thorough understanding of market needs.





MINICRANES

Six different telescopic mini crawler crane models with outriggers – designed for easy transport and ultimate versatility. These machines can work in all kinds of places – slopes, stairs, passageways and hard-to-reach places – and they are quick to set up.



TELE-CRAWLER CRANES

Jekko produces the only mini crawler crane on the market with an operator's cab and luffing capability thanks to its hydraulic articulated jib. It also has all the most advanced technological innovations that crane owners have come to expect: radio remote control, extendable tracks, option of diesel engine or electric motor, 3 T pick & carry capacity, hydraulic jib reaching 27.5 m and more than 50 configurations available.



JF SERIES ARTICULATED CRAWLER CRANES

This model, combining an articulated truck-loader crane on a self-propelled crawler chassis, offers a glimpse of the future of crawler cranes.

MINIPICKERS

Minipickers are our pick & carry self-propelled electric cranes powered by a battery and radio-remote controlled. They are well suited to working in warehouses or where access is difficult for other cranes, especially where heavy loads need to be carried through doorways. Minipickers can also be used with Jekko hydraulic manipulators or vacuum lifters for handling and positioning glazing or curtain walling.



VACUUM & TOOLS

Lifting and handling tools for glass panes and other materials. This family of products includes hydraulic or battery-powered manipulators, vacuum lifters for glass-pane handling, grabber manipulators for pipes and beams and other specific tools.



All our cranes are designed to operate in narrow places where space is restricted. Our ongoing R&D activity has brought these machines into many sectors of industry.

Sectors of application



Glass pane handling

Installation of glazing and curtain walling on buildings and skyscrapers, handling glass panes and non-porous materials using hydraulic manipulators and vacuum lifters integrated with our cranes.



Constructions & Building

All kinds of building work, from housing to civil engineering.



Mining, oil, nuclear, chemical, drilling and military sectors

These specific fields demand the highest standards in terms of accuracy, light-weight tools and handiness: that's exactly what Jekko minicranes offer.



Industrial maintenance

Indoor and outdoor industrial maintenance: shopping malls, ships, museums, schools, hospitals, exhibition halls as well airports, sports grounds, roads, leisure parks, graveyards, houses, railways, etc...



... and others

With its entrepreneurial flair, Jekko has introduced the mini crane concept to all kinds of niche applications, including cinema, advertising, product promotion, airspace, luxury, etc...

Our Strengths



GEOMETRICAL STABILITY CONTROL

- ✓ Outriggers multi-position
- ✓ Automatic load of working area
- ✓ Different working area:
 - Red - 0%
 - Grey - pick&carry
 - Yellow - 50%
 - Green - 100%



1

2



PICK & CARRY AND EXTENDABLE TRACKS

- ✓ Move your load on tracks, without stabilizers
- ✓ 2 T and 360° P&C with the extendable tracks on SPX1040 and SPX1275
- ✓ 500 kg P&C on SPX527

USER FRIENDLY

- ✓ Three simple steps to work



Switch on



Confirm

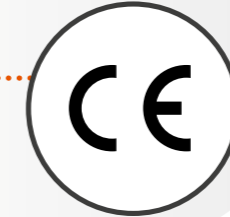


Work

3

SAFEST CRANE ON THE MARKET

- ✓ In compliance with EN 13000
- ✓ C.E. Certified
- ✓ Overload Data Recording



4

PROFESSIONAL RADIO REMOTE CONTROL

- ✓ Proportional
- ✓ Multifunctional (up to 3 movements)
- ✓ LCD Display



5

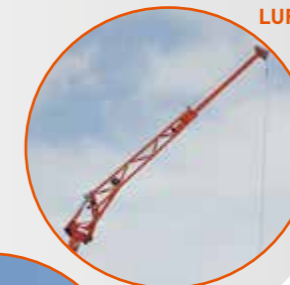
DIFFERENT ATTACHMENTS

- ✓ Three different jib options
- ✓ Different tools completely integrated and radio remote controlled: glass manipulator, pipe manipulator, beam manipulator
- ✓ The SPX1275 is the only mini crane on the market with a 1500 kg jib that has three hydraulic extensions

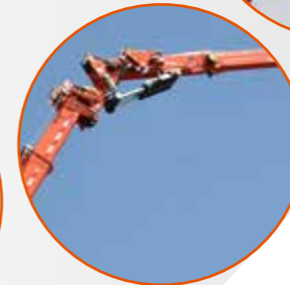
GLASS MANIPULATOR



LUFFING JIB



SEARCHER HOOK



HYDRAULIC JIB

GRABBER MANIPULATOR



7

VIRTUAL WALLS

- ✓ The operator can program safe working zones for the crane, setting perimeter boundaries beyond which the boom is prevented from reaching over



Standard Equipment



ANTI TWO BLOCK (A2B)

It prevents the hook from being pulled against the boom end.

BUBBLE LEVEL

To verify the correct stabilization of the crane.

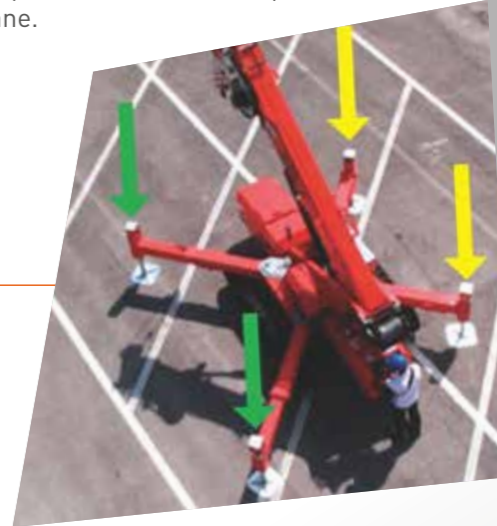


DOUBLE OUTRIGGER EXTENSION

Double extension of the outriggers to allow different areas of stabilization. (50% and 100% of the maximum load).

TRANSPORTATION ANCHOR POINTS

Anchor points to lift and transport the crane.

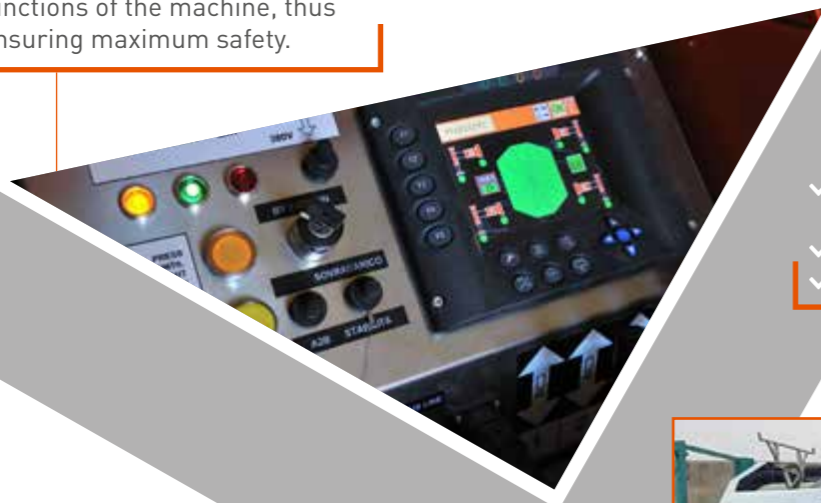


CRANE-CARRIER INTERLOCK (CCI)

This system interlocks the functions of the crane and of the carrier. When the boom is stowed, outriggers and tracks can be operated but the boom can be operated only when the machine is stabilized.

SOFTWARE

It manages and controls all functions of the machine, thus ensuring maximum safety.



WINCH

- ✓ To reach all the load capacities by means a rope and a pulley system
- ✓ Long rotation-resistant ropes
- ✓ 2-speed winches



SINGLE LINE HOOK

Swivel overhaul ball.



DIAGNOSTIC TROUBLE CODE (DTC)

It displays a code that enables the operator or service technician to identify any problem and solve it, thus making troubleshooting faster and easier.



JIB HOOK OR WINCH MODE

Possibility of working with either the winch or hook.

LED WORKING LIGHT

To improve visibility in the dark.



TOWER LAMP

Tower lamp warns of any errors or dangers.



Configurations & Options



DIFFERENT ATTACHMENTS



Searcher hook



Luffing jib



Hydraulic jib + stinger



Glass manipulator



Grabber or beam manipulator

TWO POWER OPTIONS



Kubota diesel engine



Electric power pack

PULLEY BLOCK



HYDRAULIC EXTRA FUNCTIONS



WINTER KIT



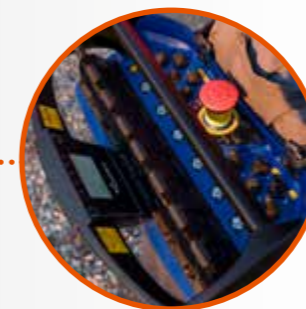
VISUAL ANGLE INDICATOR (VAI)



PERSONALIZED COLOR



RADIO REMOTE CONTROL WITH DISPLAY + 2 BATTERIES



LOW MARKING WHITE TRACKS



EXTENDABLE TRACKS (EXT)





SPX527 • SPX1040 • SPX1275



SPX527

max 2700 kg

4150 x 1100 x 1960 mm

max 18.3 m

max 11.2 m

Whether it is a small job or a big construction site, the SPX527 is the mini crane par excellence: Reliable and safe, it adapts to any kind of job.



Technical Information

Dimension	L x W x H	4150 x 1100 x 1960 mm
Stab Area		4160 x 4160 mm

		Kg
Crane & Options Weights	SPX527CDH	3600
	/	
	3T-D8	30
	PP400-4D PP220-4D	30
	JIB800G	55
	JIB600.2H	210
MR800.4	230	
JIB301GR	200	
JIB302GR	210	

SPX527CDH	Diesel Engine	KUBOTA D11 05-E3B	18.7 kW 25 Hp
-----------	---------------	-------------------	------------------

Speed		2 km/h
-------	--	--------

Gradeability		25°
--------------	--	-----



Electric Power Pack

AUX	4 kW - 3F 400 VAC 50 Hz
AUX	4 kW - 1F 110 VAC 60 Hz

Max. Track Load

	0.53 kg/cm²
--	-------------

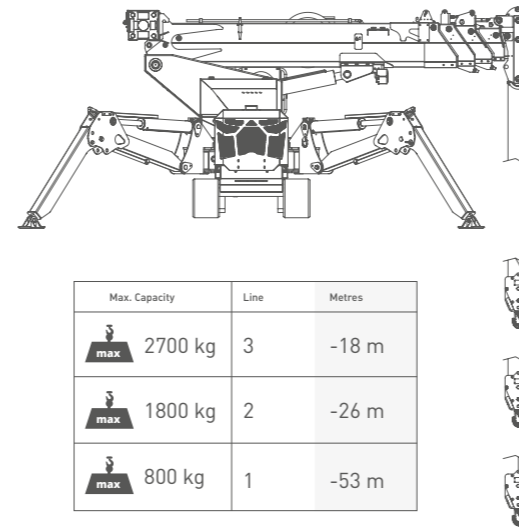
Max. Outrigger Load

MAX	2700 kg
-----	---------

Winch & Fall Stages

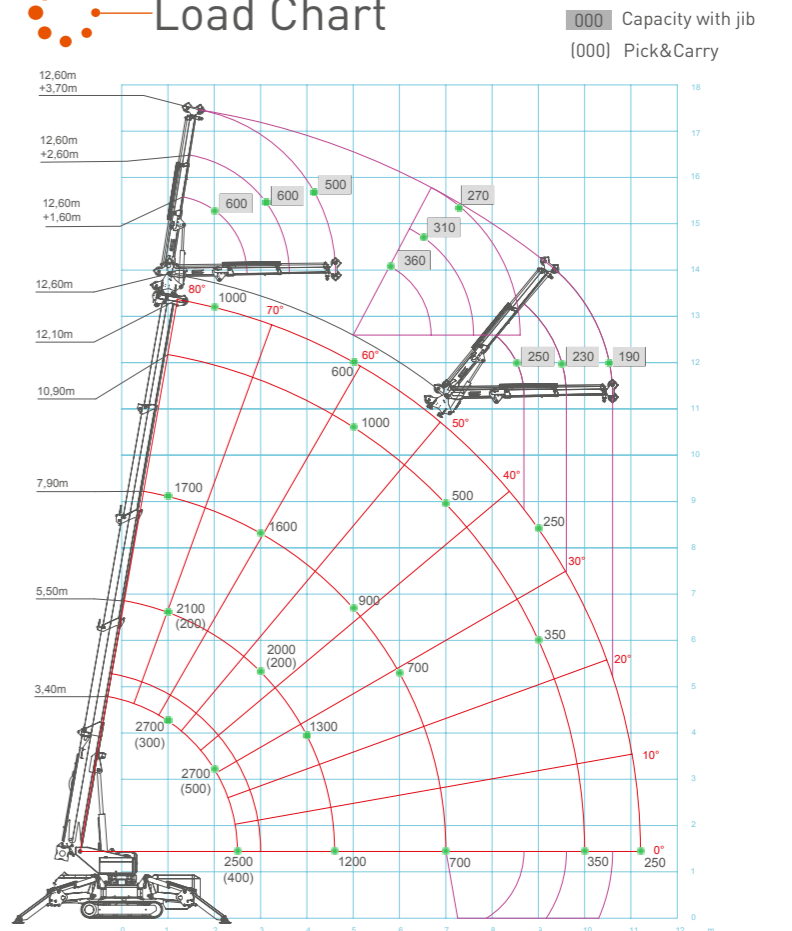
Main Winch

900 kg
60 m - Ø 8 mm
40,6 m/min.

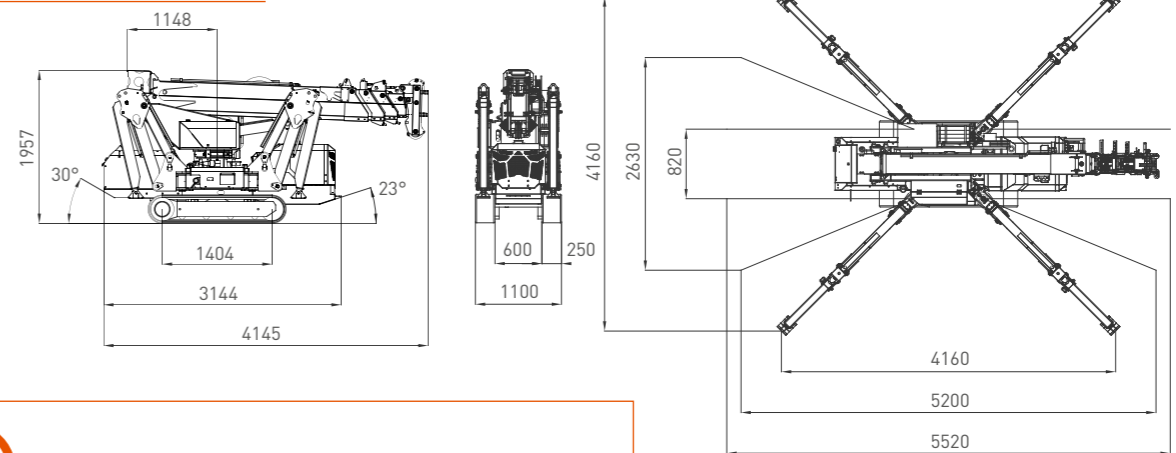


Max. Capacity	Line	Metres
max 2700 kg	3	-18 m
max 1800 kg	2	-26 m
max 800 kg	1	-53 m

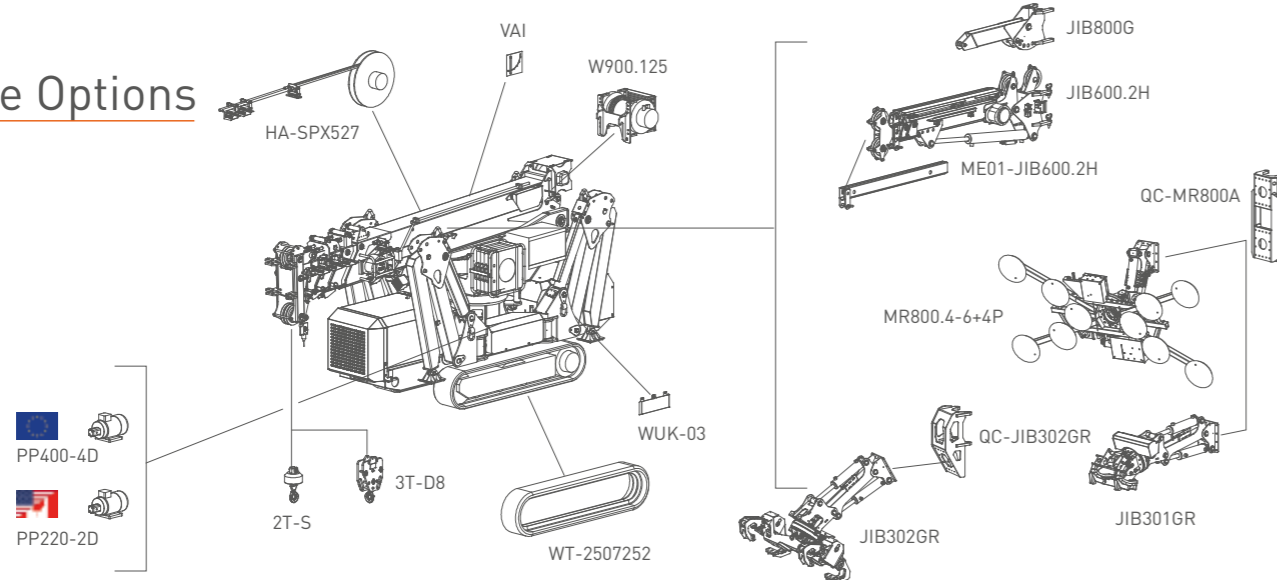
Load Chart



Dimensions



Crane Options



- A2B
- BPI
- CCI
- DTC
- EKT
- GSC
- LMI
- P&C
- PPA
- SCI
- TH
- VW
- RCD
- 2SW
- 2ST

Tools Configurations

	JIB800G	JIB600.2H*	MR800.4-6+4P	JIB301GR	JIB302GR
max	800 kg	600 kg	800 kg	300 kg	300 kg
max	800 kg @ 13.5m	500 kg @ 17.5 m	400 kg @ 14 m	300 kg @ 15 m	300 kg @ 15 m
max	250 kg @ 11 m	190 kg @ 10.5 m	150 kg @ 9 m	300 kg @ 8 m	300 kg @ 8 m

* Manual extension (stinger) available

SPX1040

max 4000 kg

max 5390 x 1450 x 2040 mm

max 23.5 m

max 14.5 m

The crane that made us famous worldwide.
A guarantee of success and performance for a mini crane that made Jekko's history.



Technical Information

Dimension	L x W x H	5390 x 1450 x 2040 mm 5390 x 2050 x 2040 mm (EXT TRACKS)
Stab Area		4200 x 4200 mm

		Kg
Crane & Options Weights		5600
		760
		40
		120
		140
		70
		220
	JIB1000.FL	310
	MR800.4	250
	JIB300GR	300

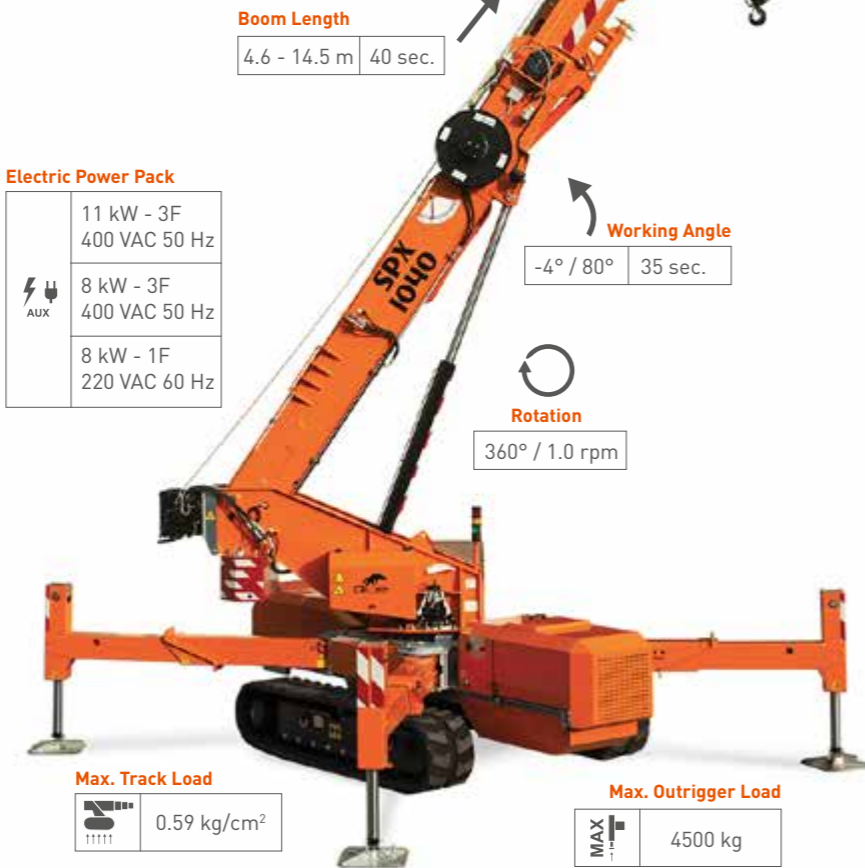
SPX1040CDH-1	Diesel Engine	KUBOTA D1105-E3B	18.5 kW 25.0 Hp
	Diesel Engine	KUBOTA V1505-E3B	26.2 kW 35.0 Hp

Speed		2.0 km/h
-------	--	----------

Gradeability		25°
--------------	--	-----

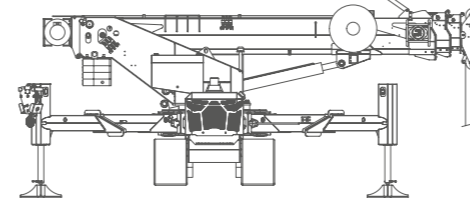
Ext. Tracks		1450-2050 mm
-------------	--	--------------

SPX1040CDH-1: no ext tracks
SPX1040CDH-2: ext tracks included



Winch & Fall Stages

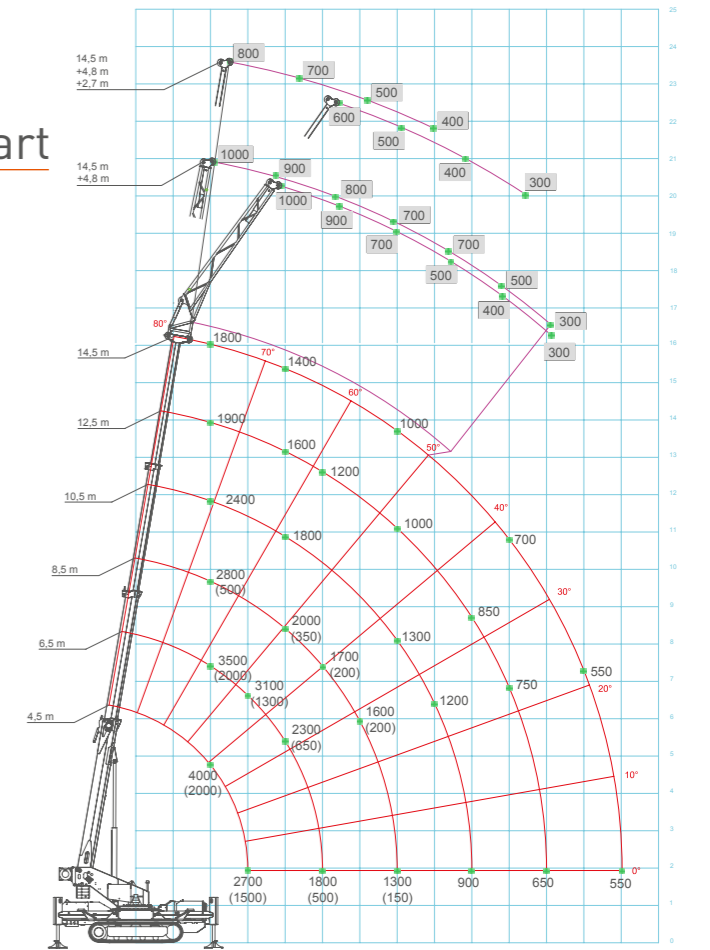
	Main Winch	1000 kg 125 m - Ø 8 mm 50,6-94,6 m/min.
--	------------	---



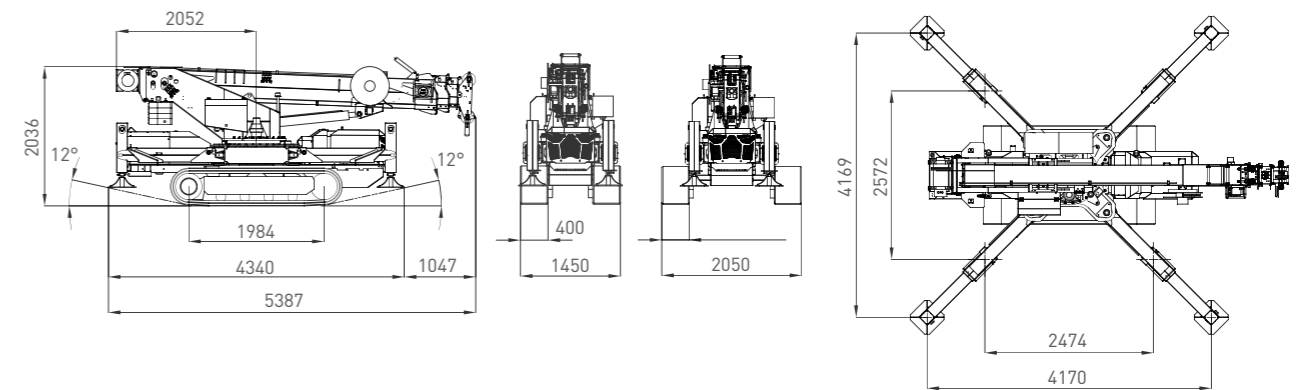
Max. Capacity	Line	Metres
4000 kg	2	-30 m
3000 kg	3	-37 m
2000 kg	2	-52 m
1000 kg	1	-116 m

Load Chart

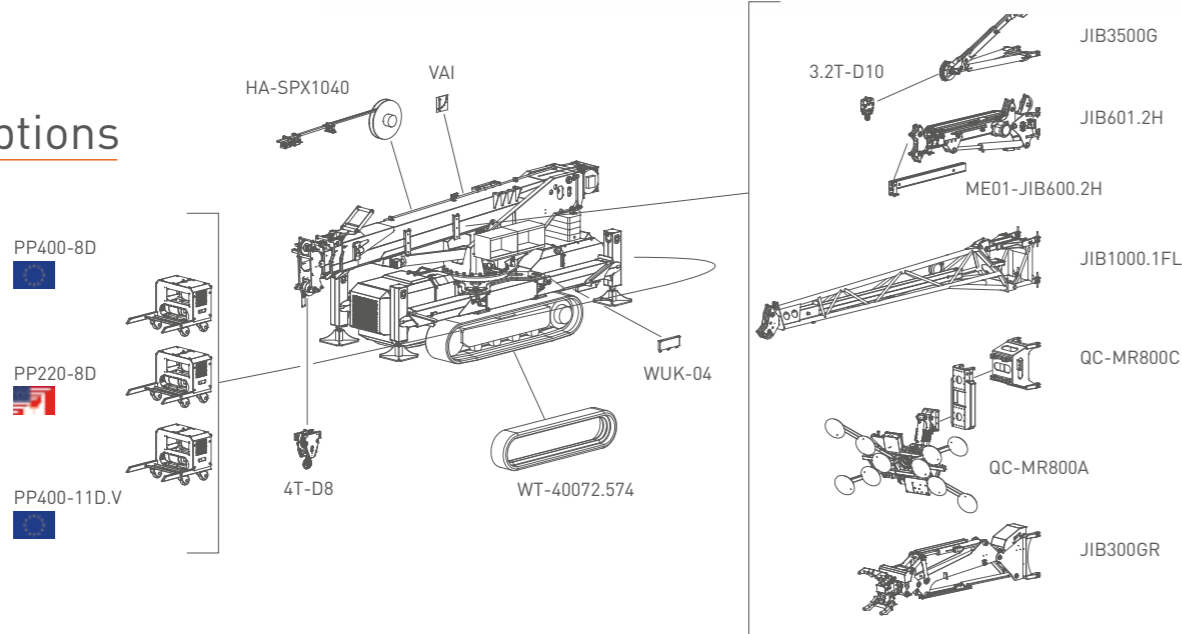
000 Capacity with jib
(000) Pick&Carry



Dimensions



Crane Options



- A2B
- BPI
- CCI
- DTC
- EKT
- GSC
- LMI
- P&C
- PPA
- SCI
- TH
- VW
- RCD
- 2SW
- 2ST

*For SPX1040CDH-2 only

Tools Configurations

	JIB3500G	JIB1000.FL	JIB601.2H*	MR800.4-6+4P	JIB300GR
	3500 kg	1000 kg	600 kg	800 kg	300 kg
	1600 kg @ 17,5 m	800 kg @ 23.5 m	500 kg @ 20.5 m	800 kg @ 18 m	300 kg @ 19 m
	300 kg @ 14.5 m	300 kg @ 11 m	110 kg @ 13 m	250 kg @ 13 m	300 kg @ 13 m

Based on SPX1040CDH-2

* Manual extension (stinger) available

SPX1275

max 7500 kg

5730 x 1450 x 2040 mm

max 26.5 m

max 20.0 m

Reduced stabilization area, 7,5 T max capacity, 27,5-metres max working height, 2 T pick & carry: a mini crane with unique features which make it incomparable on the market.



Technical Information

Dimension	LxWxH	5730 x 1450 x 2040 mm 5730 x 2050 x 2040 mm (EXT TRACKS)
Stab. Area		4600 x 4600 mm

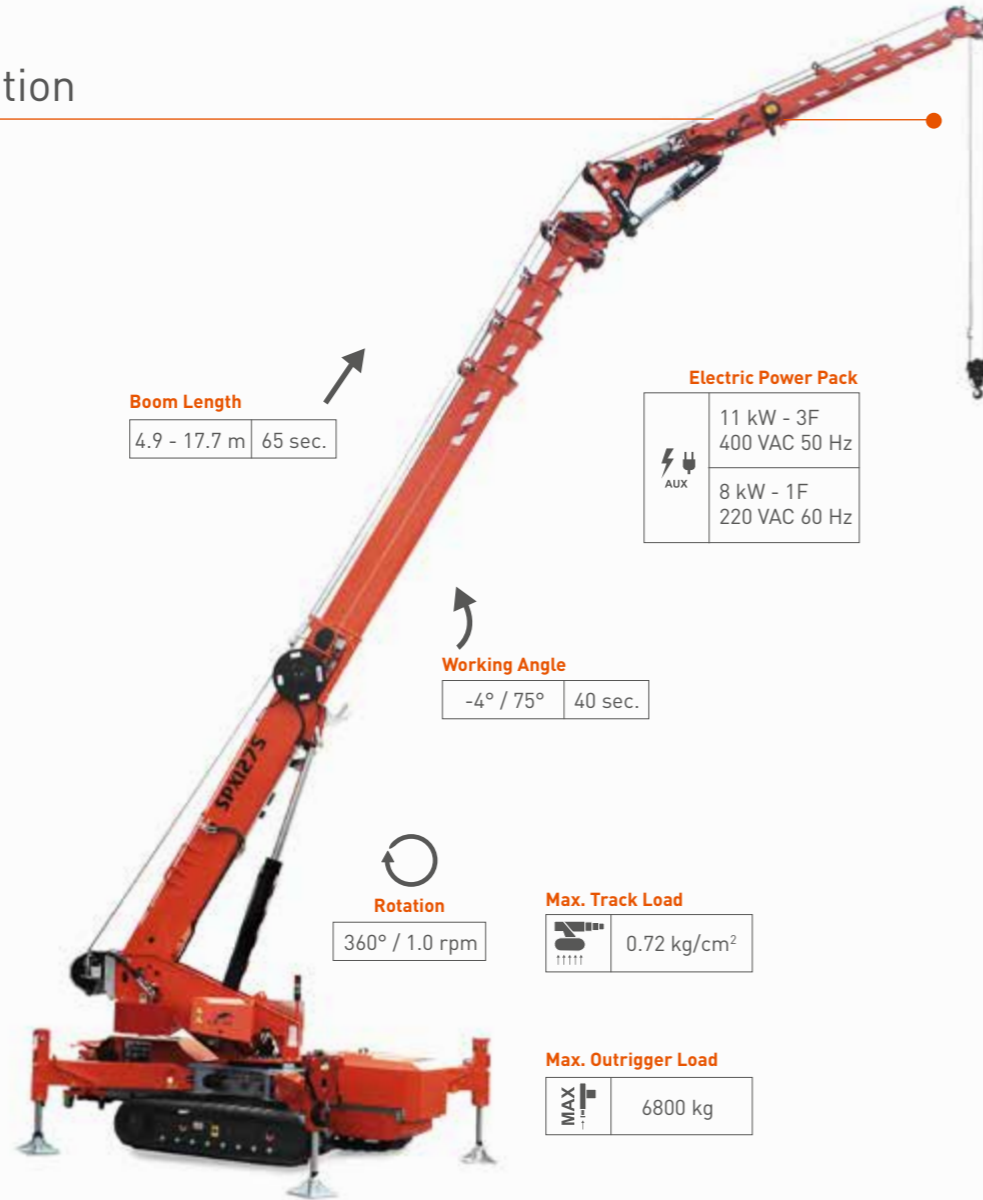
		Kg
Crane & Options Weights	SPX1275CDH-2	6800
	/	1500
	8T-D10	60
	PP400-8D PP220-8D	120
	PP400-11DV	140
	JIB3500G JIB1500.3HL JIB1500.1FL JIB300GR	70 670 310 300

SPX1275CDH-2	Diesel Engine	KUBOTA V1505-E3B	26.2 kW 35.0 Hp
--------------	---------------	------------------	--------------------

Speed		1.6/3.1 km/h
-------	--	--------------

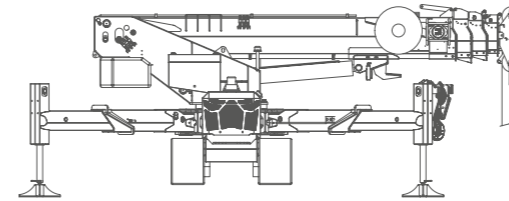
Ext. Tracks Gradability		20°
-------------------------	--	-----

Ext. Tracks		1450-2050 mm
-------------	--	--------------



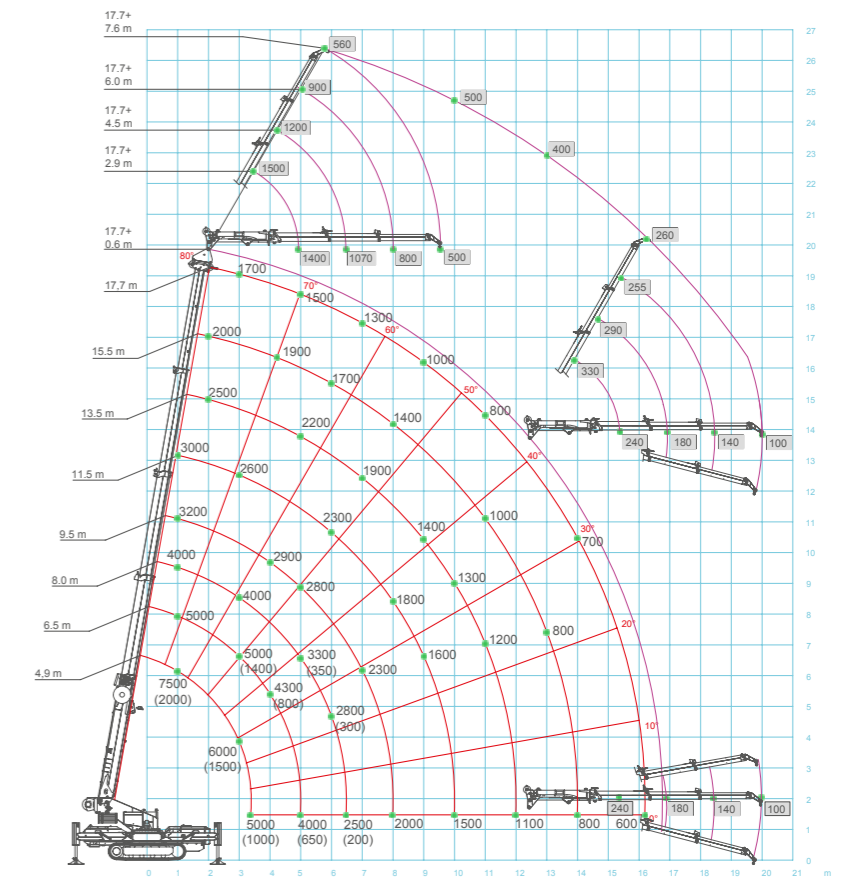
Winch & Fall Stages

Main Winch	1500 kg 125 m - Ø 10 mm 63,8-115,1 m/min.
------------	---

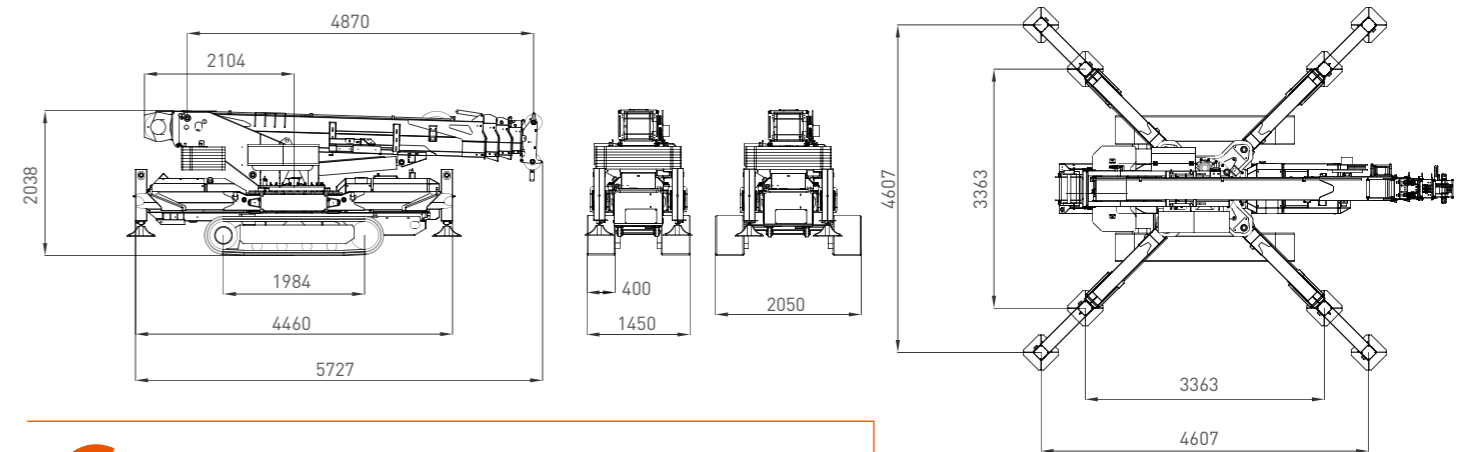


Max. Capacity	Line	Metres
max 7500 kg	5	-23 m
max 6000 kg	4	-29 m
max 4500 kg	3	-37 m
max 3000 kg	2	-52 m
max 1500 kg	1	-116 m

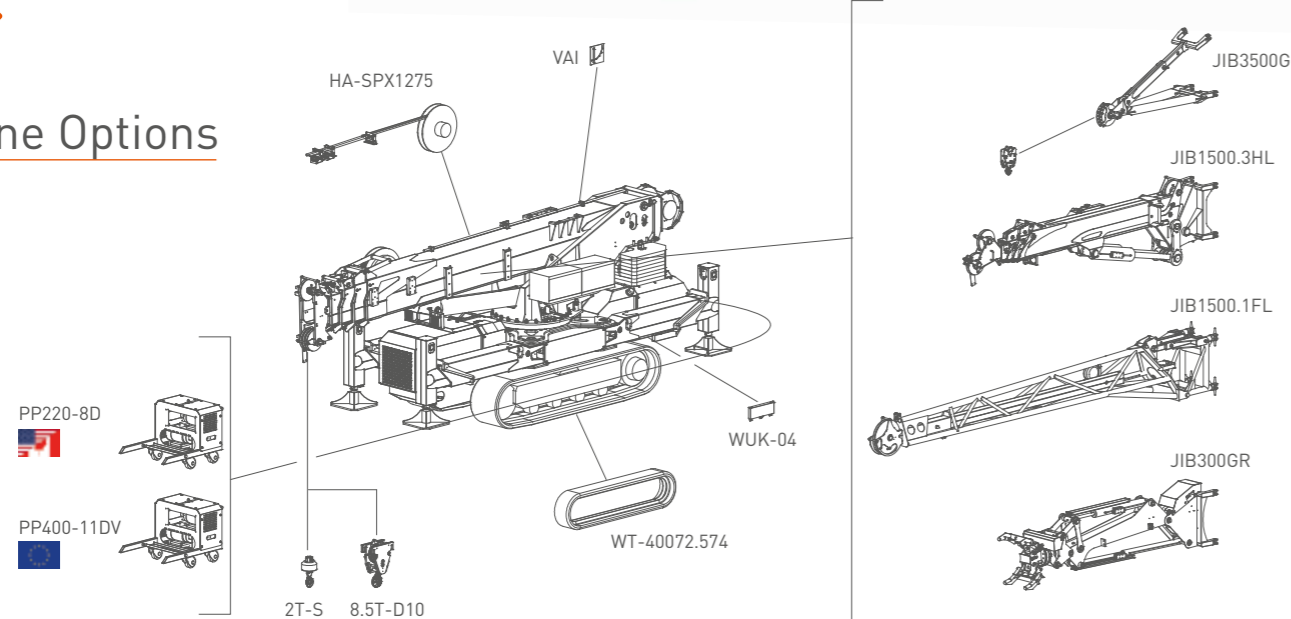
Load Chart



Dimensions



Crane Options



- A2B
- BPI
- CCI
- DTC
- EKT
- GSC
- LMI
- P&C
- PPA
- SCI
- TH
- VW
- RCD
- 2SW
- 2ST

Tools Configurations

	JIB3500G	JIB1500.FL	JIB1500.3H	JIB300GR
max	3500 kg	1500 kg	1500 kg	300 kg
max	1600 kg @ 20.5 m	900 kg @ 26 m	560 kg @ 26.5 m	300 kg @ 22 m
max	400 kg @ 17.5 m	200 kg @ 16 m	100 kg @ 20 m	300 kg @ 16 m

Based on SPX1275CDH-2



S Symbols

Extendable tracks Cingoli estensibili Ausdehbare Raupen Cingulos extensibles Chenilles extensibles	Electrical system Impianto elettrico Elektrische Anlage Sistema eléctrico Circuit électrique	Boom Slewing Rotazione braccio Auslegerdrehung Giro Rotation rallonge	Max reach Sbraccio massimo Max. Reichweite Alcance máximo Extension maximale du bras	Gradeability Pendenza superabile Steigfähigkeit Grado de inclinación Aptitude en pente	Main winch Argano principale Haupthubwerk Huinche principal Trevil principal	Tilting angle Angolo di inclinazione Auslegerverstellwinkel Angulo de inclinación Angle flèche	Slewing Rotazione Drehwerk Rotación Rotation	Liquid cooling Raffreddamento liquido Flüssigkeitskühlung Enfriamiento del líquido Refrondissement liquide
Crane Gru Kran Grua Grue	Auxiliary power pack Elettropompa ausiliaria Zusatzpumpe Electrobomba auxiliar Electropompe auxiliaire	Basket rotation Rotazione Cestello Korb-schwenkung Rotación carretilla Rotation nacelle	Max height Altezza massima Max. Höhe Altura máxima Hauteur maximale	Max outrigger load Stabilizzatori Abstützungen Estabilizadores Stabilisateurs	Jib - prolunga Auslegerverlängerung Jib prolongación Flèche	Rotation angle Angolo di rotazione Drehwinkel Angulo de rotación Angle de rotation	Building site use Utilizzo in cantiere Gebrauch auf Baustelle Utilización en el sitio Utilisation sur le site	Hookblock / Capacity Gancio / Capacità Hakenflasche / Traglast Utilización en el sitio Utilisation sur le site
Dimensions Dimensioni Abmessungen Dimensiones Dimensions	Travel speed Velocità di traslazione Fahrgeschwindigkeit Velocidad de desplazamiento Vitesse de déplacement	Number of pads Numero di ventose Anzahl der Saugteller Número de ventosas Nombre de ventouses	Opened lifting beam Bilanciere aperto Geöffnet Traverse Balancine de carga abierto Balancier ouvert	Max track loading Pressione al suolo Bodendruck Presion de apoyo Pression au sol	Engine Motore Motor Moteur	Slewing angle Angolo di rotazione Schwenkwinkel Angulo de rotación Angle de rotation	Manipulator Manipolatore Manipulator Manipulateur	Unleaded petrol fuel Alimentazione benzina senza piombo Benzinversorgung, bleifrei Alimentación gasolina sin plomo Alimentacion essence sans plomb
Weight Peso Gewicht Peso total Poids	Boom lifting Elevazione braccio Wipwerk Elevación de pluma Levage	Pad diameter Diámetro ventosa Saugtellerdurchmesser Diámetro ventosa Diamètre ventouse	Closed lifting beam Bilanciere chiuso Geschlossen Traverse Balancine de carga cerrado Balancier fermé	Maximum SWL Portata massima Max. Tragfähigkeit Carga máxima Portée max.	Rope length Lunghezza fune Seillänge Longitud de la cuerda Longueur câble	Vertical lifting Sollevamento verticale Vertikaler Hub Elevación vertical Élévation verticale	Stabilization area Area di stabilizzazione Abstützung A'area de estabilización Zone de stabilisation	Air cooling Raffreddamento ad aria Luftkühlung Enfriamiento del aire Refrondissement air
Counterweight Contrappeso Gegengewicht Contrapeso Contrepoids	Boom telescoping Lunghezza braccio Teleskopierlänge Brazo telescópico Télescopage flèche	Max working height Massima altezza di lavoro Max. Arbeitshöhe Altura máxima Hauteur max. de travail	Diesel fuel Alimentazione Diesel Dieselversorgung Alimentación Diesel Alimentacion Diesel	Piston Pistone Kolben Pistón Piston	Power Potenza Leistung Potencia Puissance	Horizontal lifting Sollevamento orizzontale Horizontaler Hub Elevación horizontal Élévation horizontale		
Factory use Utilizzo in fabbrica Gebrauch in Werkhalle Utilización en la fábrica Utilisation dans l'usine	Maxworking radius Massimo raggio di lavoro Max. Reichweite Rayo máximo de trabajo Rayon max. de travail	Factory use Utilizzo in fabbrica Gebrauch in Werkhalle Utilización en la fábrica Utilisation dans l'usine						

A Acronyms

A2B Anti Two Block	GSC Geometrical Stability Control	TH Tilting Head	BPI Boom Pressure Indicator	PPA Plug & Play Attachment	2SW Two Speed Winch	DTC Diagnostic Trouble Code	VW Virtual Wall
EXT Extendable Tracks	SCI Stability Control Indicator	2ST Two Speed Tracks	LMI Load Moment Indicator	RCD Radio Control Display	CCI Crane-Carrier Interlock	P&C Pick & Carry	

Notes: All specifications and features herein described can be changed without prior advice. All indicated data are indicative only and are not binding as crane performs differently depending on its use.

Note: Tutte le caratteristiche e le specifiche descritte possono essere soggette a variazioni senza preavviso. Tutti i dati riportati sono forniti a puro titolo informativo e non sono impegnativi dal momento che le prestazioni della macchina variano in funzione dell'utilizzo.

Hinweise: Unangekündigte Änderungen sämtlicher Eigenschaften und Daten sind möglich. Alle Angaben sind Richtwerte und nicht verbindlich da die Leistungen der Vorrichtung von deren Einsatz abhängen.

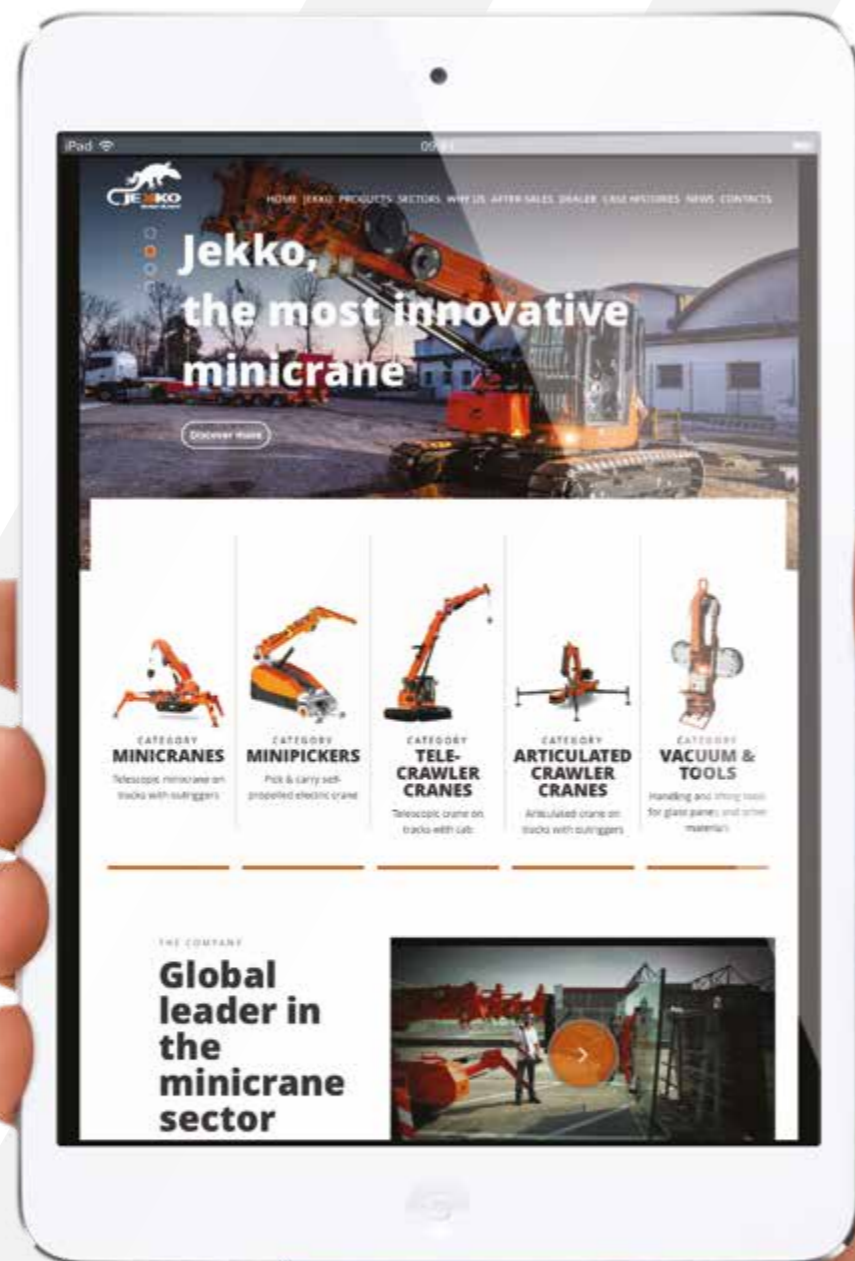
Notas: Todas las características y las especificaciones aquí indicadas pueden ser sujetas a variaciones sin aviso. Se dan todos los datos aquí indicados como simples informaciones. No se consideran como vinculantes, dado que las prestaciones del maquinario pueden variar.

Notes: Toutes les caractéristiques et le spécifications descriptives peut être sujet à variation sans préavis. Tout les données rapportés sont fourni à titre informatif et ne sont pas engager au moment que la prestation de la machine change en fonction de l'emploi.



www.jekko.it

Visit **jekko.it** to keep in contact with us, discover all the latest news and find out technical details of all our products.





Jekko srl

Via Campardone, 1 - 31014 Colle Umberto (TV) Italy
info@jekko.it - www.jekko.it