



Product Catalog

SPB209 • SPX312 • SPX424

The Company



Jekko is a world leading manufacturer of minicranes with more than 45 years of experience in the lifting and handling sector. The company is headquartered in the province of **Treviso**, occupying a **17,000 sq. m.** industrial estate – 7,000 of which are indoors. The entire range of **Jekko minicranes is exported and traded all over the world by a network of more than 30 authorised dealers.** Our products are engineered to meet our customers' specific requirements and are designed to **operate in narrow places where space is restricted.** Depending on the model, their **compact size** allows passage through a standard or double doorway. But their modest weight and slim dimensions come with no compromise to **lifting capacity** or **working range**, resulting in substantial

operational benefits both indoors and outdoors. Jekko offers a complete line of **models equipped with diesel engine, electric motor or battery pack** and a wide range of **attachments including hook or hydraulic jibs, grabber manipulators for pipes and beams, vacuum lifters for glass panes as well as lifting beams.** All tools are fully integrated with the functions and safety devices of the base machine. Jekko has always invested in **R&D**, safety and compliance with all relevant regulations – in particular with the **EN 13000** standard – to **offer its customers innovative and safe products.** Jekko is a young business, supported by a professional technical department, reliable training and **after-sales services**, and a sales & marketing office covering all international markets.



PRODUCTS

Jekko minicranes are safe and technologically advanced; payback on a minicrane is immediate in the case of a sale and achieved in the short term in the case of rental.



WORK TEAM

Jekko consists of a young and highly-qualified team whose innovative mindset and enthusiasm for continuing professional development are one of the company's flagship assets.



MADE IN ITALY

From design to assembly, as well as components and suppliers, all our products are 100% Made in Italy.



INTERNATIONAL NETWORK

Jekko is present in the five continents through its network of more than 30 authorised dealers.



AFTER-SALES SERVICE

Jekko's prompt and reliable after-sales operation offers an online service for spares and warranty management and a training department for technical courses.



INNOVATION

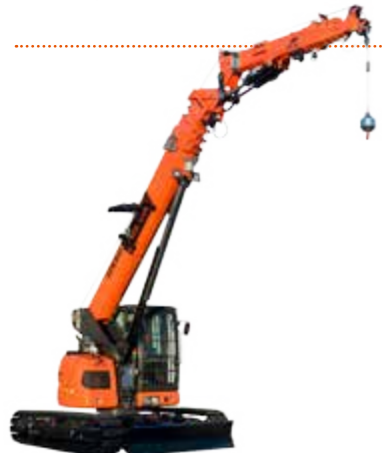
Jekko products take innovation to the limit, with exhaustive research and engineering and a thorough understanding of market needs.





MINICRANES

Six different telescopic mini crawler crane models with outriggers – designed for easy transport and ultimate versatility. These machines can work in all kinds of places – slopes, stairs, passageways and hard-to-reach places – and they are quick to set up.



TELE-CRAWLER CRANES

Jekko produces the only mini crawler crane on the market with an operator's cab and luffing capability thanks to its hydraulic articulated jib. It also has all the most advanced technological innovations that crane owners have come to expect: radio remote control, extendable tracks, option of diesel engine or electric motor, 3 T pick & carry capacity, hydraulic jib reaching 27.5 m and more than 50 configurations available.



JF SERIES ARTICULATED CRAWLER CRANES

This model, combining an articulated truck-loader crane on a self-propelled crawler chassis, offers a glimpse of the future of crawler cranes.

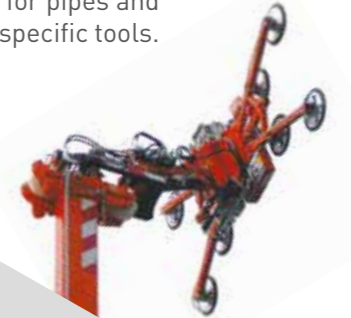
MINIPICKERS

Minipickers are our pick & carry self-propelled electric cranes powered by a battery and radio-remote controlled. They are well suited to working in warehouses or where access is difficult for other cranes, especially where heavy loads need to be carried through doorways. Minipickers can also be used with Jekko hydraulic manipulators or vacuum lifters for handling and positioning glazing or curtain walling.



VACUUM & TOOLS

Lifting and handling tools for glass panes and other materials. This family of products includes hydraulic or battery-powered manipulators, vacuum lifters for glass-pane handling, grabber manipulators for pipes and beams and other specific tools.



All our cranes are designed to operate in narrow places where space is restricted. Our ongoing R&D activity has brought these machines into many sectors of industry.

Sectors of application



Glass pane handling

Installation of glazing and curtain walling on buildings and skyscrapers, handling glass panes and non-porous materials using hydraulic manipulators and vacuum lifters integrated with our cranes.



Constructions & Building

All kinds of building work, from housing to civil engineering.



Mining, oil, nuclear, chemical, drilling and military sectors

These specific fields demand the highest standards in terms of accuracy, light-weight tools and handiness: that's exactly what Jekko minicranes offer.



Industrial maintenance

Indoor and outdoor industrial maintenance: shopping malls, ships, museums, schools, hospitals, exhibition halls as well airports, sports grounds, roads, leisure parks, graveyards, houses, railways, etc...



... and others

With its entrepreneurial flair, Jekko has introduced the mini crane concept to all kinds of niche applications, including cinema, advertising, product promotion, airspace, luxury, etc...

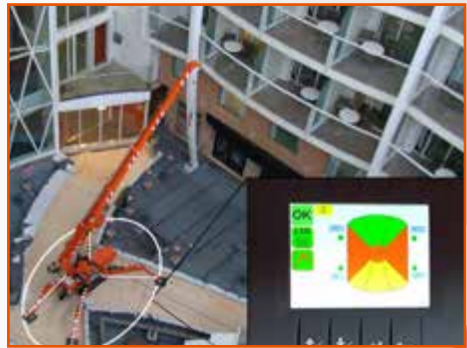
Our Strengths



GEOMETRICAL STABILITY CONTROL

- ✓ Outriggers multi-position and angle
- ✓ Automatic load of working area
- ✓ Different working area:
 - Red - 0%
 - Grey - pick&carry
 - Yellow - 50%
 - Green - 100%

1



PLUG&PLAY SYSTEM CONTROL

- All accessories and tools:
- ✓ Integrated with the crane
 - ✓ Immediately recognized by the software
 - ✓ With a single radio remote control (same of the crane)

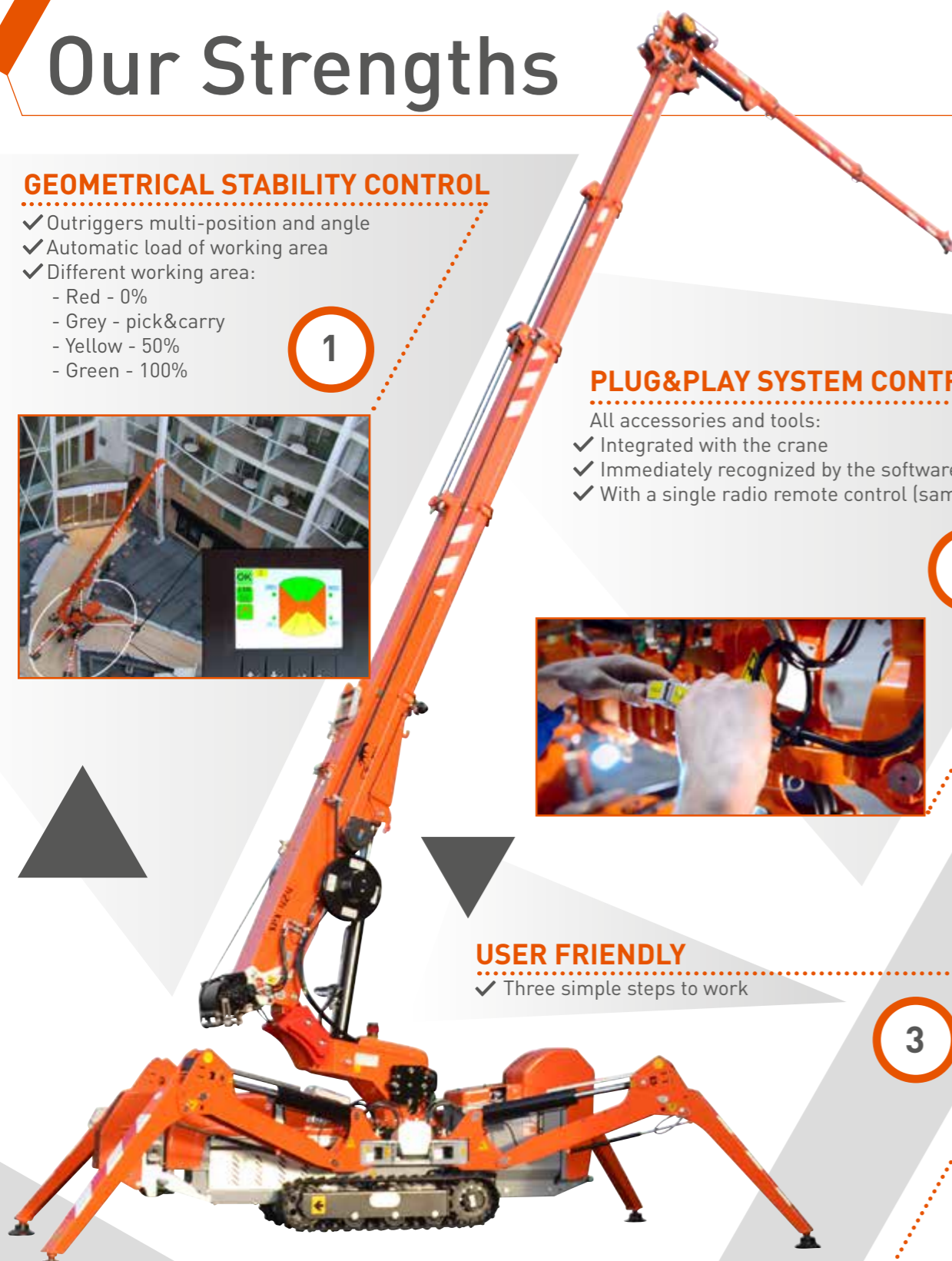
2



USER FRIENDLY

- ✓ Three simple steps to work

3



Switch on



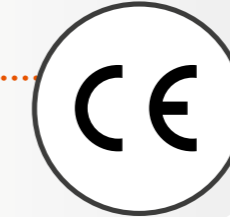
Confirm



Work

SAFEST CRANE ON THE MARKET

- ✓ In compliance with EN 13000
- ✓ C.E. Certified
- ✓ Overload Data Recording



4

PROFESSIONAL RADIO REMOTE CONTROL

- ✓ Proportional
- ✓ Multi-functional (up to 3 movements)
- ✓ LCD Display

5



DIFFERENT ATTACHMENTS

- ✓ Three different JIBS
- ✓ Different tools completely integrated and radio remote controlled: glass manipulator, pipe manipulator, hydraulic fork...
- ✓ The SPX 424 is the only mini crane on the market that is small enough to pass through a single door and also has an hydraulic jib

6



GLASS MANIPULATOR



SEARCHER HOOK



MANUAL JIB



HYDRAULIC JIB

7

EXTENDABLE TRACKS

- ✓ Better maneuverability
- ✓ Improved ground clearance



Standard Equipment



ANTI TWO BLOCK (A2B)

It prevents the hook from being pulled against the boom end.

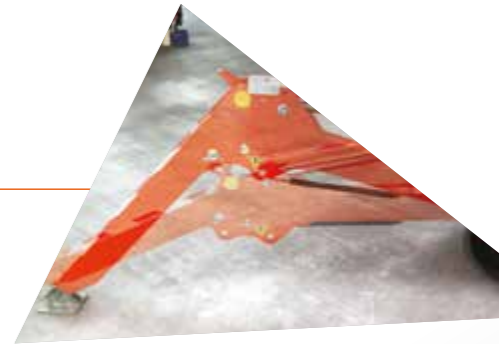
BUBBLE LEVEL

To verify the correct stabilization of the crane.



TRANSPORTATION ANCHOR POINTS

Anchor points to lift and transport the crane.



CRANE-CARRIER INTERLOCK (CCI)

This system interlocks the functions of the crane and of the carrier. When the boom is stowed, outriggers and tracks can be operated but the boom can be operated only when the machine is stabilized.

DOUBLE OUTRIGGER LEG POSITION

Double inclination of the outriggers to allow different areas of stabilization.

SOFTWARE

It manages and controls all functions of the machine, thus ensuring maximum safety.



WINCH

- ✓ To reach all the load capacities by means a rope and a pulley system
- ✓ Long rotation-resistant ropes
- ✓ 2-speed winches



SINGLE LINE HOOK

Swivel overhaul ball



DIAGNOSTIC TROUBLE CODE (DTC)

It sends a code that enables the operator or technician to identify any problem and solve it, thus making troubleshooting faster and easier.

TOWER LAMP

Tower lamp warns of any errors or dangers.



LED WORKING LIGHT

To improve visibility in the dark.



JIB HOOK OR WINCH MODE

Option of working with either the winch or hook.



Configurations & Options



DIFFERENT ATTACHMENTS



Searcher hook



Manual jib



Hydraulic jib



Glass manipulator

3 DIFFERENT POWER



Diesel or petrol engine



Lithium or standard battery



Electric power pack



PULLEY BLOCK



HYDRAULIC EXTRA FUNCTIONS



OUTRIGGERS MATS&TRAY



VISUAL ANGLE INDICATOR (VAI)



WINTER KIT



PERSONALIZED COLOR



RADIO REMOTE CONTROL WITH DISPLAY + 2 BATTERIES



LOW MARKING WHITE TRACKS



EXTENDABLE TRACKS (EXT)





SPB209 • SPX312 • SPX424



Technical Information

Dimension	L x W x H	2500 x 770 x 1600 mm
Stab Area		3000 x 3000 mm

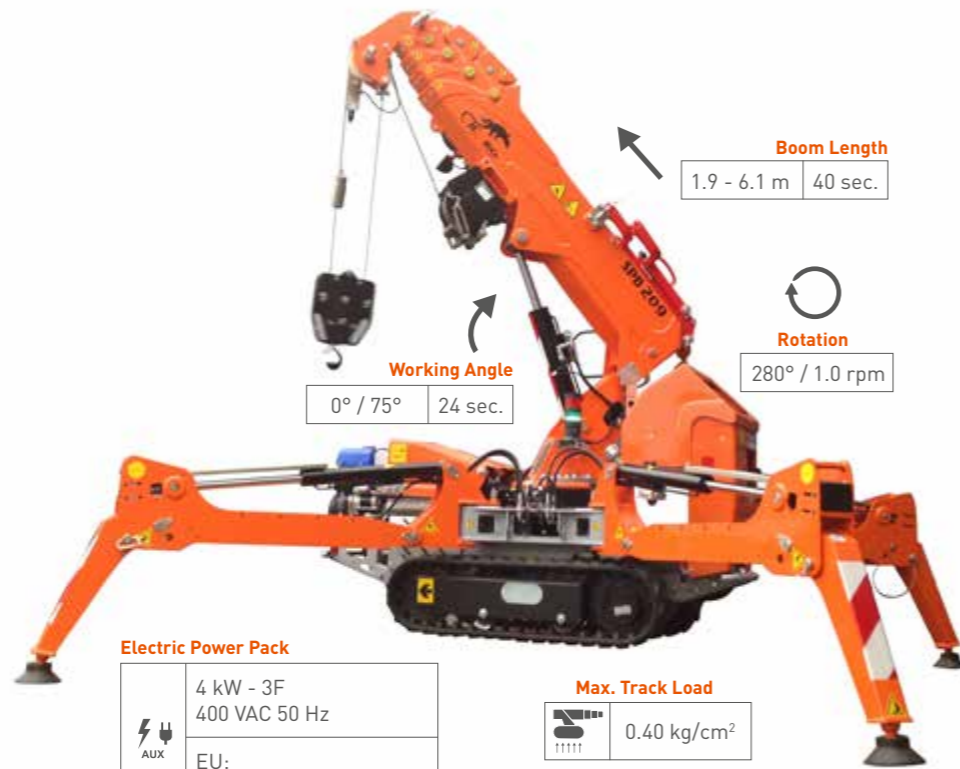
		Kg	
Crane & Options Weights		SPB209	1450
		/	
		2T-D7	20
		PP400-4DX PP220-4DX PP220-2DX	45
		JIB800GB	20

SPB209	Petrol Engine	YAMAHA MZ 360	7.6 kW 10.4 Hp
--------	---------------	---------------	-------------------

Speed		1.7 km/h
-------	--	----------

Gradability		20°
-------------	--	-----

Ext. Tracks		770-1060 mm
-------------	--	-------------



Electric Power Pack

	4 kW - 3F 400 VAC 50 Hz
	AUX: EU: 2 kW - 1F 220 VAC 50 Hz USA/CANADA: 4 kW - 1F 110 VAC 60 Hz

Max. Track Load

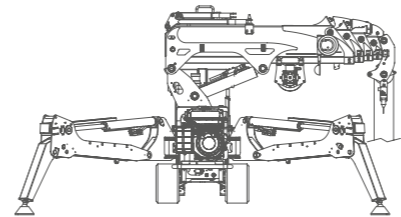
	0.40 kg/cm ²
--	-------------------------

Max. Outrigger Load

MAX	1050 kg
------------	---------

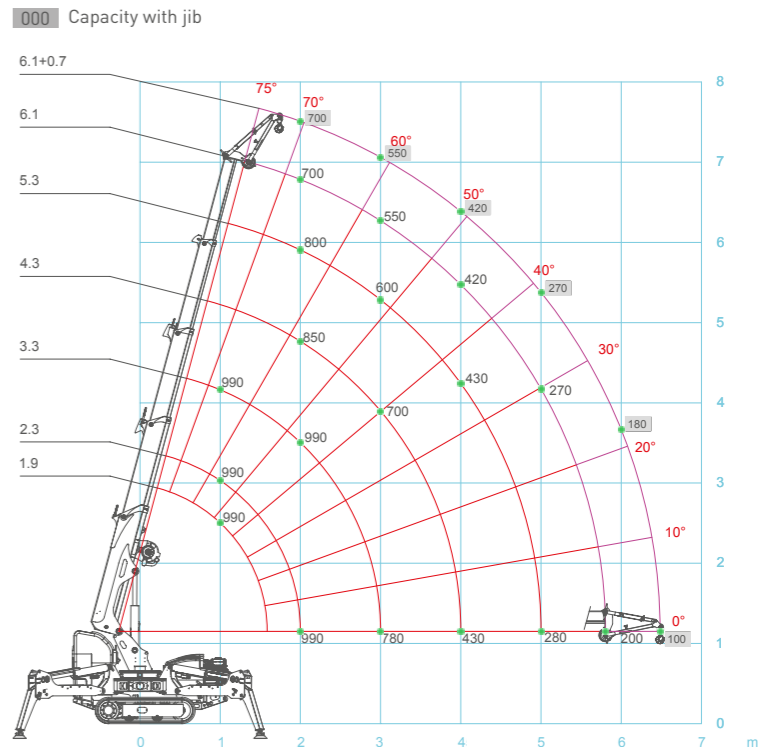
Winch & Fall Stages

	Main Winch	400 kg (Single line) 53 m - Ø 6 mm 15.1-31.8 m/min.
--	------------	---

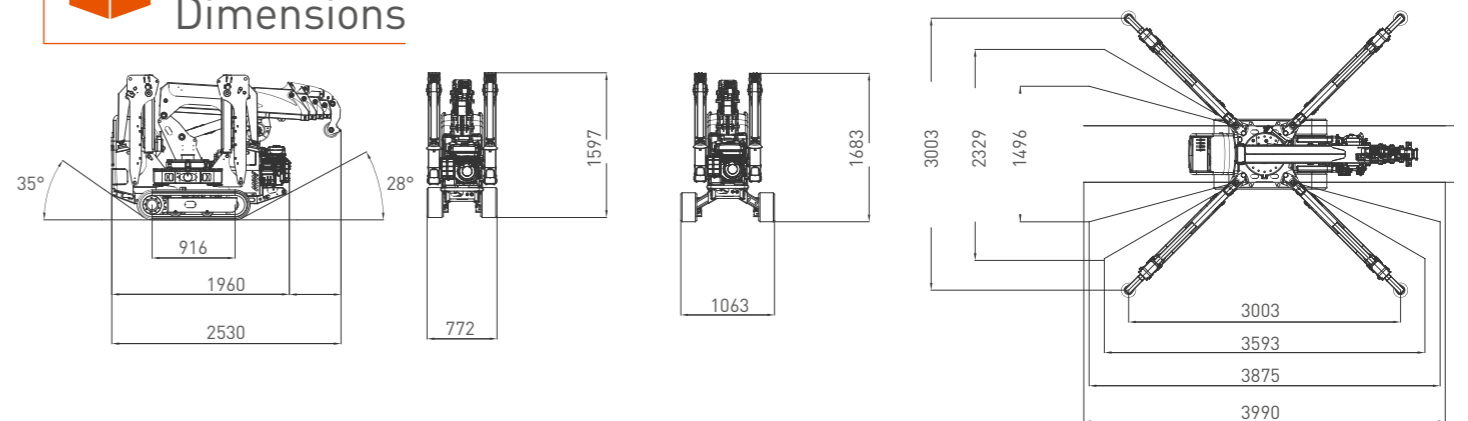


Max. Capacity	Line	Metres
	990 kg	2 -22 m
	495 kg	1 -46 m

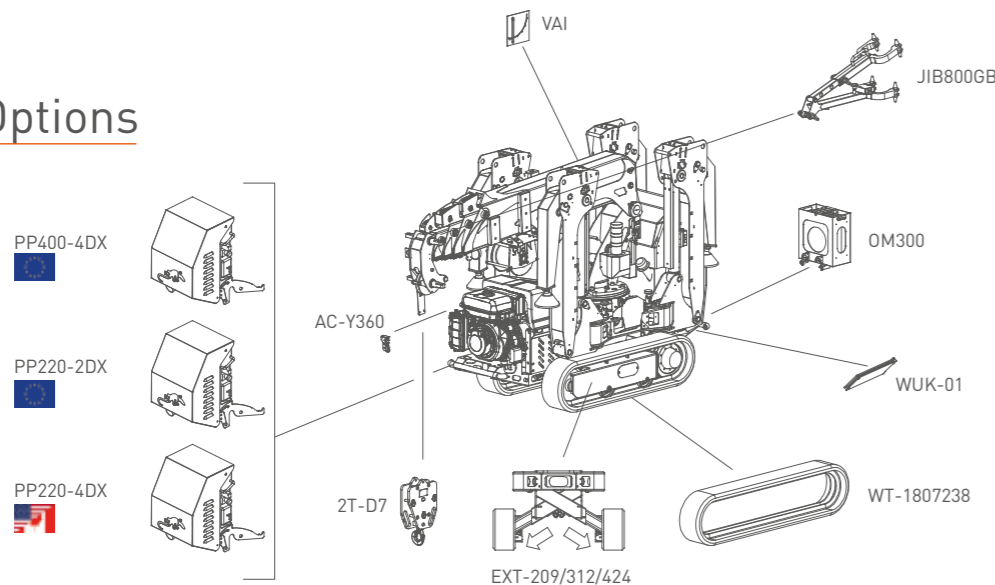
Load Chart



Dimensions



Crane Options



- A2B
- BPI
- CCI
- DTC
- EKT
- GSC
- LMI
- P&C
- PPA
- SCI
- TH
- VW
- RCD
- 2SW
- 2ST

Tools Configurations

JIB800GB	
	800 kg
	700 kg @ 7.5 m
	100 kg @ 6.5 m

SPX312

max 1200 kg

max 2790 x 770 x 1600 mm

max 10.5 m

max 9.5 m

The proper mini crane:
compact, easily maneuverable and versatile.
The perfect solution for any indoor job or to work in skyscrapers all over the world.



Technical Information

Dimension	LxWxH	2790 x 770 x 1600 mm
Stab Area		3700 x 3700 mm

		Kg	
Crane & Options Weights		SPX312CP	1800
		SPX312C+	1850
		2T-D7	20
		PP400-4DX PP220-4DX PP220-2DX	45
		JIB800GX	20
		JIB400.1MX	70
	MV600.3E+	180	

SPX312CP	Petrol Engine	YAMAHA MZ 360	7.6 kW 10.4 Hp
SPX312C+	Standard or Lithium Battery	N.4 BATTERIES 6V, 240Ah	4.0 kW 5.5 Hp

Speed		1.7 km/h
Gradability		20°
Ext. Tracks		770-1060 mm



Electric Power Pack

	4 kW - 3F 400 VAC 50 Hz
	EU: 2 kW - 1F 220 VAC 50 Hz USA/CANADA: 4 kW - 1F 110 VAC 60 Hz

Max. Track Load

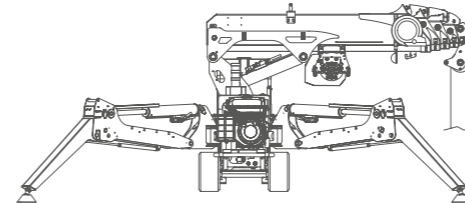
	0.44 kg/cm ²
--	-------------------------

Max. Outrigger Load

MAX	1850 kg
------------	---------

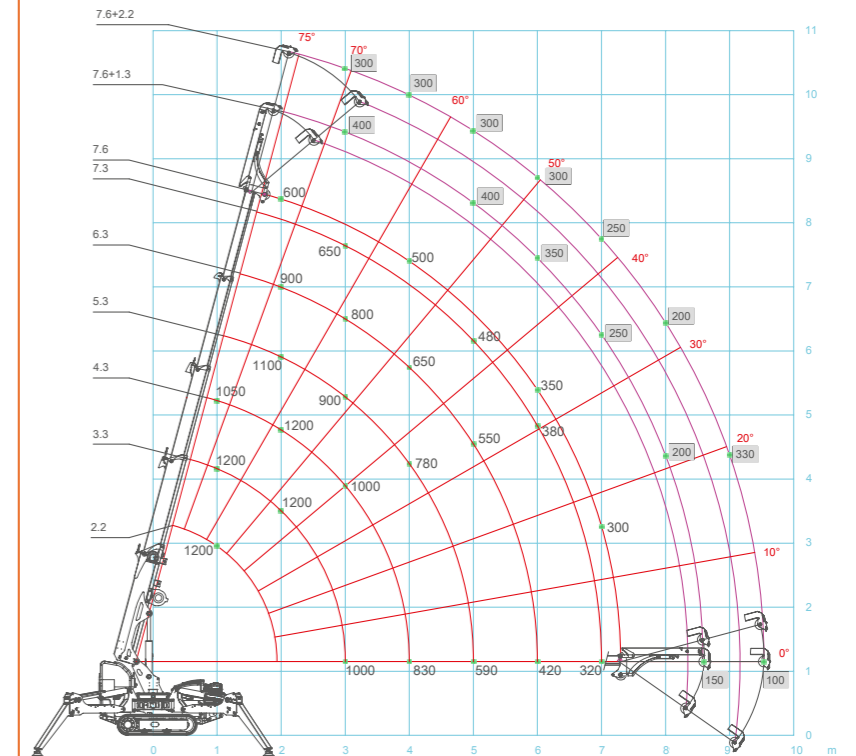
Winch & Fall Stages

	Main Winch	600 kg (Single line) 63 m - Ø 7 mm 15.1-31.8 m/min.
--	------------	---

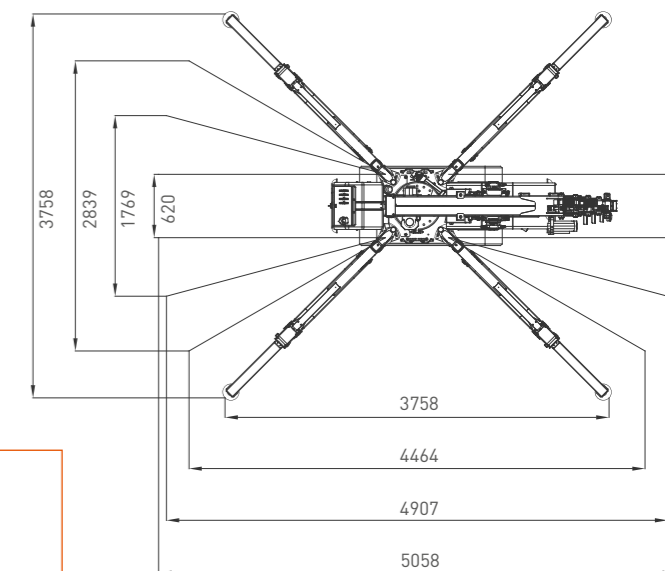
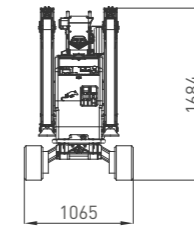
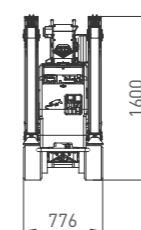
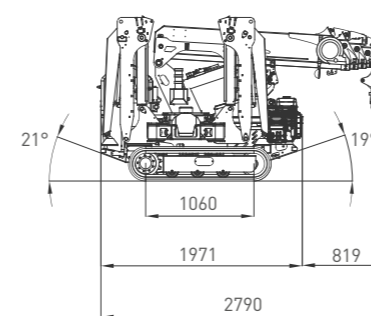


Max. Capacity	Line	Metres
1200 kg	2	-29 m
600 kg	1	-59 m

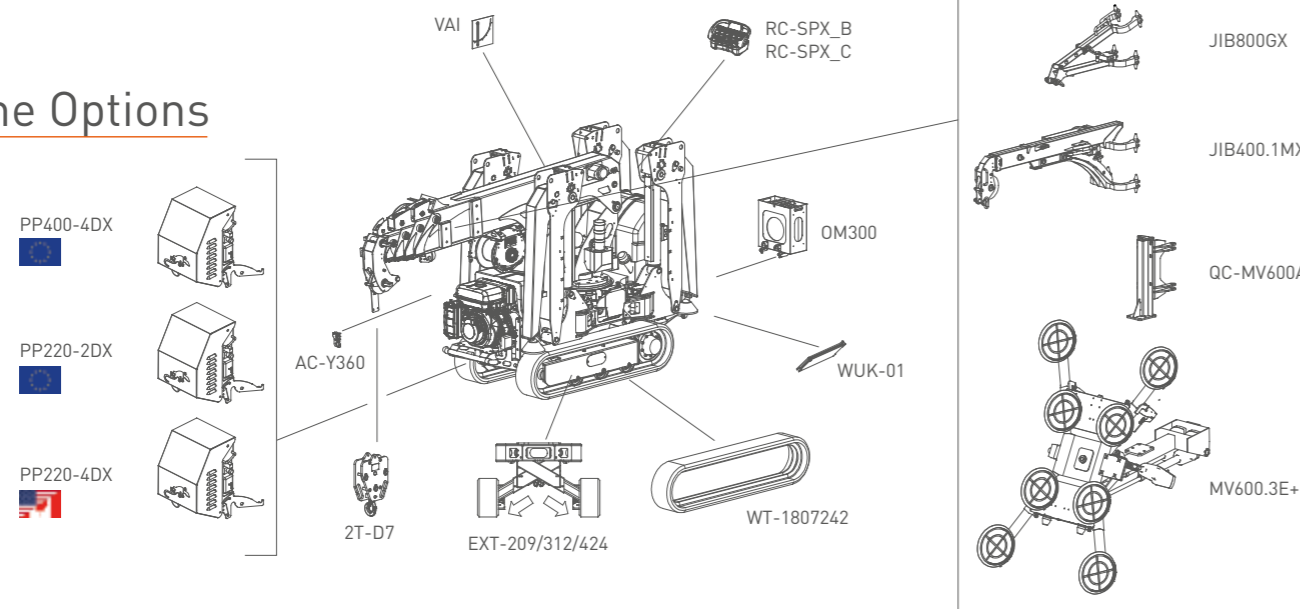
Load Chart



Dimensions



Crane Options



- A2B
- BPI
- CCI
- DTC
- EKT
- GSC
- LMI
- P&C
- PPA
- SCI
- TH
- VW
- RCD
- 2SW
- 2ST

Tools Configurations

	JIB800GX	JIB400.1M	MV600.3E+
	800 kg	400 kg	600 kg
	600 kg @ 9 m	300 kg @ 10.5 m	520 kg @ 9 m
	200 kg @ 8 m	100 kg @ 9.5 m	100 kg @ 8.5 m

SPX312S (SHORT BOOM)

LxWxH	2490 x 770 x 1600 mm
	1.9 - 6.1 m

SPX424

max 2400 kg

max 3150 x 780 x 1950 mm

max 15 m

max 12 m

The top of the range mini crane.
The most performing mini crane currently on the market.
Technology, innovation and reliability enclosed in the best-seller mini crane ever.



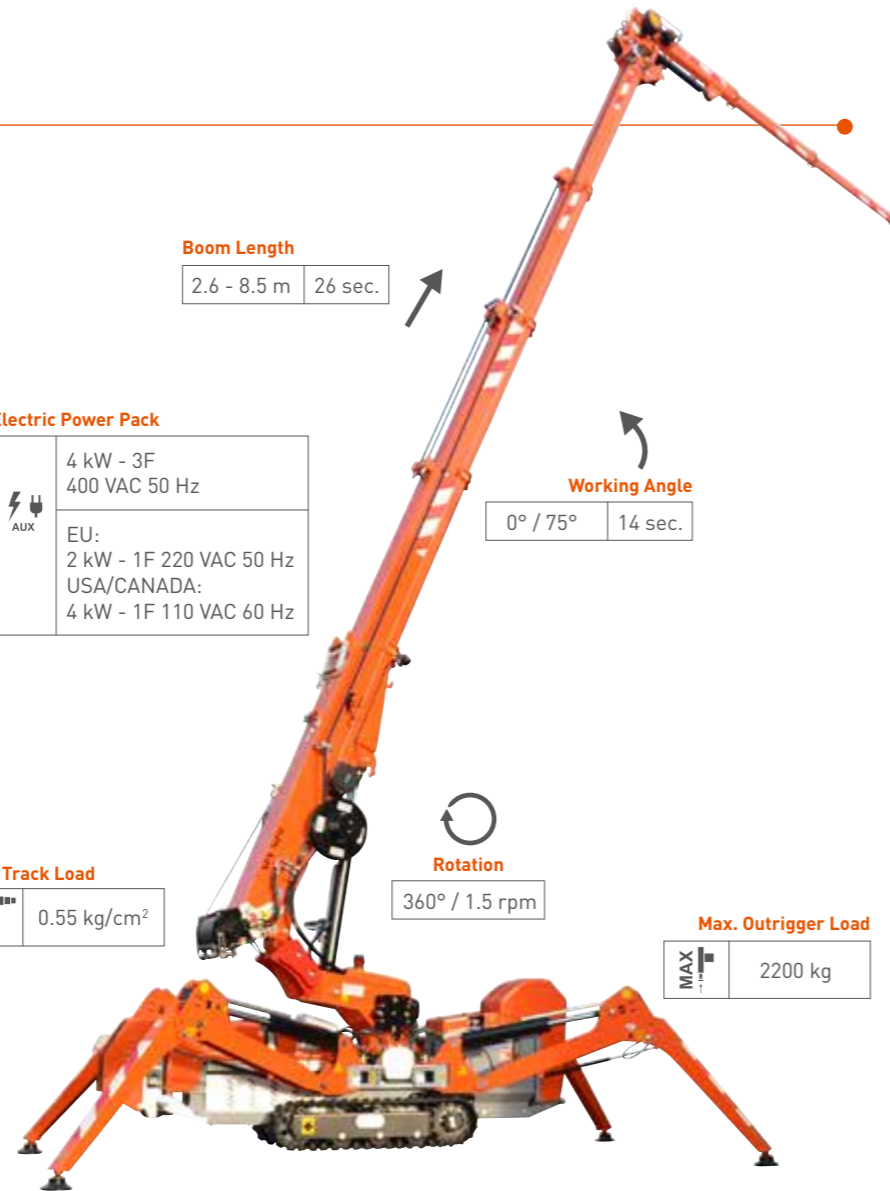
Technical Information

Dimension	L x W x H	3150 x 780 x 1950 mm
Stab Area		4150 x 4150 mm

Crane & Options Weights		Kg
	SPX424CDH	2030
	SPX424C+	2130
	/	200
	2.5T-D7	20
	PP400-4DX	45
	PP220-4DX	
	PP220-2DX	
	JIB800GX	20
	JIB800.1MX	80
	JIB800.2H1MX	180
	MV600.3E+	180
	MR800.4-6+4P	250

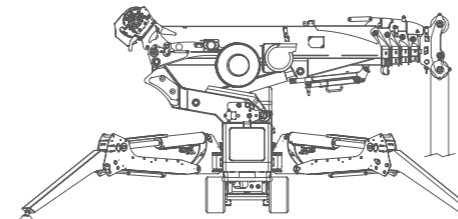
SPX424CDH	Petrol Engine	KUBOTA D722-E3B	14.9 kW 20 Hp
SPX424C+	Standard or Lithium Battery	N.4 BATTERIES 6V, 420Ah	4.0 kW 5.5 Hp

Speed		1.8 km/h (CDH) 0.72 km/h (C+)
Gradability		20°
Ext. Tracks		770-1065 mm



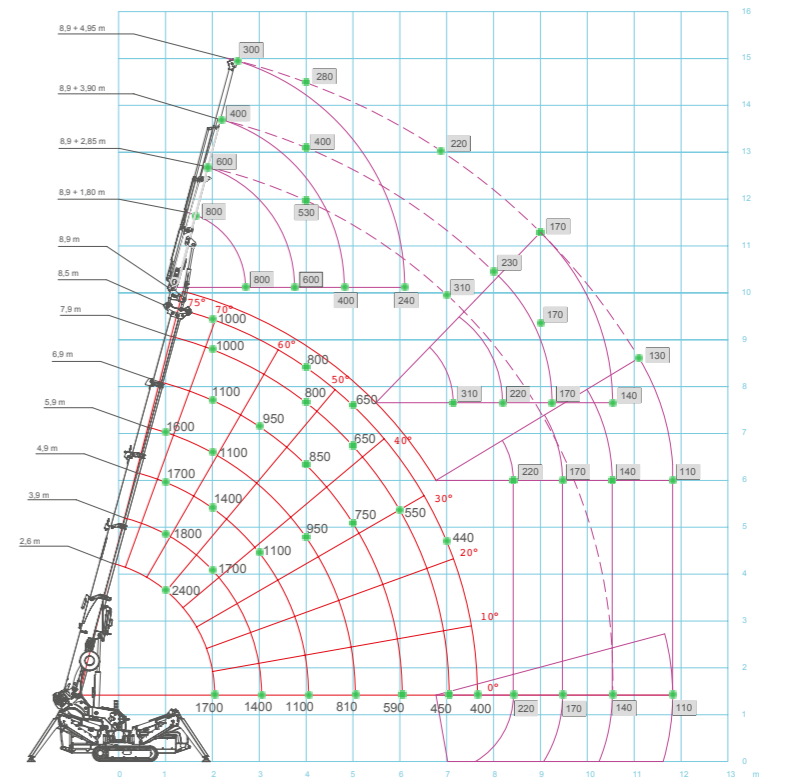
Winch & Fall Stages

	Main Winch	800 kg (Single line) 70 m - Ø 7 mm 26-31,8 m/min.
--	-------------------	---

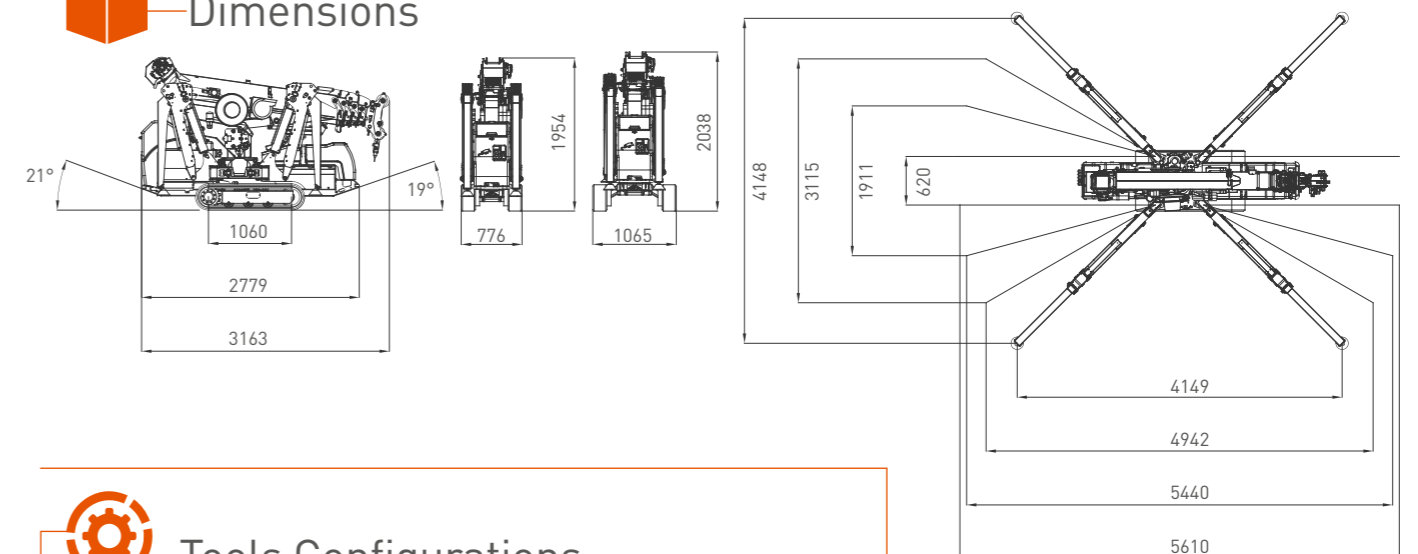


Max. Capacity	Line	Metres
2400 kg	3	-20 m
1600 kg	2	-32 m
800 kg	1	-65 m

Load Chart



Dimensions



Crane Options

Options:

- HA-SPX424
- VAI
- RC-SPX_B
- RC-SPX_C
- JIB800GX
- JIB800.2H1MX
- JIB800.1MX
- QC-MV600A
- QC-MR800D
- MV600.3E+
- MR800.4-6+4P
- PP400-4DX
- PP220-2DX
- PP220-4DX
- OM400
- WUK-02
- 2.5T-D7-D7
- EXT-209/312/424
- WT-2007242

Accessories: A2B, BPI, CCI, DTC, EXT, GSC, LMI, PaC, PPA, SCI, TH, VW, RCD, 2SW, 2ST

Tools Configurations

	JIB800GX	JIB800.1MX	JIB800.2H1MX	MV600.3E+	MR800.4-6+4P
max	800 kg	800 kg	800 kg	600 kg	800 kg
max	800 kg @ 10 m	500 kg @ 13 m	300 kg @ 15 m	600 kg @ 10,5 m	650 kg @ 10.5 m
max	300 kg @ 8.5 m	120 kg @ 11 m	110 kg @ 12 m	160 kg @ 8.5 m	200 kg @ 7 m



S Symbols

Extendable tracks Cingoli estensibili Ausdehbare Raupen Cingulos extensibles Chenilles extensibles	Electrical system Impianto elettrico Elektrische Anlage Sistema eléctrico Circuit électrique	Boom Slewing Rotazione braccio Auslegerdrehung Giro Rotation rallonge	Max reach Sbraccio massimo Max. Reichweite Alcance máximo Extension maximale du bras	Gradeability Pendenza superabile Steigfähigkeit Grado de inclinación Aptitude en pente	Main winch Argano principale Haupthubwerk Huinche principal Treville principal	Tilting angle Angolo di inclinazione Auslegerverstellwinkel Angulo de inclinación Angle flèche	Slewing Rotazione Drehwerk Rotación Rotation	Liquid cooling Raffreddamento liquido Flüssigkeitskühlung Enfriamiento del líquido Refrondissement liquide
Crane Gru Kran Grúa Grue	Auxiliary power pack Elettropompa ausiliaria Zusatzpumpe Electrobomba auxiliar Electropompe auxiliaire	Basket rotation Rotazione Cestello Korb-schwenkung Rotación carretilla Rotation nacelle	Max height Altezza massima Max. Höhe Altura máxima Hauteur maximale	Max outrigger load Stabilizzatori Abstützungen Estabilizadores Stabilisateurs	Jib - prolunga Auslegerverlängerung Jib prolongación Flèche	Rotation angle Angolo di rotazione Drehwinkel Angulo de rotación Angle de rotation	Building site use Utilizzo in cantiere Gebrauch auf Baustelle Utilización en el sitio Utilisation sur le site	Hookblock / Capacity Gancio / Capacità Hakenflasche / Traglast Gancho / Capacidad Crochet / Force de levage
Dimensions Dimensioni Abmessungen Dimensiones Dimensions	Man basket SWL Capacità cestello Korb-last Capacidad carretilla Capacité nacelle	Number of pads Numero di ventose Anzahl der Saugteller Número de ventosas Nombre de ventouses	Opened lifting beam Bilanciere aperto Geöffnet Traverse Balancine de carga abierto Balancier ouvert	Max track loading Pressione al suolo Bodendruck Presion de apoyo Pression au sol	Engine Motore Motor Moteur	Slewing angle Angolo di rotazione Schwenkwinkel Angulo de rotación Angle de rotation	Manipulator Manipolatore Manipulator Manipulateur	Unleaded petrol fuel Alimentazione benzina senza piombo Benzinversorgung, bleifrei Alimentación gasolina sin plomo Alimentacion essence sans plomb
Weight Peso Gewicht Peso total Poids	Max working height Massima altezza di lavoro Max. Arbeitshöhe Altura máxima Hauteur max. de travail	Pad diameter Diámetro ventosa Saugtellerdurchmesser Diámetro ventosa Diamètre ventouse	Closed lifting beam Bilanciere chiuso Geschlossen Traverse Balancine de carga cerrado Balancier fermé	Maximum SWL Portata massima Max. Tragfähigkeit Carga máxima Portée max.	Rope length Lunghezza fune Seillänge Longitud de la cuerda Longueur câble	Vertical lifting Sollevamento verticale Vertikaler Hub Elevación vertical Élévation verticale	Stabilization area Area di stabilizzazione Abstützung A'rea de estabilización Zone de stabilisation	
Counterweight Contrappeso Gegengewicht Contrapeso Contrepoids	Boom telescoping Lunghezza braccio Teleskopierlänge Brazo telescópico Télescopage flèche	Factory use Utilizzo in fabbrica Gebrauch in Werkhalle Utilización en la fábrica Utilisation dans l'usine	Diesel fuel Alimentazione Diesel Dieselversorgung Alimentación Diesel Alimentacion Diesel	Piston Pistone Kolben Pistón Piston	Power Potenza Leistung Potencia Puissance	Horizontal lifting Sollevamento orizzontale Horizontaler Hub Elevación horizontal Élévation horizontale	Air cooling Raffreddamento ad aria Luftkühlung Enfriamiento del aire Refrondissement air	

A Acronyms

A2B Anti Two Block	GSC Geometrical Stability Control	TH Tilting Head	BPI Boom Pressure Indicator	PPA Plug & Play Attachment	2SW Two Speed Winch	DTC Diagnostic Trouble Code	VW Virtual Wall
EXT Extendable Tracks	SCI Stability Control Indicator	2ST Two Speed Tracks	LMI Load Moment Indicator	RCD Radio Control Display	CCI Crane-Carrier Interlock	P&C Pick & Carry	

Notes: All specifications and features herein described can be changed without prior advice. All indicated data are indicative only and are not binding as crane performs differently depending on its use.

Note: Tutte le caratteristiche e le specifiche descritte possono essere soggette a variazioni senza preavviso. Tutti i dati riportati sono forniti a puro titolo informativo e non sono impegnativi dal momento che le prestazioni della macchina variano in funzione dell'utilizzo.

Hinweise: Unangekündigte Änderungen sämtlicher Eigenschaften und Daten sind möglich. Alle Angaben sind Richtwerte und nicht verbindlich da die Leistungen der Vorrichtung von deren Einsatz abhängen.

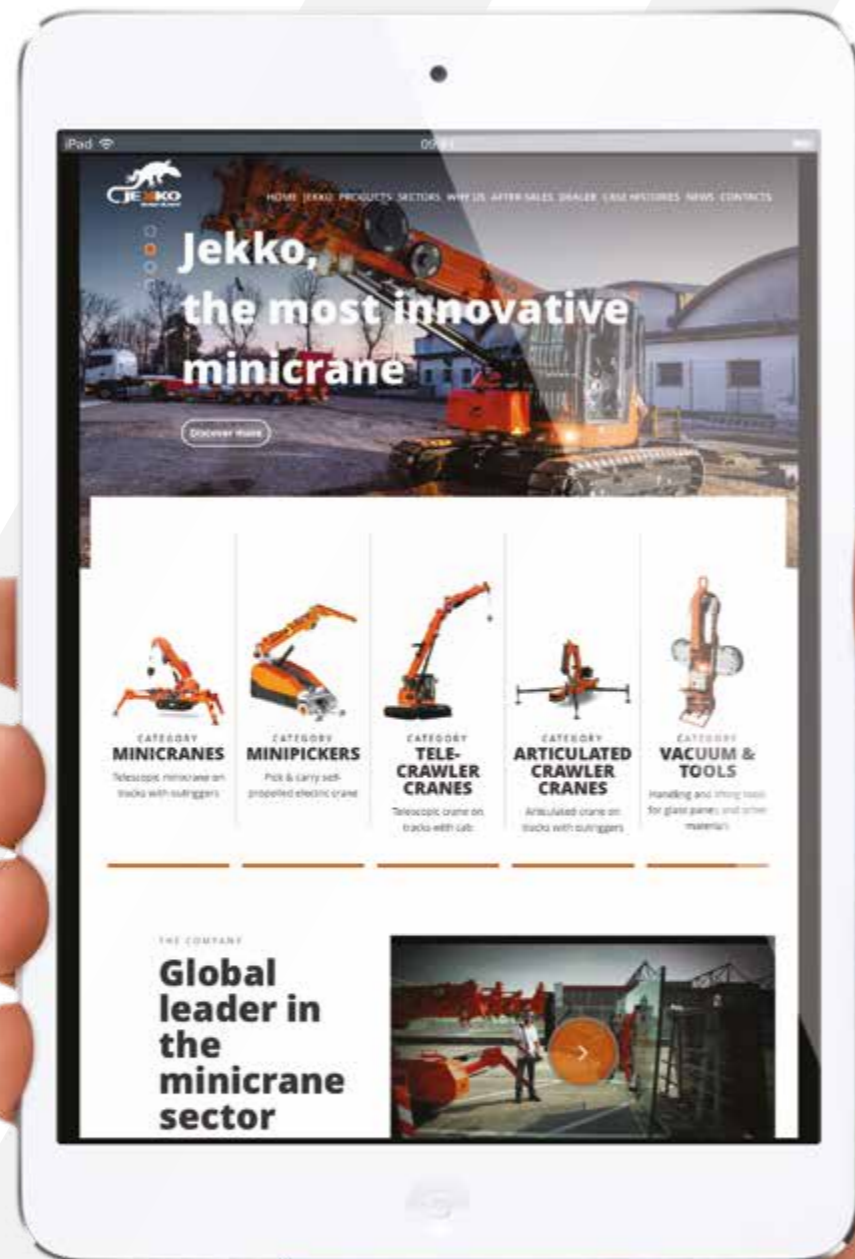
Notas: Todas las características y las especificaciones aquí indicadas pueden ser sujetas a variaciones sin aviso. Se dan todos los datos aquí indicados como simples informaciones. No se consideran como vinculantes, dado que las prestaciones del maquinario pueden variar.

Notes: Toutes les caractéristiques et le spécifications descriptives peut être sujet à variation sans préavis. Tout les données rapportés sont fourni à titre informatif et ne sont pas engager au moment que la prestation de la machine change en fonction de l'emploi.



www.jekko.it

Visit **jekko.it** to keep in contact with us, discover all the latest news and find out technical details of all our products.





Jekko srl

Via Campardone, 1 - 31014 Colle Umberto (TV) Italy
info@jekko.it - www.jekko.it