



Product Catalog

JF545 • JF30 • JF40

# The Company



**Jekko is a world leading manufacturer of minicranes with more than 45 years of experience in the lifting and handling sector.** The company is headquartered in the province of **Treviso**, occupying a **17,000 sq. m.** industrial estate – 7,000 of which are indoors. The entire range of **Jekko minicranes is exported and traded all over the world by a network of more than 30 authorised dealers.** Our products are engineered to meet our customers' specific requirements and are designed to **operate in narrow places where space is restricted.** Depending on the model, their **compact size** allows passage through a standard or double doorway. But their modest weight and slim dimensions come with no compromise to **lifting capacity or working range**, resulting in substantial

operational benefits both indoors and outdoors. Jekko offers a complete line of **models equipped with diesel engine, electric motor or battery pack** and a wide range of **attachments including hook or hydraulic jibs, grabber manipulators for pipes and beams, vacuum lifters for glass panes as well as lifting beams.** All tools are fully integrated with the functions and safety devices of the base machine. Jekko has always invested in **R&D**, safety and compliance with all relevant regulations – in particular with the **EN 13000** standard – to **offer its customers innovative and safe products.** Jekko is a young business, supported by a professional technical department, reliable training and **after-sales services**, and a sales & marketing office covering all international markets.



## PRODUCTS

Jekko minicranes are safe and technologically advanced; payback on a minicrane is immediate in the case of a sale and achieved in the short term in the case of rental.



## WORK TEAM

Jekko consists of a young and highly-qualified team whose innovative mindset and enthusiasm for continuing professional development are one of the company's flagship assets.



## MADE IN ITALY

From design to assembly, as well as components and suppliers, all our products are 100% Made in Italy.



## INTERNATIONAL NETWORK

Jekko is present in the five continents through its network of more than 30 authorised dealers.



## AFTER-SALES SERVICE

Jekko's prompt and reliable after-sales operation offers an online service for spares and warranty management and a training department for technical courses.



## INNOVATION

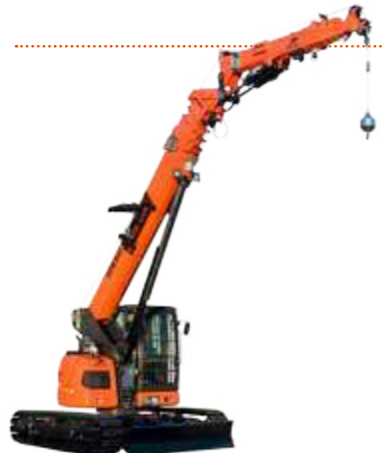
Jekko products take innovation to the limit, with exhaustive research and engineering and a thorough understanding of market needs.





## MINICRANES

Six different telescopic mini crawler crane models with outriggers – designed for easy transport and ultimate versatility. These machines can work in all kinds of places – slopes, stairs, passageways and hard-to-reach places – and they are quick to set up.



## TELE-CRAWLER CRANES

Jekko produces the only mini crawler crane on the market with an operator's cab and luffing capability thanks to its hydraulic articulated jib. It also has all the most advanced technological innovations that crane owners have come to expect: radio remote control, extendable tracks, option of diesel engine or electric motor, 3 T pick & carry capacity, hydraulic jib reaching 27.5 m and more than 50 configurations available.



## JF SERIES ARTICULATED CRAWLER CRANES

This model, combining an articulated truck-loader crane on a self-propelled crawler chassis, offers a glimpse of the future of crawler cranes.

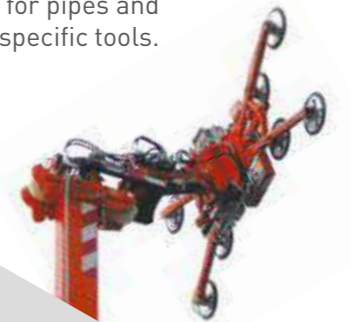
## MINIPICKERS

Minipickers are our pick & carry self-propelled electric cranes powered by a battery and radio-remote controlled. They are well suited to working in warehouses or where access is difficult for other cranes, especially where heavy loads need to be carried through doorways. Minipickers can also be used with Jekko hydraulic manipulators or vacuum lifters for handling and positioning glazing or curtain walling.



## VACUUM & TOOLS

Lifting and handling tools for glass panes and other materials. This family of products includes hydraulic or battery-powered manipulators, vacuum lifters for glass-pane handling, grabber manipulators for pipes and beams and other specific tools.



All our cranes are designed to operate in narrow places where space is restricted. Our ongoing R&D activity has brought these machines into many sectors of industry.

# Sectors of application



## Glass pane handling

Installation of glazing and curtain walling on buildings and skyscrapers, handling glass panes and non-porous materials using hydraulic manipulators and vacuum lifters integrated with our cranes.



## Constructions & Building

All kinds of building work, from housing to civil engineering.



## Mining, oil, nuclear, chemical, drilling and military sectors

These specific fields demand the highest standards in terms of accuracy, light-weight tools and handiness: that's exactly what Jekko minicranes offer.



## Industrial maintenance

Indoor and outdoor industrial maintenance: shopping malls, ships, museums, schools, hospitals, exhibition halls as well airports, sports grounds, roads, leisure parks, graveyards, houses, railways, etc...



## ... and others

With its entrepreneurial flair, Jekko has introduced the mini crane concept to all kinds of niche applications, including cinema, advertising, product promotion, airspace, luxury, etc...

# Our Strengths



## JF545 CRANE

- ✓ 6 hydraulic telescopic sections on the main boom
- ✓ Lifting Class: 53 tm / 518 kNm - HD5/S2
- ✓ Double hydraulic motor on the slew ring
- ✓ Double linkage on the boom articulations (max negative angle on the main boom 15°)
- ✓ Continuous rotation on slew ring
- ✓ LED floodlights on the main boom
- ✓ Oil fan cooler
- ✓ Mechanical, hydraulic and electric set up for winch installation
- ✓ Mechanical, hydraulic and electric set up for jib installation
- ✓ Hydraulic and electric set up for platform installation
- ✓ 360° continuous rotation
- ✓ ADC (Auto-Dynamic Control) system
- ✓ XP (Extra Power) system
- ✓ RAL2004

1

## HYDRAULIC JIB WITH PRO-LINK

- ✓ 6 hydraulic telescopic sections
- ✓ Max capacity @ max outreach: 600 kg @ 28.1 m
- ✓ Max capacity @ max height: 500 kg @ 30 m
- ✓ Linkage on the boom articulations with negative angle of 10°
- ✓ Hydraulic quick connections and electric plug
- ✓ 2 LED floodlights

2

## PROFESSIONAL RADIO REMOTE CONTROL

3

- ✓ 8 levers
- ✓ Proportional
- ✓ Multifunctions
- ✓ LCD color display
- ✓ To control:
  - Crane
  - Crawler tracks
  - Outriggers
  - Counterweight

UP TO 30 mt.



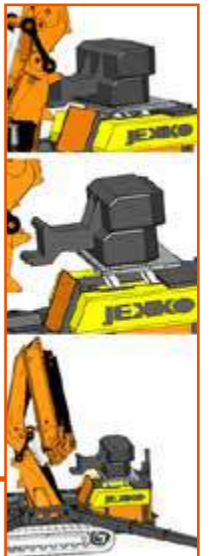
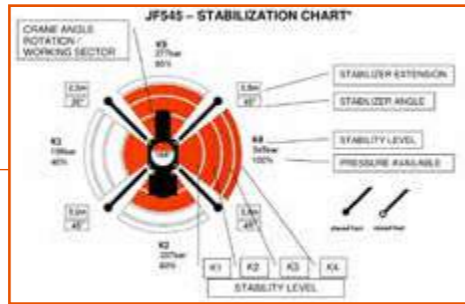
# Our Strengths



## STABILITY SYSTEM AND SUB-FRAME

- ✓ 4 outriggers with hydraulic extension and rotation (0-45°) fully radio remote controlled
- ✓ Automatic and variable geometrical stability control with five stability levels
- ✓ Adjustable outrigger position system (+/- 125 mm)
- ✓ High resistance sub-frame

4



## COUNTERWEIGHT SYSTEM + 3-TONNE LOAD BED WITH ANCHOR POINTS

- ✓ Automatic counterweight dismantling system
- ✓ Fully remote controlled system
- ✓ Quick connection system with 2 safety pins
- ✓ 3-tonne max capacity without counterweight

7



5

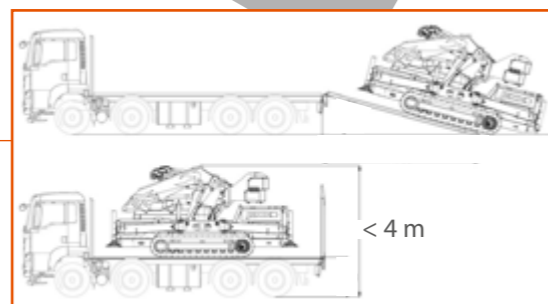
## ENGINE & HYDRAULIC SYSTEM

- ✓ Diesel KUBOTA engine 55.4Kw/74.3Hp
- ✓ Hydraulic Piston pump with variable displacement
- ✓ Load sensing hydraulic system
- ✓ Water and Oil cooler

6

## TRANSPORTABILITY

- ✓ Maximum slope of 30%
- ✓ Low loader or lorry
- ✓ No special transport required



8

## HYDRAULIC WINCH

- ✓ 2-tonne max capacity on single line
- ✓ Pulley kit for working with main boom
- ✓ Pulley kit for working with jib
- ✓ Pulley block for working with 2 or 3 falls

## OTHER COMPONENTS

- ✓ Jemmy software
- ✓ Steel crawlers with two hydraulic engines (with option of non-marking white tracks)
- ✓ Two speed tracks
- ✓ 2 tool boxes with keys
- ✓ Front and rear LED floodlights
- ✓ Front and rear hydraulic outlet with quick connectors hydraulic outlet

9



# Configurations & Options



## AUXILIARY ELECTRIC MOTOR

- ✓ Three-phase 380V-Ac 13Kw
- ✓ 400V electric plug 32 A
- ✓ Hydraulic piston pump with variable displacement
- ✓ Electric switch selector on the dashboard



## TWO-PERSON BASKET OR HYDRAULIC PLATFORM

- ✓ RAL2004 painted steel structure
- ✓ 200 kg capacity
- ✓ Quick connection on the hydraulic jib
- ✓ Remote control tray with emergency button
- ✓ Max working height 31.5 m
- ✓ Emergency hand pump
- ✓ CE certified



## NON-MARKING WHITE TRACKS

- ✓ High resistance white plastic pads
- ✓ Fixing system with 4 bolts



# JF30



## KEY FEATURES

**LIFTING CAPACITY**  
Up to 995 kg

**MAX HEIGHT**  
Up to 8 m

**MAX OUTREACH**  
Up to 6.8 m

### CHARACTERISTICS

- ✓ Walvoil monobloc distributor bank. Immediate stop device and pressure gauge
- ✓ Rotation with hydraulic motor and pinion mechanically limited to 325°
- ✓ Lift limiter on the winch
- ✓ Driver's footboard
- ✓ Adjustable outrigger positions
- ✓ Petrol engine 7.6 kW



## CONFIGURATIONS & OPTIONS

Winch 600 kg, 36 m



Radio Remote Control



Electric Power Pack



2 Manual Extensions available



# JF40

## KEY FEATURES

**LIFTING CAPACITY**  
Up to 2500 kg

**MAX HEIGHT**  
Up to 8.1 m

**MAX OUTREACH**  
Up to 6.8 m

### CHARACTERISTICS

- ✓ Walvoil monobloc distributor bank. Immediate stop device and pressure gauge
- ✓ Rotation with hydraulic motor and pinion mechanically limited to 337°
- ✓ Load moment limiter
- ✓ Crane with linkage
- ✓ Driver's footboard
- ✓ Adjustable outrigger positions
- ✓ Petrol engine 7.6 kW



## CONFIGURATIONS & OPTIONS



Radio Remote Control



Electric Power Pack



Winch 600 kg, 36 m



Manual Extension





JF545 • JF30 • JF40





# JF545

max 15500 kg

5450 x 1840 x 2750 mm

max 30 m with jib

max 28 m with jib

This model combines an articulated truck loader crane with a self-propelled crawler chassis. It offers a glimpse into the future of crawler cranes.



## Technical Information

Dimension	L x W x H	5450 x 1840 x 2750 mm
Stab Area		6700 x 6700 mm

Crane & Options Weights		Kg
JF545		13700
/		3500
JIBL426		1200
BASKET		200

Winch		2600 kg
		36 m - Ø 6 mm
		36.5-47 m/min.

JF545	Diesel Engine	KUBOTA V3307-DI-T-E3B	55.4 kW 74 Hp
-------	---------------	-----------------------	------------------

Speed		2.5 km/h
-------	--	----------

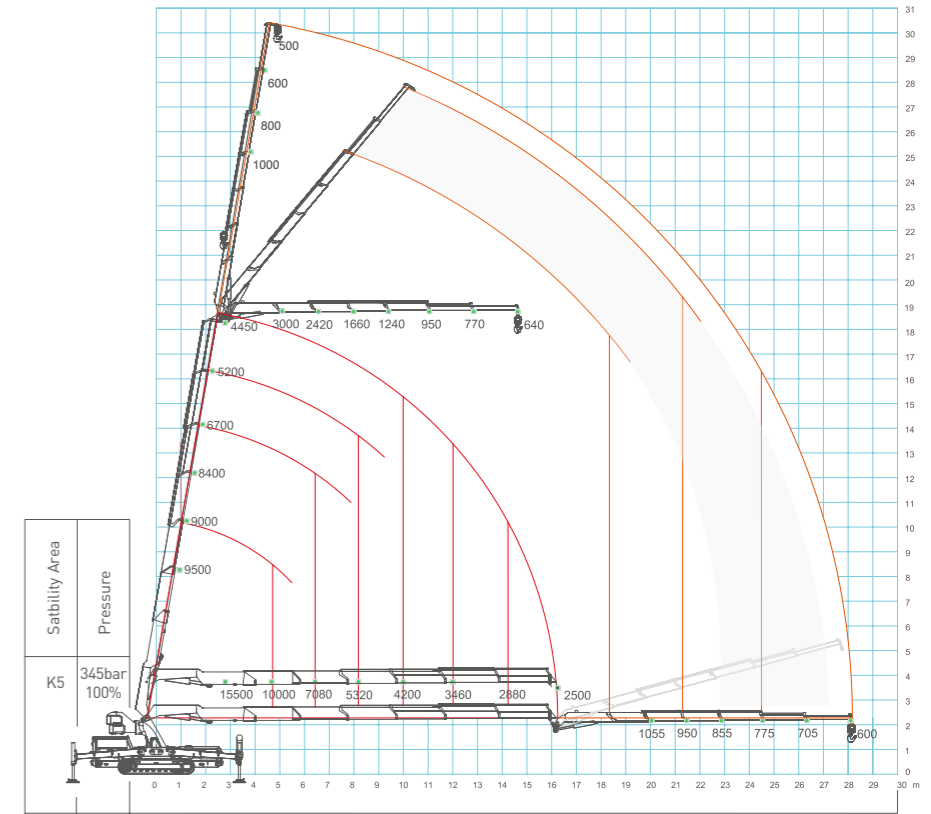
Gradeability		30°
--------------	--	-----



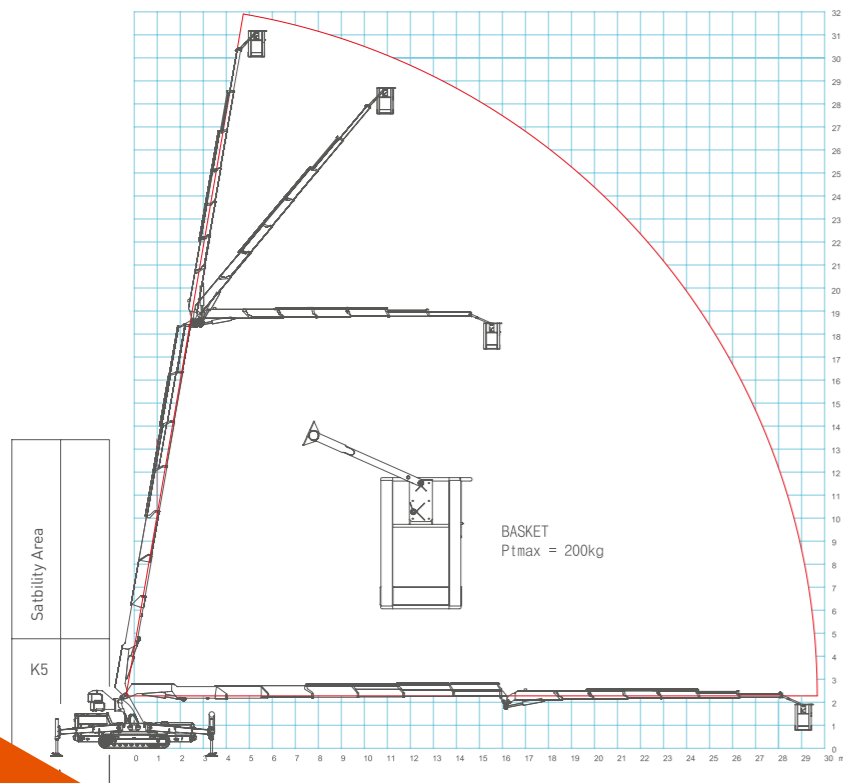
## Crane Options



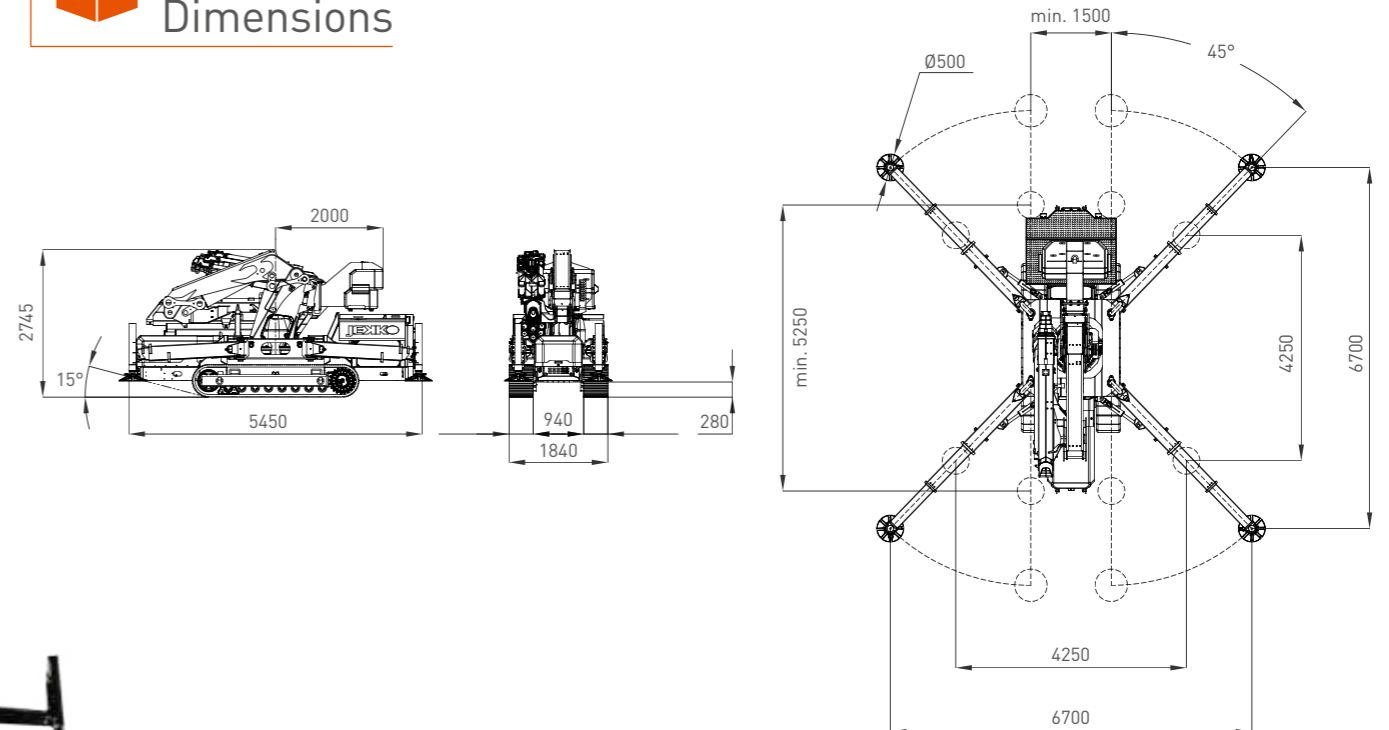
## Load Chart



## Basket Load Chart



## Dimensions



# JF30

max 995 kg (CE)

2540 x 780 x 1830 mm

max 8 m

max 6.8 m

## Technical Information

## Load Chart

Dimension	L x W x H	2540 x 780 x 1830 mm
Stab Area		3370 X 3370 mm

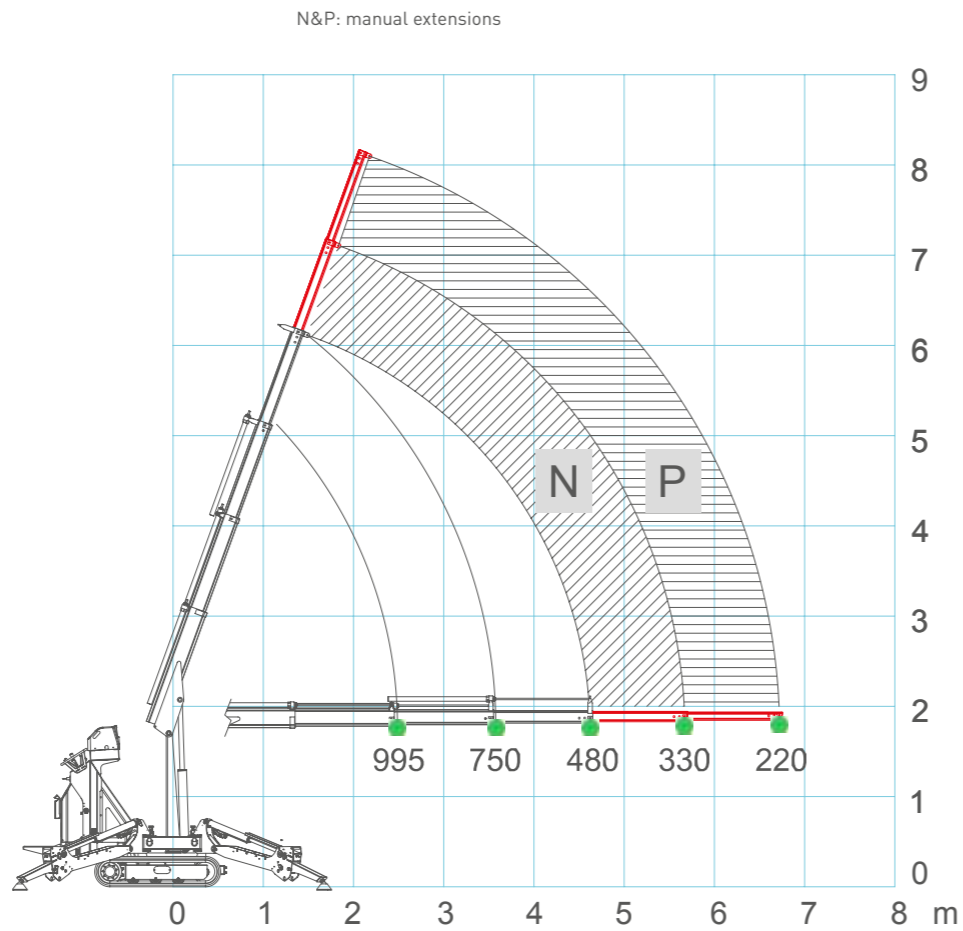
Crane & Options Weights		Kg
JF30		1400
/		
TF0500		12
AUX	PP400-4DX PP220-4DX PP220-2DX	45
	JIB N	13
	JIB P	10

Winch	500 kg 36 m - Ø 6 mm 27-35 m/min.
-------	---

JF30	Petrol Engine	YAMAHA MZ 360	7.6 kW 10.4 Hp
------	---------------	---------------	-------------------

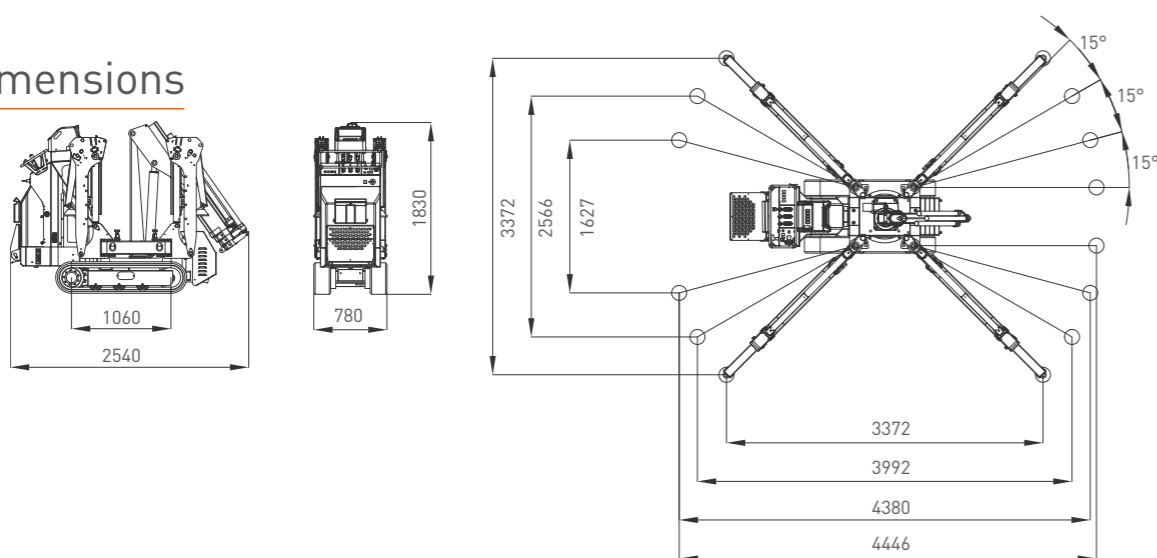
Speed	2.4 km/h
-------	----------

Gradeability	20°
--------------	-----



Electric Power Pack	Max. Track Load	Max. Outrigger Load	Boom Length	Working Angle	Rotation
AUX 2kW - 2.7 Hp 220 V-AC	0.32 kg/cm <sup>2</sup>	MAX 1050 kg	1.5 - 4.7 m 30 sec.	0° / 70° 25 sec.	325° / 1.0 rpm

## Dimensions



# JF40

max 2500 kg

2490 x 780 x 1850 mm

max 8.1m

max 6.8 m



## Technical Information

## Load Chart

Dimension	L x W x H	2490 x 780 x 1850 mm
Stab Area		4000 X 4000 mm

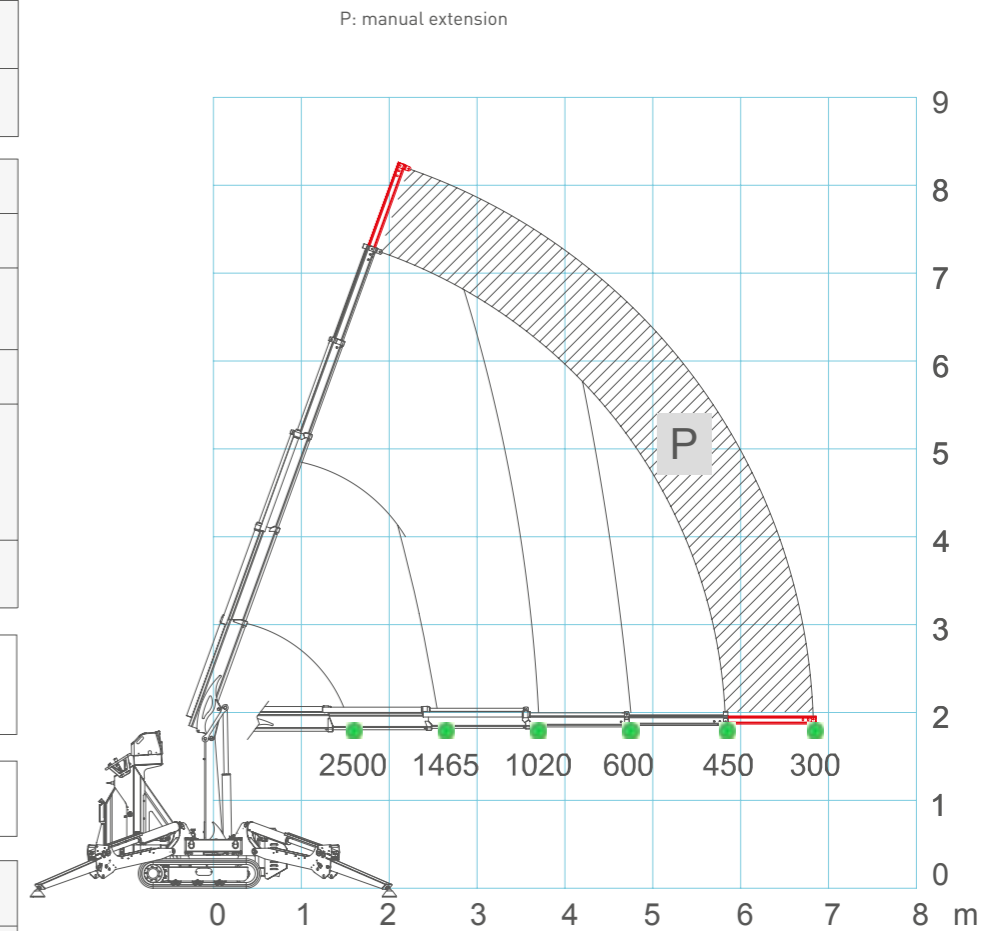
Crane & Options Weights		Kg
JF40		1600
/		
TF0500		12
AUX	PP400-4DX PP220-4DX PP220-2DX	45
	JIB P	9

Winch	500 kg 36 m - Ø 6 mm 27-33 m/min.
-------	---

JF40	Petrol Engine	YAMAHA MZ 360	7.6 kW 10.4 Hp
------	---------------	---------------	-------------------

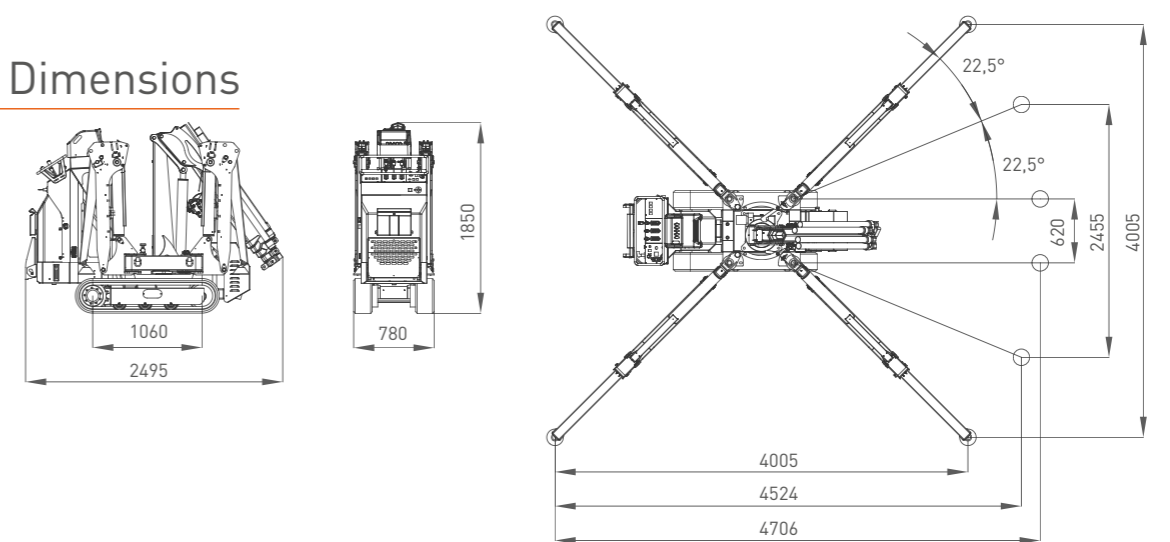
Speed	2.4 km/h
-------	----------

Gradeability	20°
--------------	-----



Electric Power Pack	Max. Track Load	Max. Outrigger Load	Boom Length	Working Angle	Rotation
AUX 2kW - 2.7 Hp 220 V-AC	0.35 kg/cm <sup>2</sup>	MAX 1300 kg	1.6 - 5.8 m 30 sec.	0° / 70° 25 sec.	337° / 1.0 rpm

## Dimensions





## S Symbols

	Extendable tracks Cingoli estensibili Ausdehbare Raupen Cingulos extensibles Chenilles extensibles		Electrical system Impianto elettrico Elektrische Anlage Sistema eléctrico Circuit électrique		Boom Slewing Rotazione braccio Auslegerdrehung Giro Rotation rallonge		Max reach Sbraccio massimo Max. Reichweite Alcance máximo Extension maximale du bras		Gradeability Pendenza superabile Steigfähigkeit Grado de inclinación Aptitude en pente		Main winch Argano principale Haupthubwerk Huicne principal Trevil principal		Tilting angle Angolo di inclinazione Auslegerverstellwinkel Angulo de inclinación Angle flèche		Slewing Rotazione Drehwerk Rotación Rotation		Liquid cooling Raffreddamento liquido Flüssigkeitskühlung Enfriamiento del líquido Refrondissement liquide
	Crane Gru Kran Grua Grue		Auxiliary power pack Elettropompa ausiliaria Zusatzpumpe Electrobomba auxiliar Électropompe auxiliaire		Basket rotation Rotazione Cestello Korb-schwenkung Rotación carretilla Rotation nacelle		Max height Altezza massima Max. Höhe Altura máxima Hauteur maximale		Max outrigger load Stabilizzatori Abstützungen Estabilizadores Stabilisateurs		Jib - prolunga Auslegerverlängerung Jib prolongación Flèche		Rotation angle Angolo di rotazione Drehwinkel Angulo de rotación Angle de rotation		Building site use Utilizzo in cantiere Gebrauch auf Baustelle Utilización en el sitio Utilisation sur le site		Hookblock / Capacity Gancio / Capacità Hakenflasche / Traglast Gancho / Capacidad Crochet / Force de levage
	Dimensions Dimensioni Abmessungen Dimensiones Dimensions		Man basket SWL Capacità cestello Korb-last Capacidad carretilla Capacité nacelle		Number of pads Numero di ventose Anzahl der Saugteller Número de ventosas Nombre de ventouses		Opened lifting beam Bilanciere aperto Geöffnet Traverse Balancine de carga abierto Balancier ouvert		Max track loading Pressione al suolo Bodendruck Presion de apoyo Pression au sol		Engine Motore Motor Moteur		Slewing angle Angolo di rotazione Schwenkwinkel Angulo de rotación Angle de rotation		Manipulator Manipolatore Manipulator Manipulateur		Unleaded petrol fuel Alimentazione benzina senza piombo Benzinversorgung, bleifrei Alimentación gasolina sin plomo Alimentacion essence sans plomb
	Weight Peso Gewicht Peso total Poids		Max working height Massima altezza di lavoro Max. Arbeitshöhe Altura máxima Hauteur max. de travail		Pad diameter Diámetro ventosa Saugtellerdurchmesser Diámetro ventosa Diamètre ventouse		Closed lifting beam Bilanciere chiuso Geschlossen Traverse Balancine de carga cerrado Balancier fermé		Maximum SWL Portata massima Max. Tragfähigkeit Carga máxima Portée max.		Rope length Lunghezza fune Seillänge Longitud de la cuerda Longueur câble		Vertical lifting Sollevamento verticale Vertikaler Hub Elevación vertical Élévation verticale		Stabilization area Area di stabilizzazione Abstützung A'rea de estabilización Zone de stabilisation		
	Counterweight Contrappeso Gegengewicht Contrapeso Contrepoids		Maxworking radius Massimo raggio di lavoro Max. Reichweite Rayo máximo de trabajo Rayon max. de travail		Factory use Utilizzo in fabbrica Gebrauch in Werkhalle Utilización en la fábrica Utilisation dans l'usine		Diesel fuel Alimentazione Diesel Dieselversorgung Alimentación Diesel Alimentacion Diesel		Piston Pistone Kolben Pistón Piston		Power Potenza Leistung Potencia Puissance		Horizontal lifting Sollevamento orizzontale Horizontaler Hub Elevación horizontal Élévation horizontale		Air cooling Raffreddamento ad aria Luftkühlung Enfriamiento del aire Refrondissement air		

## A Acronyms

<b>A2B</b> Anti Two Block	<b>GSC</b> Geometrical Stability Control	<b>TH</b> Tilting Head	<b>BPI</b> Boom Pressure Indicator	<b>PPA</b> Plug & Play Attachment	<b>2SW</b> Two Speed Winch	<b>DTC</b> Diagnostic Trouble Code	<b>VW</b> Virtual Wall
<b>EXT</b> Extendable Tracks	<b>SCI</b> Stability Control Indicator	<b>2ST</b> Two Speed Tracks	<b>LMI</b> Load Moment Indicator	<b>RCD</b> Radio Control Display	<b>CCI</b> Crane-Carrier Interlock	<b>P&amp;C</b> Pick & Carry	

Notes: All specifications and features herein described can be changed without prior advice. All indicated data are indicative only and are not binding as crane performs differently depending on its use.

Note: Tutte le caratteristiche e le specifiche descritte possono essere soggette a variazioni senza preavviso. Tutti i dati riportati sono forniti a puro titolo informativo e non sono impegnativi dal momento che le prestazioni della macchina variano in funzione dell'utilizzo.

Hinweise: Unangekündigte Änderungen sämtlicher Eigenschaften und Daten sind möglich. Alle Angaben sind Richtwerte und nicht verbindlich da die Leistungen der Vorrichtung von deren Einsatz abhängen.

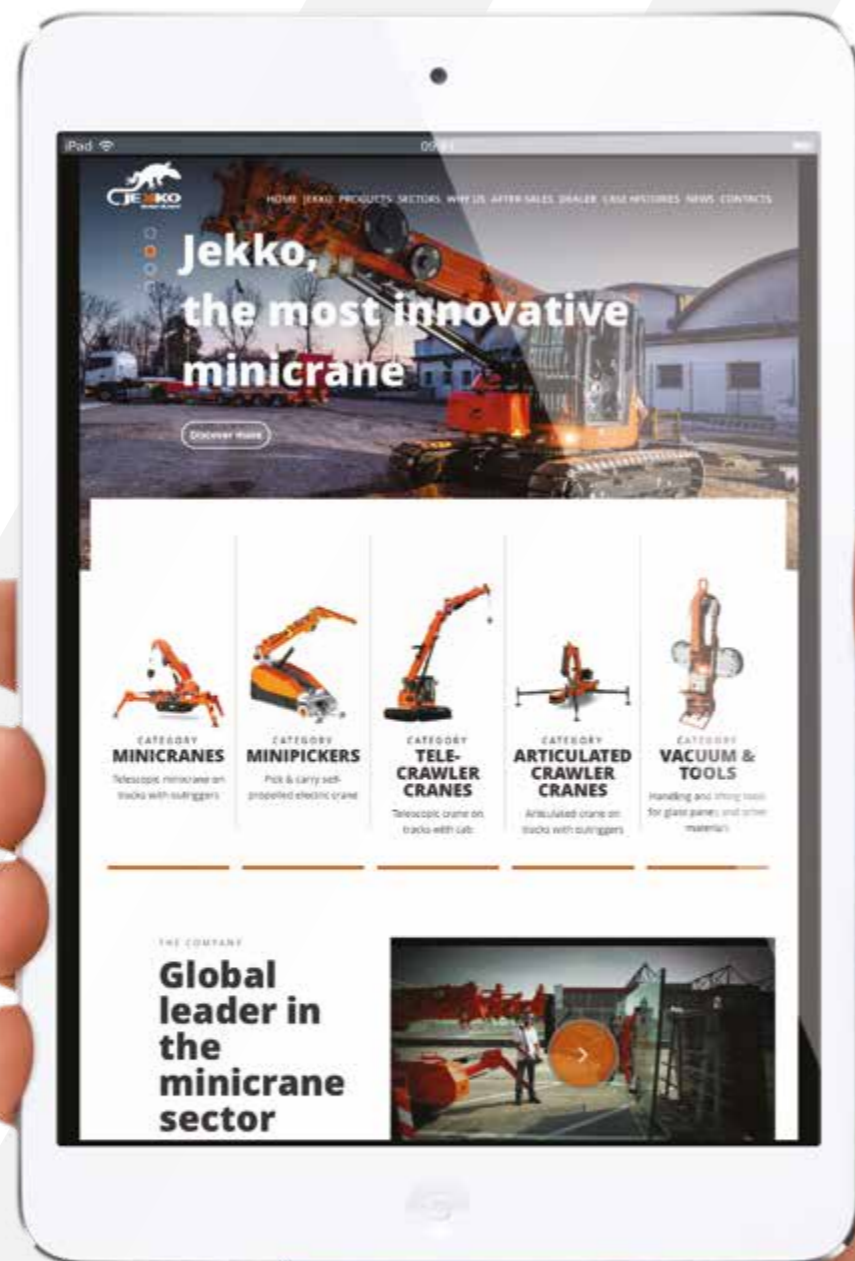
Notas: Todas las características y las especificaciones aquí indicadas pueden ser sujetas a variaciones sin aviso. Se dan todos los datos aquí indicados como simples informaciones. No se consideran como vinculantes, dado que las prestaciones del maquinario pueden variar.

Notes: Toutes les caractéristiques et le spécifications descriptives peut être sujet à variation sans préavis. Tout les données rapportés sont fourni à titre informatif et ne sont pas engager au moment que la prestation de la machine change en fonction de l'emploi.



www.jekko.it

Visit **jekko.it** to keep in contact with us, discover all the latest news and find out technical details of all our products.





**Jekko srl**

Via Campardone, 1 - 31014 Colle Umberto (TV) Italy  
info@jekko.it - www.jekko.it